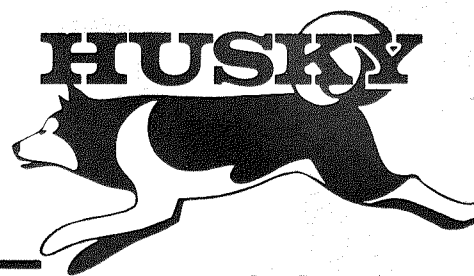


# BOLENS

---



TRACTOR  
MODELS 1886S-05  
1886S-06  
(HT-18)

## ILLUSTRATED PARTS CATALOG

**BOLENS**

PORT WASHINGTON, WISCONSIN, U.S.A.  
PRINTED IN U.S.A.

FORM NO. P-552516  
PRINTED AT BOLENS

# TRACTOR ASSEMBLY MODEL 1886S-05 AND -06

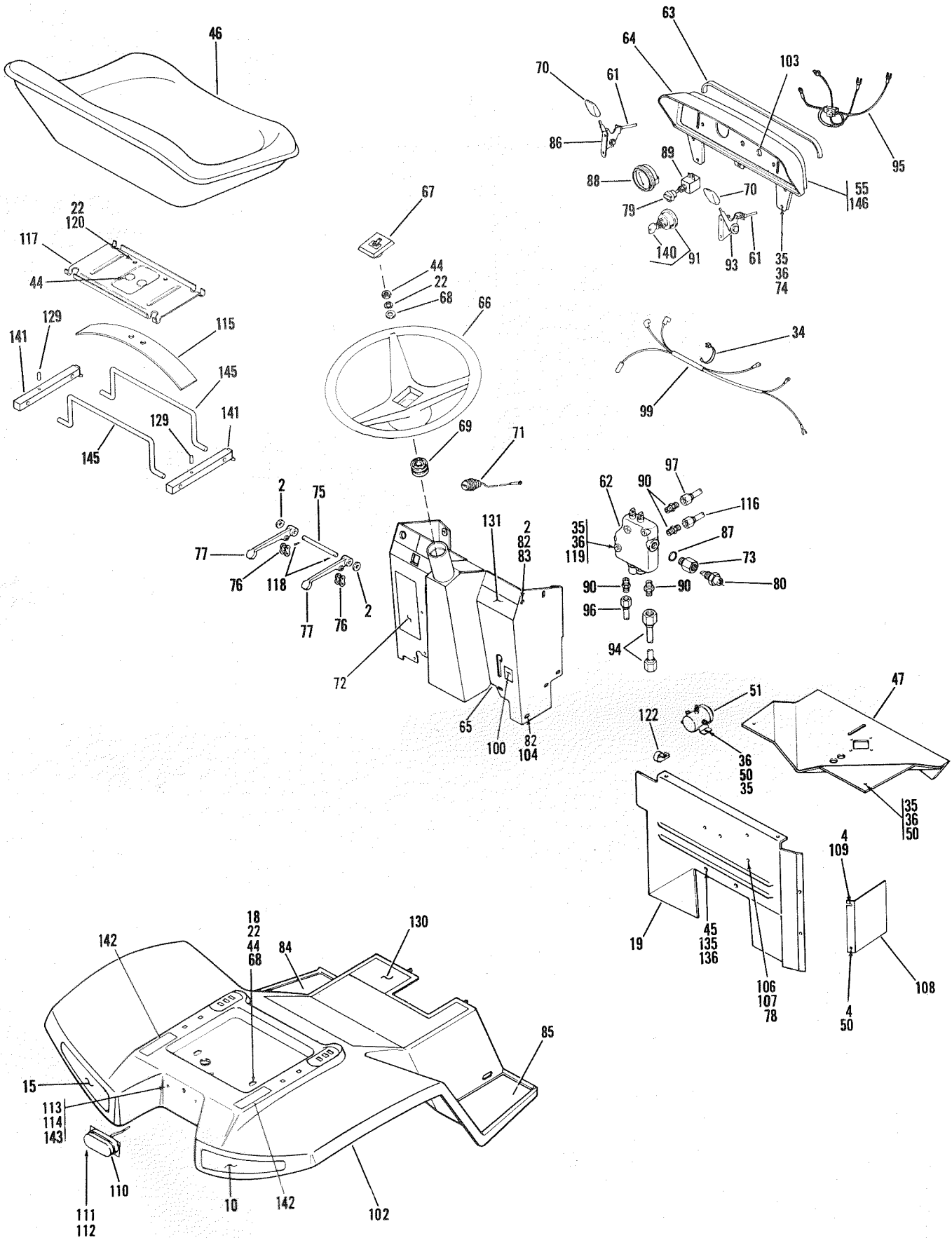


FIGURE 1

# TRACTOR ASSEMBLY MODEL 1886S-05 AND -06

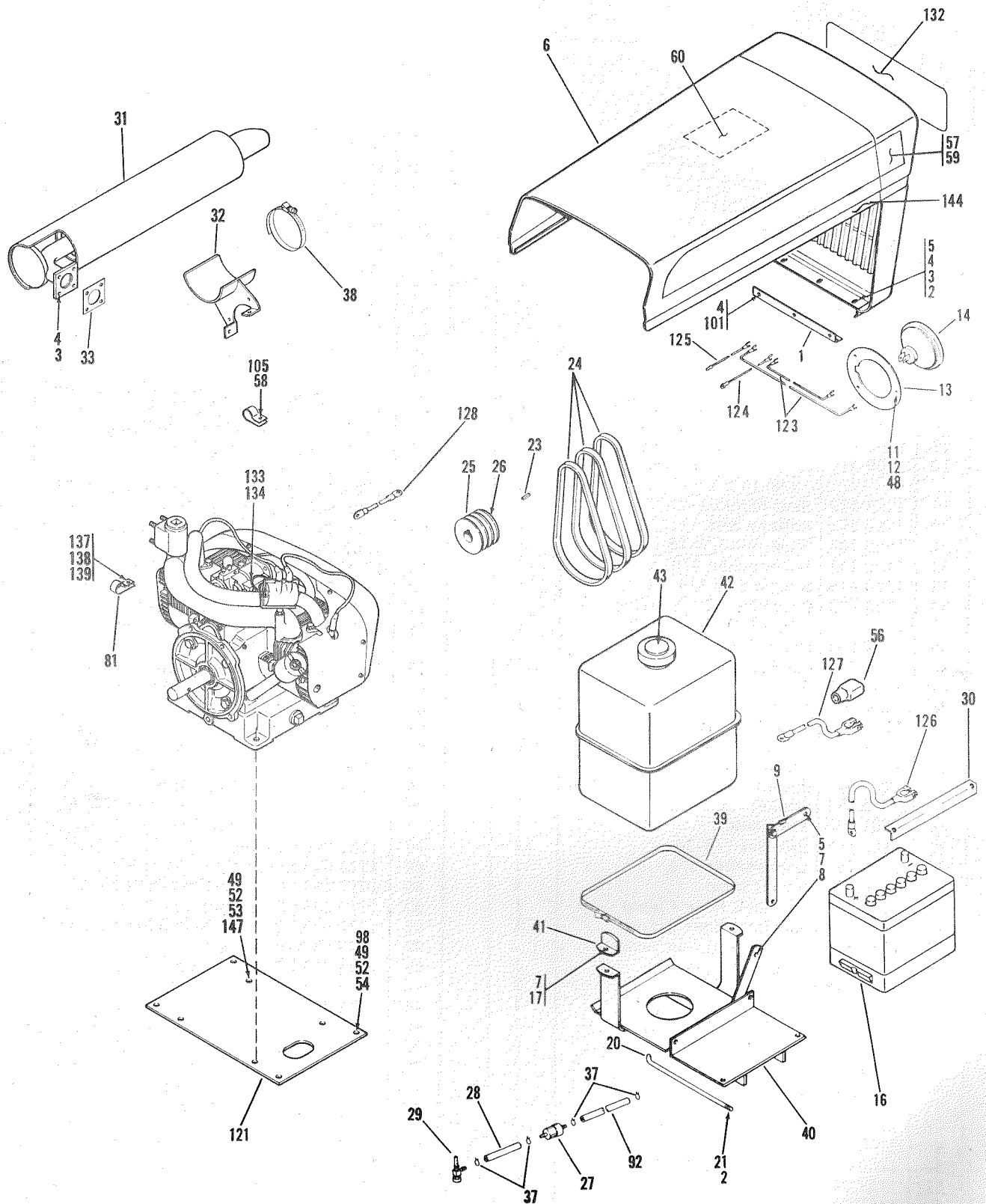


FIGURE 1

# TRACTOR ASSEMBLY MODEL 1886S-05 AND -06

## PARTS LIST FOR FIGURE 1

Ref. No.	Part No.	Description	No. Req'd
1	1717 246	Hinge	1
2	1107 382	Flat Washer 5/16	13
3	1182 563	Hex Nut 5/16-18	7
4	1100 242	Lockwasher 5/16	12
5	1106 872	Capscrew 5/16-18 x 5/8	5
6	1722 558	Grille and Hood w/o Decals	1
7	1110 107	Lock Nut 5/16-18	4
8	1705 905	Bowed Washer	2
9	1718 500	Hood Stop Assembly	1
10	1722 678	Decal - Rear R. H. (Reflective) (Mod-05)	1
11	1185 911	Rivet	6
12	1185 746	Spring Clip	6
13	1719 708	Retainer Ring	2
14	*	Headlight Bulb Mfg. No. 4406	2
15	1722 677	Decal - Rear L. H. (Reflective) (Mod-05)	1
16	1718 027	Battery 12V - 45 Amp	1
17	1106 878	Capscrew 5/16-18 x 1	2
18	1106 919	Screw - Hex Hd Cap 3/8-16 x 1	2
19	1723 529	Heat Shield Assembly	1
20	1724 361	Battery Rod	2
21	1806 192	Wing Nut 3/8-16	2
22	1100 243	Lockwasher 3/8	7
23	1108 844	Square Key 1/4 - 1-1/4	1
24	1722 639	Drive Belt 3" (Matched Set of 3)	1
25	1722 662	Drive Sheave	1
26	1103 470	Set Screw 5/16-18 x 1/2	2
27	1723 521	Filter	1
28	1724 708	Fuel Line	1
29	1723 518	Shut Off Valve	1
30	1724 360	Clamp - Angle	1
31	1722 529	Exhaust Muffler	1
32	1722 533	Support Assembly - Muffler	1
33	1722 530	Gasket - Exhaust	1
34	1805 345	Tie Cable	1
35	1121 507	Hex Nut 1/4-20	11
36	1100 241	Lockwasher 1/4	11
37	1718 185	Hose Clamp	4
38	1723 599	Snaplock Hose Clamp	1
39	1806 811	Snaplock Hose Clamp	1
40	1722 681	Battery and Gas Tank Support	1
41	1718 543	Gas Tank Clip	2
42	1718 600	Gas Tank (Inc #43)	1
43	1718 756	Gas Tank Cap Only	1
44	1121 509	Hex Nut 3/8-16	5
45	1100 244	Lockwasher	2
46	1722 474	Seat	1
47	1722 766	Heat Shield Top	1
48	1185 748	Wave Washer	6
49	1100 245	Lockwasher 1/2	12
50	1106 830	Capscrew 1/4-20 x 1/2	5
51	1717 048	Solenoid	1
52	1121 511	Hex Nut 1/2-13	8
53	1100 065	Screw - Hex Hd Cap 1/2-13 x 1-1/2	4
54	1106 987	Screw - Hex Hd Cap 1/2-13 x 1-1/4	4
55	1116 287	Screw	4
56	1721 413	Terminal Boot - Battery	1

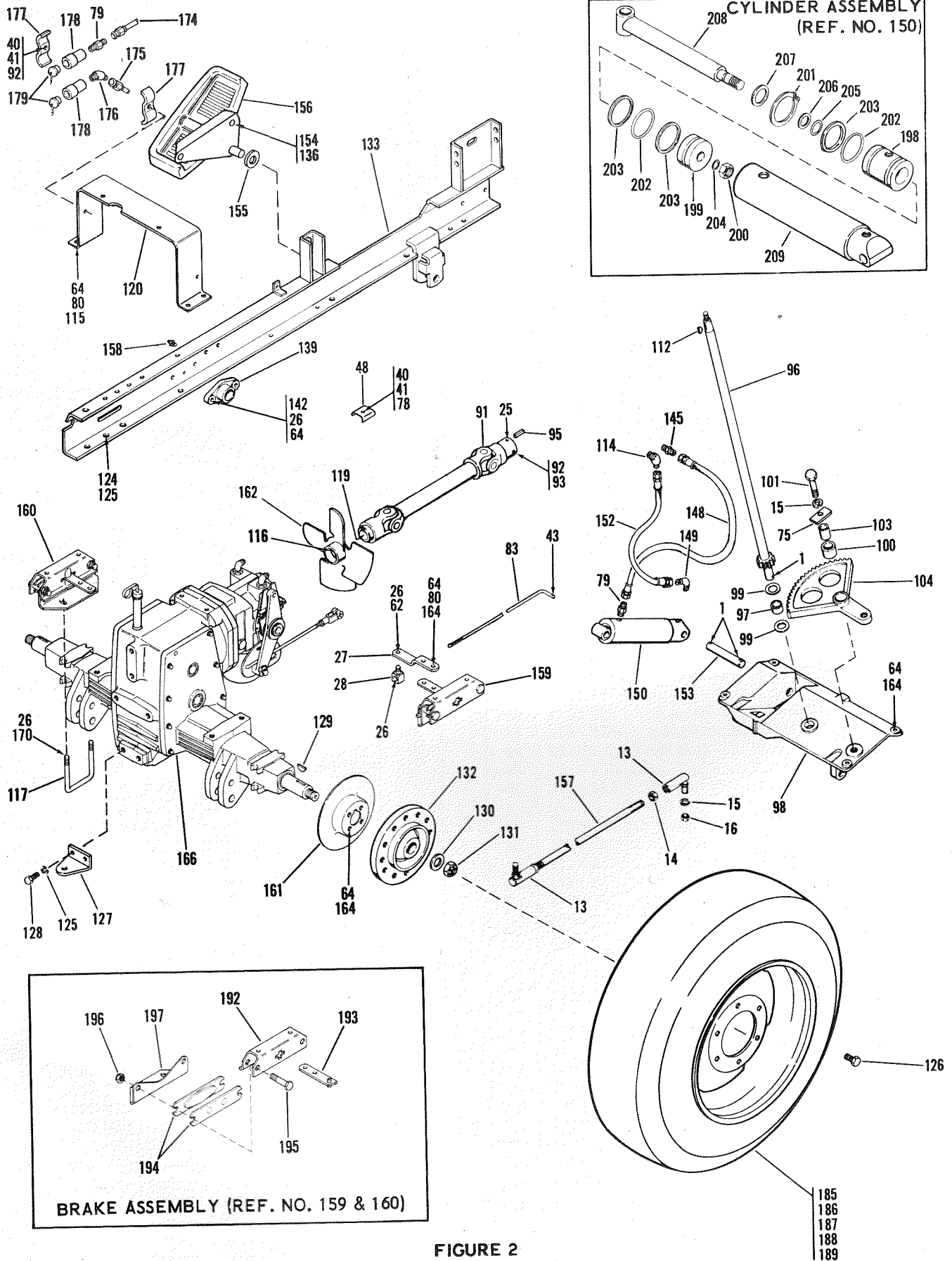
Ref. No.	Part No.	Description	No. Req'd
57	1722 767	Decal - Hood R. H. (Mod-05)	1
	1725 499	Decal - Hood R. H. (Mod-06)	1
58	1185 869	Kep's Lock 8-32	2
53	1722 768	Decal - Hood L. H. (Mod-05)	1
	1725 500	Decal - Hood L. H. (Mod-06)	1
60	1724 543	Decal - Instruction (Mod-05)	1
	1725 504	Decal - Instruction (Mod-06)	1
61	1706 590	Wire Only	2
62	1722 528	Control Valve Assembly - 2 Spool	1
	1723 215	Repair Kit for Ref. No. 62	1
63	1717 599	Rubber Pad	1
64	1723 391	Instrument Panel	1
65	1724 532	Steering Column	1
66	1721 805	Steering Wheel	1
67	1722 750	Steering Wheel Cap (Mod-05)	1
	1725 510	Steering Wheel Cap (Mod-06)	1
68	1107 383	Flat Washer 3/8	3
69	1720 134	Self Aligning Bearing	1
70	1715 312	Knob Only	2
71	1724 405	Panel Lamp	1
72	1724 544	Decal - Hydraulic (Mod-05)	1
	1725 509	Decal - Hydraulic (Mod-06)	1
73	1724 358	Plug - Adapter	1
74	1107 381	Flat Washer 1/2	4
75	1722 546	Rod - Control Valve	1
76	1185 018	Link - Connector 5/8 P.	2
77	1722 539	Lever - Control Valve	2
78	1100 117	Mach. Screw Rd Hd #10-24 x 1-1/2	2
79	1718 231	Light Switch Knob Only	1
80	1724 584	Temperature Switch	1
81	1724 489	Clip	3
82	1106 870	Capscrew 5/16-18 x 1/2	4
83	1185 725	Centerlock Nut 5/16-18	2
84	1719 182	Foot Pad - L. H.	1
85	1719 183	Foot Pad - R. H.	1
86	1723 312	Choke Control (Inc No. 61 and 70)	1
87	1185 773	O-Ring	1
88	1718 039	Ammeter	1
89	1717 256	Light Switch (Inc Ref. 79)	1
90	1717 563	Connector	4
91	1721 409	Ignition Switch (Inc Ref. 140)	1
92	1724 728	Fuel Line	1
93	1723 313	Throttle Control (Inc Ref. 61 and 70)	1
94	1724 347	Tube Assembly - Return	1
95	1722 735	Wiring Harness (See Fig. 4)	1
96	1724 346	Tube Assembly - Pressure	1
97	1722 700	Tube Assembly - (Control Valve to Tee)	1
98	1107 385	Flat Washer 1/2	4
99	1724 631	Wiring Harness (See Fig. 4)	1
100	1724 542	Decal (PTO) (Mod-05)	1
	1725 507	Decal (PTO) (Mod-06)	1
101	1106 886	Capscrew 5/16-18 x 1-3/4	3
102	1724 529	Rear Fender	1
103	1723 506	Decal (Instrument Panel)	1
104	1103 994	Shakeproof Washer	2
105	1110 672	Mach. Screw #8-32 x 5/8	2
106	1109 766	Nut #8-32	2
107	1100 240	Lockwasher #10	2
108	1723 530	Heat Deflector	1

# TRACTOR ASSEMBLY MODEL 1886S-05 AND -06

## PARTS LIST FOR FIGURE 1 - CONTINUED

Ref. No.	Part No.	Description	No. Req'd	Ref. No.	Part No.	Description	No. Req'd
109	1717 890	Thumb Screw	1	130	1724 539	Decal (Instruction)	1
110	1805 342	Taillight Assembly (Inc No. 111 and 112)	1	131	1724 541	Decal (Instruction) (Mod-05)	1
111	*	Bulb (Mfg. No. 1895)	1		1725 508	Decal (Instruction) (Mod-06)	1
112	1805 110	Lens Only	1	132	1722 752	Decal Grille (Mod-05)	1
113	1116 197	Mach. Screw #6-32 x 1/2	2		1725 514	Decal Grille (Mod-06)	1
114	1109 764	Hex Nut 6-32	2	133	1187 949	Washer - Shakeproof #10	4
115	1723 613	Leaf Spring	1	134	1114 838	Screw - Fil Hd Mach. #10-32 x 5/16	4
116	1722 701	Tube Assembly - (Control Valve to Tee)	1	135	1722 923	Spacer	2
117	1723 611	Spring Support	1	136	1106 969	Screw - Hex Hd Cap 7/16-14 x 1	2
118	1100 346	Cotter Pin 3/32 x 3/4	2	137	1185 244	Nut - Nylok 1/4-28	2
119	1106 852	Screw - Hex Hd Cap 1/4-20 x 2	2	138	1121 707	Nut - Hex Jam 1/4-28	2
120	1106 913	Screw - Hex Hd Cap 3/8-16 x 5/8	2	139	1805 169	Screw - Hex Hd Cap 1/4-28 x 3/4	2
121	1722 559	Engine Support	1	140	1718 266	Key Only	1
122	1717 854	Clamp Wire	1	141	1723 608	Pivot Shaft Tie	2
123	1717 370	Lead Assembly	2	142	1721 369	Wear Strip	2
124	1717 394	Lead Assembly	1	143	1103 989	Shakeproof Lockwasher #6	2
125	1717 369	Lead Assembly	1	144	1717 859	Tape Strip 90" (Mod-05)	1
126	1722 733	Ground Wire	1	145	1723 612	Pivot Shaft	2
127	1722 732	Positive Wire	1	146	1185 985	Kep's Nut	4
128	1722 731	Starter Wire	1	147	1103 997	Lockwasher 1/2	4
129	1185 277	Drive Pin 1/4 x 3/4	2	148	1805 345	Tie Cable	1

# TRACTOR ASSEMBLY MODEL 1886S-05 AND -06





# TRACTOR ASSEMBLY MODEL 1886S-05 AND -06

## PARTS LIST FOR FIGURE 2

Ref. No.	Part No.	Description	No. Req'd
1	1100 351	Cotter Pin 1/8 x 1-1/4	4
2	1185 758	Castle Nut - Special 1-1/4	2
3	1107 387	Flat Washer 3/4	1
4	1718 602	Front Axle	1
5	1104 954	Grease Fitting	4
6	1718 502	Steering Arm R. H.	1
7	1718 575	Tie Rod	1
8	1718 513	Steering Arm L. H.	1
9	1185 728	Flange Bearing	4
10	1185 730	Race Thrust	4
11	1185 988	O-Ring	2
12	1185 729	Thrust Bearing	2
13	1719 003	Ball Joint	4
14	1109 533	Hex Nut 5/8-18	2
15	1100 247	Lockwasher 5/8	4
16	1185 082	Lock Nut 5/8-18	4
17	1104 336	Square Key 1/4 x 1	2
18	1185 612	Sleeve Bearing	2
19	1718 515	PTO Sheave	1
20	1718 568	PTO Shaft	1
21	1185 100	Ball Bearing	2
22	1185 689	Retaining Ring	2
23	1108 887	Jam Nut 3/8-16	2
24	1107 209	Capscrew 3/8-24 x 1-1/2	2
25	1182 554	Set Screw 5/16-18 x 5/16	1
26	1110 108	Lock Nut 3/8-16	12
27	1724 460	Arm - Brake Extension	2
28	1724 459	Swivel	2
29	1185 661	Roller Bearing Cone	4
30	1185 660	Roller Bearing Cup	4
31	1719 601	Felt Seal	2
32	1719 599	Cap	2
33	1722 832	Axle Support	1
34	1718 616	Idler Shaft Bail	1
35	1719 147	Belt Guide	1
36	1718 497	Belt Guide	1
37	1185 376	Roll Pin 3/16 x 1-1/2	2
38	1718 548	Axle Pivot Pin	1
39	1106 878	Capscrew 5/16-18 x 1	2
40	1182 563	Hex Nut 5/16 x 18	5
41	1100 242	Lockwasher 5/16	6
42	1718 533	Arm Pin	1
43	1100 346	Cotter Pin 3/32 x 3/4	9
44	1107 383	Flat Washer 3/8	6
45	1718 528	Control Arm	1
46	1723 416	Switch	1
47	1722 565	Torsion Spring	1
48	1722 667	Clamp - Tubing	1
49	1722 564	Control Rod	1
50	1112 587	Clevis Pin	1
51	222 007	Clutch Yoke	1
52	1724 458	PTO Control Rod	1
53	1703 011	Spring Cotter	1
54	1715 711	Handle Grip	1
55	1723 304	Lever - PTO	1
56	1708 268	Washer	1
57	1701 411	Bowed Washer	1
58	1106 872	Capscrew 5/16-18 x 5/8	1
59	1100 241	Lockwasher 1/4	3
60	1121 507	Hex Nut 1/4-20	3
61	1718 606	Belt Guide	1
62	1107 382	Flat Washer 5/16	3
63	1106 915	Capscrew 3/8-16 x 3/4	18
64	1100 243	Lockwasher 3/8	48

Ref. No.	Part No.	Description	No. Req'd
65	1106 913	Capscrew 3/8-16 x 5/8	2
66	1703 615	Extension Spring	1
67	1185 552	Drive Pin 3/16 x 1-3/4	1
68	1107 385	Flat Washer 1/2	2
69	1100 356	Cotter Pin 3/32 x 1	2
70	1718 567	Idler Shaft	1
71	1185 064	Ball Bearing	1
72	1187 439	Retaining Ring Internal	1
73	1719 202	Idler Sheave	1
74	1118 809	Retaining Ring External	1
75	1721 405	Steering Plate	1
76	1721 378	Spacer	1
77	1185 034	Flange Bushing	4
78	1106 880	Capscrew 5/16-18 x 1-1/4	1
79	1721 989	Connector	2
80	1121 509	Hex Nut 3/8-16	18
81	1713 432	Drive Pin 3/16 - 1-1/4	2
82	1724 447	Control Rod	1
83	1724 461	Brake Rod	2
84	1724 456	Switch Platform	1
85	1120 209	Roll Pin 3/16 x 3/4	1
86	1719 539	Pedal Pad	1
87	1724 437	Brake Pedal	1
88	1724 434	Brake Arm Assembly	1
89	1725 413	Speed Control Pedal	1
90	1724 467	Control Arm	1
91	1724 359	Drive Shaft	1
92	1106 888	Capscrew 5/16-18 x 2	3
93	1110 107	Lock Nut 5/16-18	1
94	1724 453	Torsion Spring	1
95	1108 844	Square Key 1/4 x 1-1/4	1
96	1718 588	Steering Shaft	1
97	1185 319	Bronze Bearing	1
98	1724 526	Steering Bridge	1
99	1707 546	Thrust Washer	2
100	1185 711	Bronze Bearing	1
101	1107 064	Capscrew 5/8-11 x 2	1
102	1724 454	Tie Rod	1
103	1718 555	Spacer	1
104	1718 506	Gear 23T	1
105	1805 345	Tie - Cable	1
106	1724 440	Shaft Assembly - Transfer	1
107	1724 457	Flange Bearing	2
108	1723 110	Wheel Hub Assembly (Inc No. 29, 30, 31, 32 and 184)	2
109	1724 322	Wheel Nut	8
110	1185 136	Keyp's Screw #10-32 x 3/8	2
111	1108 889	Hex Nut 1/2 x 13	1
112	1104 436	Woodruff Key 3/16 x 3/4	1
113	1106 832	Screw - Hex Hd Cap 1/4-20 x 5/8	2
114	1185 902	Elbow 45°	1
115	1106 917	Capscrew 3/8-16 x 7/8	8
116	1100 113	Socket Hd Scr 1/4-20 x 1/2	1
117	1724 468	U-Bolt 3/8-16	2
118	1113 527	Retaining Ring	2
119	1186 016	Hi-Pro Key	1
120	1724 406	Fender Support	1
121	1724 355	Pin - Cylinder Rod	1
122	1724 357	Pivot Shaft	1
123	1100 350	Cotter Pin 1/8 x 1	1
124	1103 251	Capscrew 1/2-13 x 1	4
125	1100 245	Lockwasher 1/2	6
126	1715 428	Wheel Bolt 1/2-20	20



# TRACTOR ASSEMBLY MODEL 1886S-05 AND -06

## PARTS LIST FOR FIGURE 2 - CONTINUED

Ref. No.	Part No.	Description	No. Req'd
127	1724 416	Drawbar	1
128	1100 055	Capscrew 1/2-13 x 1-1/4	2
129	1187 255	Woodruff Key 5/16 x 1-1/4	2
130	1708 599	Flat Washer	2
131	1120 390	Lock Nut 3/4-10	2
132	1724 089	Wheel Hub	2
133	1724 496	Frame - L. H.	1
134	1724 498	Frame - R. H.	1
135	1724 632	Clevis Pin 1/2 x 1-1/4	1
136	1106 870	Screw - Hex Hd Cap 5/16-18 x 1/2	2
137	1706 594	Washer	2
138	1724 569	Support Assy - Control Shaft	1
139	1718 593	Block Bearing	2
140	1724 623	Latch Assembly - Brake	1
141	1890 948	Washer	1
142	1106 923	Capscrew 3/8-16 x 1-1/4	4
143	1724 446	Rod End	1
144	1724 465	Support Assembly - Transmission	1
145	1717 563	Connector	1
146	1121 510	Hex Nut 7/16-14	2
147	1724 444	Rod - Neutral Adjuster	1
148	1719 178	Cylinder Hose Assembly	1
149	1185 739	Elbow 90°	3
150	1724 520	Cylinder	1
151	1722 625	Stop Assembly	2
152	1719 179	Cylinder Hose Assembly	1
153	1724 585	Pivot Pin	1
154	1104 007	Lockwasher 5/16	4
155	1705 092	Washer	1
156	1724 522	Foot Pedal L. H.	1
157	1722 562	Drag Link	1
158	1185 976	Grease Fitting	2
159	1724 599	Brake Assembly R. H.	1
160	1724 580	Brake Assembly L. H.	1
161	1724 478	Disc Brake	2
162	1724 027	Fan	1
163	1722 833	Spacer	3
164	1106 919	Capscrew 3/8-16 x 1	18
165	1103 514	Set Screw 3/8-16 x 1-1/2	2
166		Transaxle Hydrostatic Assembly (See Figure 3)	1
167	1104 222	Cotter Pin 3/16 x 1-1/2	2
168	1720 527	Interlock Switch	1
169	1723 302	PTO Lever Support	1
170	1185 715	Lockwasher 3/8	4
171	1722 698	Tube Assembly - 37° Flare	1
172	1722 699	Tube Assembly - 37° Flare	1
173	1185 904	Tee	2
174	1722 696	Tube Assembly - 37° Flare	1
175	1722 697	Tube Assembly - 37° Flare	1
176	1185 903	Elbow 45°	1
177	1722 560	Clamp - Coupling	4
178	1717 627	Coupling - Body	4
179	1720 733	Plug - Dust	4
180	1723 384	Special Washer	1
181	1106 892	Hex Hd Screw	1
182	1723 468	Spindle Assembly	2
183	1723 092	Wheel Spacer	2
184	1723 106	Wheel Hub	2

Ref. No.	Part No.	Description	No. Req'd
<b>MODEL 18018 - STD. LAWN TIRE KIT</b>			
185	1721 431	Wheel and Tire Assembly	2
	1717 204	Tire 27 x 8.50 - 15	2
	1721 432	Wheel	2
	1718 242	Valve	2
<b>MODEL 18019 - STD. AGR. TIRE KIT</b>			
186	1721 440	Wheel and Tire Assy R. H.	1
	1721 441	Wheel and Tire Assy L. H.	1
	1718 243	Tire 27 x 8.50 - 15	2
	1721 432	Wheel	2
	1718 242	Valve	2
<b>MODEL 18016 - TERRA LAWN TIRE KIT</b>			
187	1721 434	Wheel and Tire Assembly	2
	1719 548	Tire - 26 x 12 - 12	2
	1721 435	Wheel	2
	1718 242	Valve	2
<b>MODEL 18017 - TERRA AGR. TIRE KIT</b>			
188	1721 437	Wheel and Tire Assy R. H.	1
	1721 438	Wheel and Tire Assy L. H.	1
	1718 298	Tire 26 x 12 - 12	2
	1721 435	Wheel	2
	1718 242	Valve	2
<b>MODEL 18020 - DUAL WHEEL KIT</b>			
189	1721 428	Wheel and Tire Assy EXT	2
	1718 117	Hub Bolt	12
	1717 204	Tire 27 x 8.50 - 15	2
	1718 242	Valve	2
	1721 429	Extension Wheel	2
<b>MODEL 18027 - HI FLOATATION FRONT WHEEL KIT</b>			
190	1723 104	Wheel and Tire Assembly	2
	1723 116	Tire 18 x 8.50 - 10	2
	1723 115	Wheel Assembly (Inc No. 29, 30, 31 and 32)	2
	1715 855	Valve Stem	2
<b>MODEL 18028 - STD. FRONT WHEEL KIT</b>			
191	1723 103	Wheel and Tire Assembly	2
	1719 153	Tubeless Tire 5.70/5.00 x 8	2
	1723 111	Wheel Assembly (Inc No. 29, 30, 31 and 32)	2
	1715 855	Valve Stem	2
<b>BRAKE ASSEMBLY</b>			
192	1724 587	Bracket - Secondary	1
193	1724 588	Lever Assembly - Actuating	1
194	1724 589	Plate Assembly - Stator	2
195	1724 590	Bolt	2
196	1724 591	Lock Nut	2
197	1724 473	Support - Brake	1

## TRACTOR ASSEMBLY MODEL 1886S-05 AND -06

### PARTS LIST FOR FIGURE 2 - CONTINUED

Ref. No.	Part No.	Description	No. Req'd
CYLINDER ASSEMBLY			
198	1724 511	Cylinder Head	1
199	1724 515	Piston	1
200	1110 154	Hex Nut - Lock 5/8-18	1
201	1118 735	Snap Ring	1
202	1186 017	O-Ring	2
203	1186 018	Ring Washer	3

Ref. No.	Part No.	Description	No. Req'd
CYLINDER ASSEMBLY - CONT			
204	1177 509	O-Ring	1
205	1177 395	O-Ring	1
206	1186 019	Ring Washer	1
207	1185 266	Oil Seal	1
208	1724 512	Piston Rod Assembly	1
209	1724 516	Cylinder Tube Assembly	1

## TRANSAXLE ASSEMBLY MODEL 1886S-05 AND -06

### PARTS LIST FOR FIGURE 3

Ref. No.	Part No.	Description	No. Req'd
*1	1724 349	Hydrostatic Package	1
2	1100 043	Capscrew 3/8 x 1-1/4	3
3	1100 243	Lockwasher 3/8	4
4	1185 376	Roll Pin 3/16 x 1-1/2	1
5	1185 737	Fitting - Elbow 90°	2
6	1724 390	Fitting - Elbow 90°	2
7	1724 247	Tube Assembly - 37° Flare	1
8	1720 282	Gasket	1
9	1724 078	Pinion - Bevel 18T	1
10	1185 438	Retaining Ring - 3/4 Ext.	1
11	1719 859	Oil Filter	1
12	1186 022	Spirol Roll Pin	1
13	1724 449	Speed Control Arm	1
14	1724 445	Control Pin	1
15	1720 699	Cushion Block	1
16	1185 219	Retaining Ring External	2
17	1720 706	Bearing	1
18	1720 361	Thrust Washer	2
19	1720 523	Neutralizer Arm	2
20	1724 582	Extension Spring	2
21	1720 529	Thrust Washer	3
22	1185 732	Retaining Ring External	4
23	1724 581	Bearing	1
24	1724 452	Neutral Stop Arm	1
25	1706 782	Wave Washer	1
26	1118 804	Retaining Ring	1
27	1724 443	Lockplate Assembly	1
28	1724 455	Lockplate Control Rod	1
29	1109 586	Hex Nut 5/16-24	1
30	1710 583	Rod End	1
31	1705 602	Clevis Pin 5/16 x 1-3/16	1
32	1100 349	Cotter Pin 1/8 x 3/4	1
33	1724 093	Dip Stick	1
34	1724 091	Tube	1
35	1724 102	Housing - Transaxle	1
36	1185 930	Pipe Plug (Sq Hd Magnetic)	1
37	1724 110	Differential Assembly (Inc Ref. No. 22 and 38 thru 47)	1
38	1100 242	Lockwasher 5/16	4

Ref. No.	Part No.	Description	No. Req'd
39	1186 015	Screw - Hex Hd Cap 5/16-18 x 3-1/2 H. T.	4
40	1713 466	Pinion - Bevel 10T	2
41	1724 075	Pinion Shaft	1
42	1724 072	Carrier - Bull Gear R. H.	1
43	1724 071	Carrier - Bull Gear L. H.	1
44	1724 074	Bevel Gear 22T	2
45	1724 085	Bull Gear 44T	1
46	1724 076	Axle R. H.	1
47	1724 077	Axle L. H.	1
48	1724 094	Spacer	1
49	1186 006	Race - Thrust . 125	4
50	1186 007	Bearing - Roller Thrust	2
51	1186 003	Bearing - Needle	4
52	1185 929	Oil Seal	2
53	1724 104	Cover - Trans. Hous. R. H.	1
54	1724 086	Gasket - Cover R. H.	1
55	1185 771	Screw - Counterbore Cap 3/8-16 x 1	17
56	1110 189	Dowel Pin 3/8 x 1	5
57	1724 106	Cover - Trans. Hous. L. H.	1
58	1724 087	Gasket - Cover L. H.	1
59	1185 774	Bearing-Needle (Closed End)	2
60	1724 079	Bevel Gear 56T	1
61	1724 081	Pinion Shaft 15T	1
62	1100 279	Key - Woodruff	1
63	1186 002	Race - Thrust . 125	4
64	1185 764	Bearing - Roller Thrust	1
65	1186 010	Bearing-Needle (Closed End)	2
66	1724 083	Cluster Gear 16T and 55T	1
67	1725 415	Neutral Anchor	1
68	1890 948	Flat Washer	1
69	1107 383	Flat Washer	1
70	1100 047	Capscrew 3/8 x 1-1/2	1
71	1724 200	Transaxle Assembly (Inc Ref 33 thru 66)	1
	1719 650	Hydrostatic Fluid, 1 Gal.	
	1721 514	Hydrostatic Fluid, 2-1/2 Gal.	

\* Available Only as a Complete Package

# TRANSAXLE ASSEMBLY MODEL 18865-05 AND -06

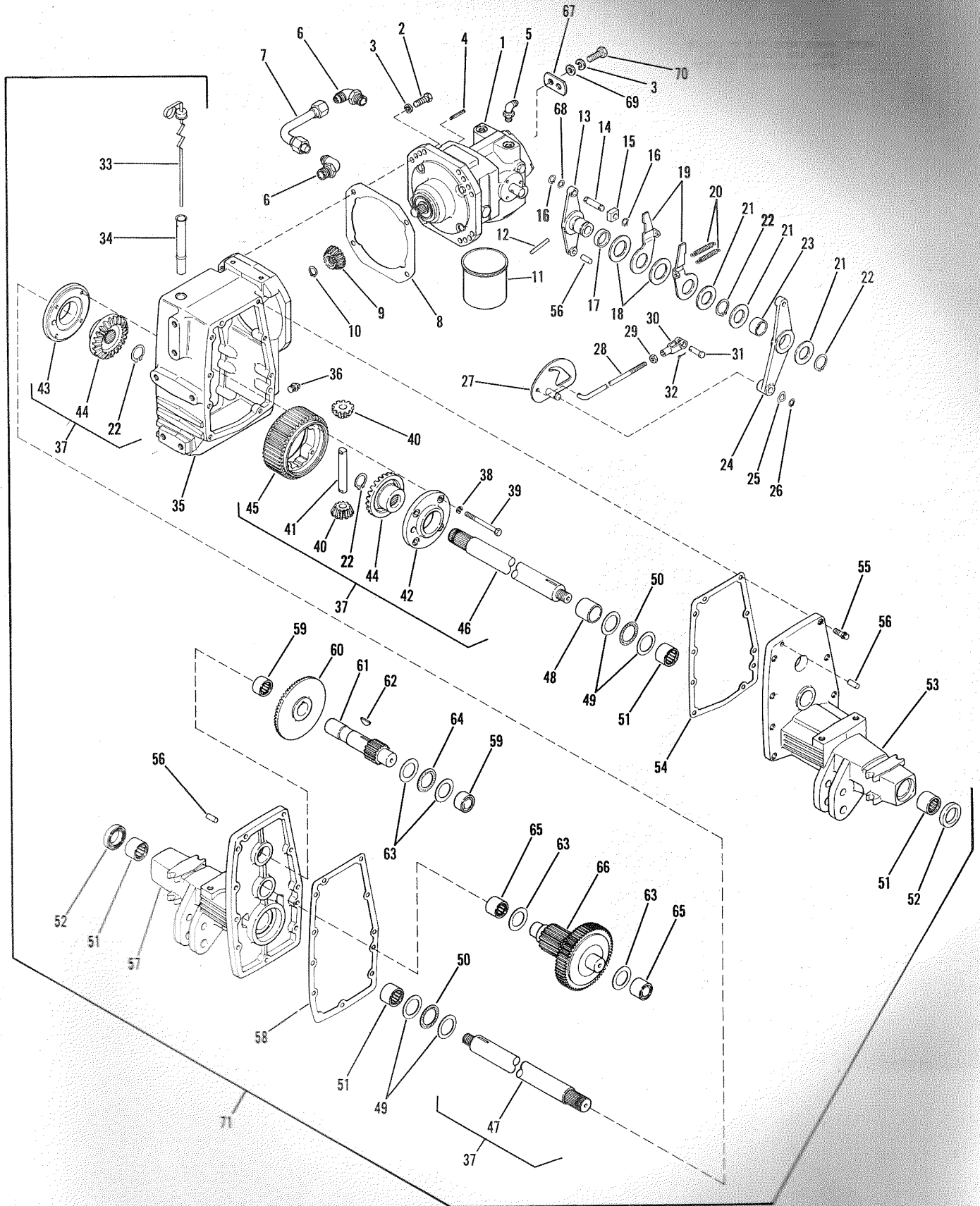


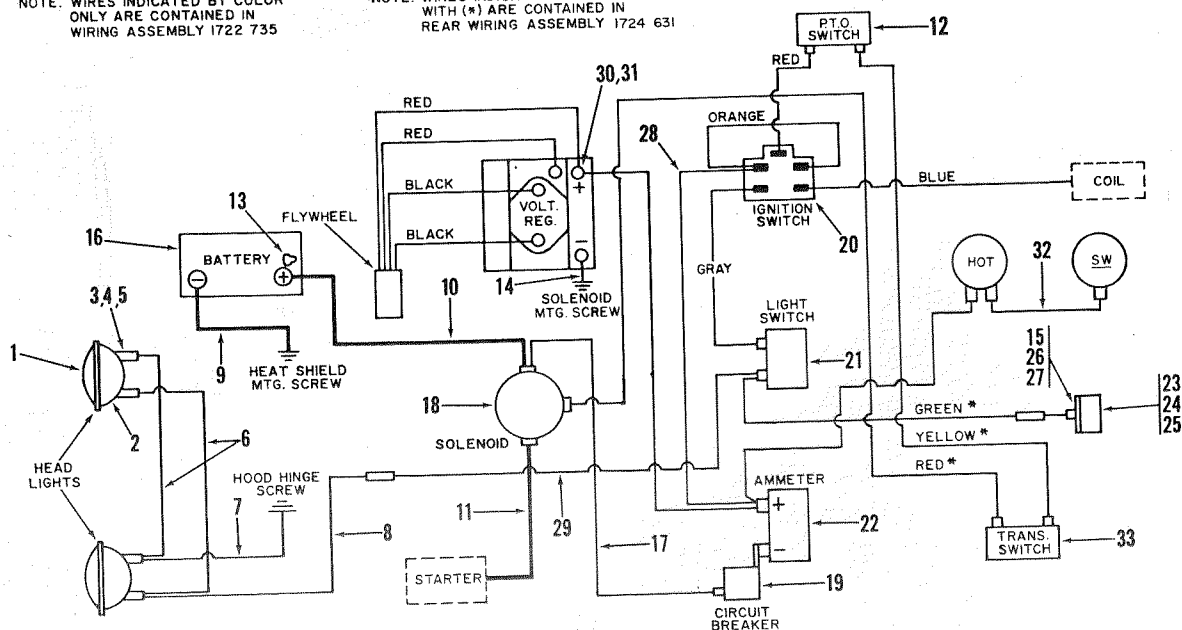
FIGURE 3

# DUAL LIGHT GROUP WIRING DIAGRAM

FIGURE 4

NOTE: WIRES INDICATED BY COLOR ONLY ARE CONTAINED IN WIRING ASSEMBLY 1722 735

NOTE: WIRES INDICATED BY COLOR WITH (\*) ARE CONTAINED IN REAR WIRING ASSEMBLY 1724 631



Parts List For Wiring Diagram

Ref. No.	Part No.	Description	No. Req'd
1	**	Headlight Bulb (Mfg No.4406)	2
2	1719 708	Retainer Ring	2
3	1185 746	Spring-Clip	6
4	1185 748	Washer-Wave	6
5	1185 911	Rivet-3/16 x 7/8	6
6	1717 370	Lead Assembly	2
7	1717 394	Lead Assembly	1
8	1717 369	Lead Assembly	1
9	1722 733	Ground Wire	1
10	1722 732	Positive Wire	1
11	1722 731	Starter Wire	1
12	1720 527	Interlock Switch	1
13	1721 413	Terminal Boot-Battery	1
14	1722 741	Wire-Reg. to Ground	1
15	1109 764	Hex Nut #6 - 32	2
16	1718 027	Battery	1
17	1722 739	Wire-Solenoid to Circuit Breaker	1

Ref. No.	Part No.	Description	No. Req'd
18	1717 048	Solenoid	1
19	1722 552	Circuit Breaker	1
20	1721 409	Ignition Switch	1
21	1717 256	Light Switch	1
22	1718 039	Ammeter	1
23	1805 342	Taillight Assy (Inc Ref No. 24 and 25)	1
24	**	Bulb (Mfg No. 1895)	1
25	1805 110	Lens Only	1
26	1116 197	Mach Screw 6-32 x 1/2	2
27	1103 989	Lockwasher #6	2
28	1722 740	Wire-Reg. to Ammeter	1
29	1722 736	Wire-Headlight	1
30	1114 346	Fil Hd Mach Screw #10-24 x 3/8	2
31	1100 240	Lockwasher #10	2
32	1724 630	Wire - Panel	1
33	1723 416	Interlock Switch	1

\*\* Not Stocked. Purchase from your local automotive or electrical supplier.