

BOLENS

HUSKY
TRACTOR
MODELS 1556-01
1556-02
1556-03

ILLUSTRATED PARTS CATALOG



BOLENS

PORT WASHINGTON, WISCONSIN, U.S.A.

PRINTED IN U.S.A.

TRACTOR ASSEMBLY MODELS 1556-01, 02 AND 03

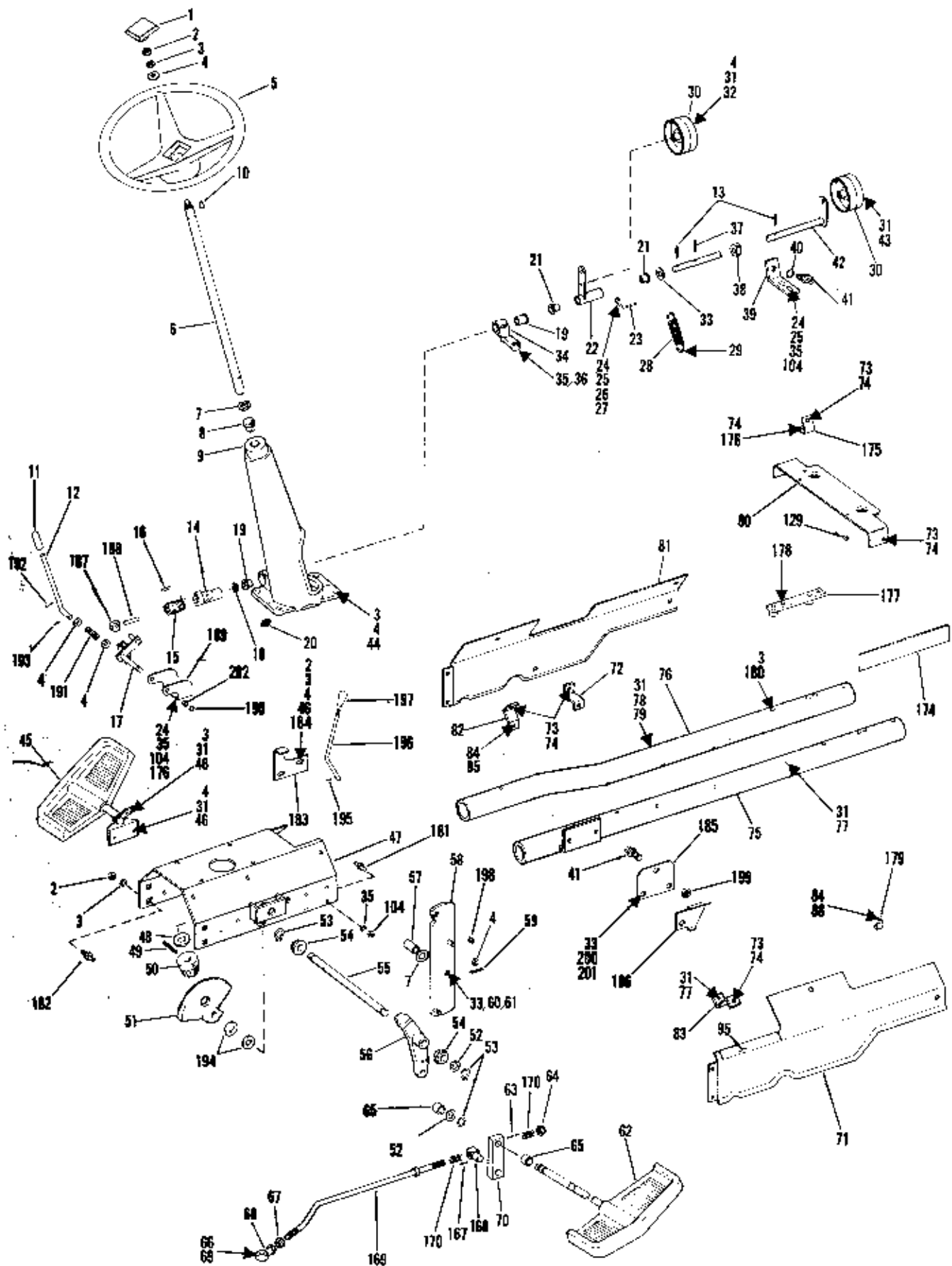


FIGURE 1

TRACTOR ASSEMBLY MODELS 1556-01, 02 AND 03

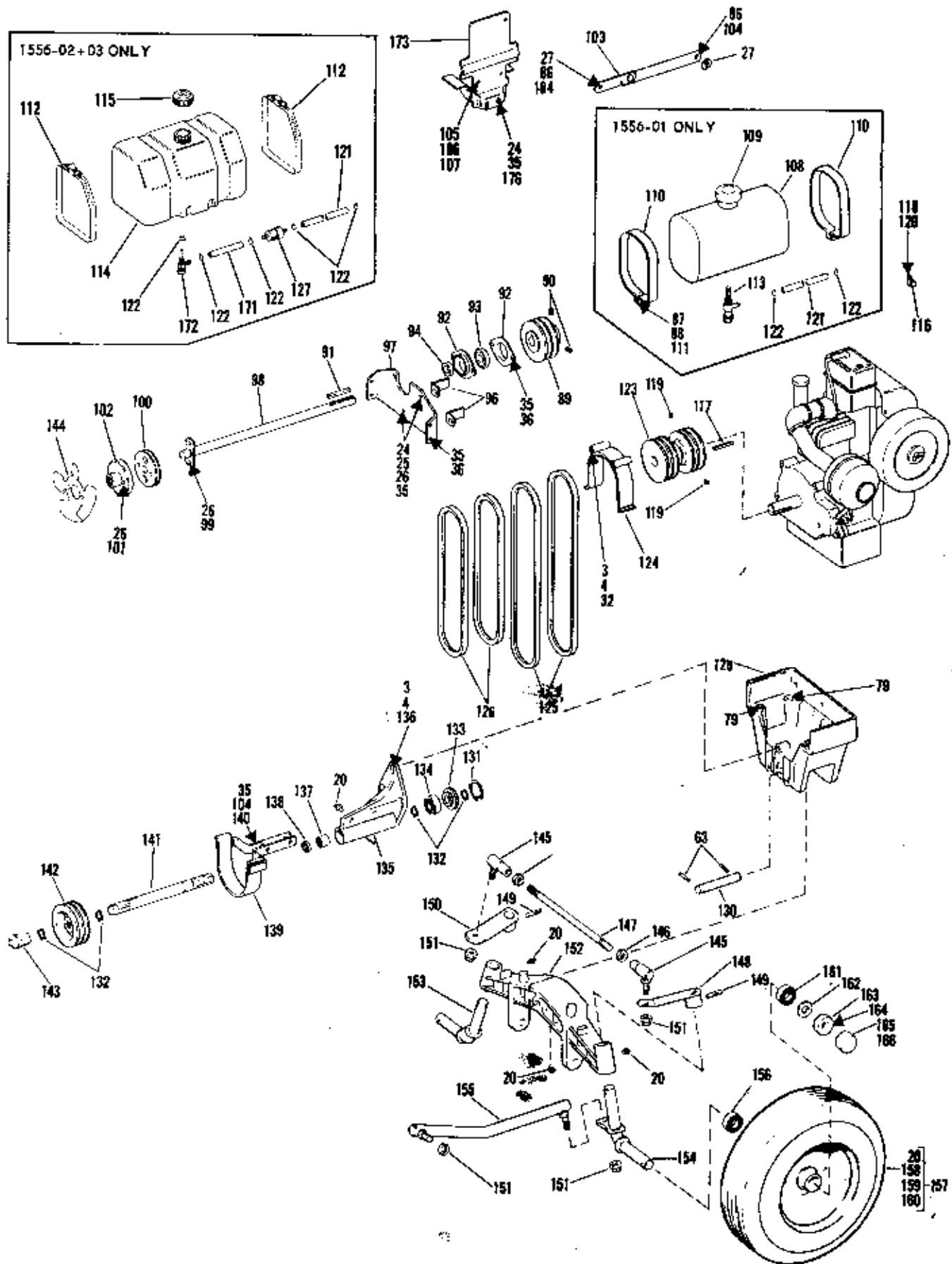


FIGURE 1

TRACTOR ASSEMBLY MODELS 1556-01, 02 AND 03

FIGURE 1 PARTS LIST

Ref. No.	Part No.	Description	No. Req'd
1	1722 750	Cap	1
2	1121 509	Hex Nut 3/8-16	9
3	1100 243	Lock Washer 3/8	15
4	1107 383	Flat Washer 3/8	17
5	1721 805	Steering Wheel	1
6	1717 269	Steering Shaft	1
7	1713 122	Bowed Washer	2
8	1717 263	Bearing	1
9	1717 258	Steering Support	1
10	1104 436	Woodruff Key 3/16 x 3/4	1
11	1721 896	Grip	1
12	1723 379	PTO Control Lever	1
13	1704 692	Roll Pin 1/8 x 1	2
14	1723 370	PTO Pivot Control	1
15	1715 680	Spring	1
16	1120 210	Roll Pin 3/16 x 1	1
17	1723 380	PTO Pivot Ass'y.	1
18	1706 782	Bowed Washer	1
19	1185 647	Bearing	2
20	1104 954	Grease Fitting (1556-01 Only)	4
	1185 976	Grease Fitting (1556-02 & 03 Only)	4
21	1715 538	Flanged Bushing	2
22	1720 436	Idler Arm	1
23	1720 717	Belt Guide	1
24	1107 382	Flat Washer 5/16	3
25	1100 078	Cap Screw 5/16-18 x 7/8	5
26	1110 107	Lock Nut 5/16-18	5
27	1705 905	Bowed Washer	3
28	1716 728	Spring	1
29	1185 584	Cotter Pin 3/16 x 3/4	1
30	1716 584	Idler Pulley	2
31	1110 108	Lock Nut 3/8	5
32	1106 936	Cap Screw 3/8-16 x 2-1/2	3
33	1107 385	Flat Washer 1/2	2
34	1716 590	Shaft Support	1
35	1100 242	Lock Washer 5/16	8
36	1106 872	Cap Screw 5/16-18 x 5/8	7
37	1185 892	Drive Pin 1/8 x 1	1
38	1720 962	Interlocking Switch Cam	1
39	1720 533	Switch Support	1
40	1185 844	Shakeproof Washer 9/16	1
41	1720 963	Interlock Switch	2
42	1716 615	Control Shaft	1
43	1106 930	Cap Screw 3/8-16 x 1-3/4	1
44	1106 923	Cap Screw 3/8-16 x 1-1/4	4
45	1721 930	LH Pedal	1
46	1106 917	Cap Screw 3/8-16 x 7/8	2
47	1720 439	Mounting Plate	1
48	1708 012	Flat Washer	1
49	1185 284	Drive Pin 1/4 x 2	1
50	1713 811	Steering Pinion	1
51	1713 809	Steering Gear	1
52	1705 092	Washer	2
53	1185 668	Retaining Ring	3
54	1185 558	Sleeve Bearing	2
55	1721 932	Cross Shaft	1
56	1716 563	Steering Arm	1
57	1720 610	Sleeve	1
	1720 729	Tool Lift Lever	1
	1706 011	Cotter Spring	1
60	1185 486	Lock Nut 1/2-13	1

Ref. No.	Part No.	Description	No. Req'd
61	1107 035	Cap Screw 1/2-13 x 2	1
62	1721 933	RH Pedal	1
63	1185 232	Drive Pin 3/16 x 1-1/4	3
64	1710 118	Lock Nut 7/16-20	1
65	1714 233	Nylon Bushing	2
66	1720 929	Control Pin	1
67	1121 710	Jam Nut 5/16-20	1
68	1721 612	Rod End	1
69	1720 699	Block Cushion	1
70	1722 919	Control Arm	1
71	1723 696	Side Panel RH	1
72	1721 912	Side Panel Support LH Front	1
73	1185 872	Screw 5/16-18 x 5/8	3
74	1185 873	Tinnerman Nut 5/16-18	4
75	1721 895	Frame Tube RH	1
76	1720 341	Frame Tube LH	1
77	1106 938	Cap Screw 3/8-16 x 2-3/4	5
78	1185 506	Jam Nut 3/8-18	1
79	1111 614	Cap Screw 3/8-16 x 3	4
80	1723 697	Panel Support	1
81	1723 694	Side Panel LH	1
82	1721 910	Side Panel Support LH Rear	1
83	1721 911	Side Panel Support RH	1
84	1115 931	Screw 1/4-20 x 5/8	3
85	1185 456	Tinnerman Nut	1
86	1185 577	Self Threading Screw	2
87	1100 241	Lock Washer 1/4 (1556-01 Only)	2
88	1110 106	Lock Nut 1/4-20 (1556-01 Only)	2
89	1720 365	Driven Pulley	1
90	1103 494	Set Screw 3/8-16 x 1/2	2
91	1104 335	Sq. Key 3/16 x 2	1
92	1185 838	Bearing Flange	2
93	1800 757	Ball Bearing	1
94	1800 417	Bearing Collar	1
95	1721 890	Decal (Lift Indicator)	1
96	1720 437	Belt Guide	2
97	1720 438	Bearing Support	1
98	1720 455	Drive Shaft	1
99	1110 818	Soc. Hd. Cap Screw 5/16-18 x 3/4	2
100	1716 561	Bonded Coupling	1
101	1185 826	Soc. Hd. Cap Screw 5/16-18 x 1	2
102	1720 348	Shaft Coupling	1
103	1717 236	Hood Stop	1
104	1182 563	Hex Nut 5/16-18	8
105	1185 839	Shakeproof Washer 1/4	2
106	1723 656	Spacer	2
107	1100 806	Cap Screw 1/4-20 x 1-1/4	2
108	1714 767	Tank (1556-01 Only)	1
109	1714 766	Cap Only (1556-01 Only)	1
110	1714 685	Tank Strap (1556-01 Only)	2
111	1106 852	Cap Screw 1/4-20 x 2 (1556-01 Only)	2
112	1723 413	Tank Strap (1556-02 & 03 Only)	2
113	1718 029	Tank Outlet (1556-01 Only)	1
114	1721 579	Fuel Tank (1556-02 & 03 Only)	1
115	1723 473	Cap (1556-02 & 03 Only)	1

TRACTOR ASSEMBLY MODELS 1556-01, 02 AND 03

FIGURE 1 PARTS LIST CONTINUED

Ref. No.	Part No.	Description	No. Req'd
116	1717 854	Fuel Line Clamp	1
117	1187 474	Sq. Key 1/4 x 2-1/4	1
118	1187 559	Shakeproof Washer #10	1
119	1185 919	Set Screw 5/16-18 x 7/8	2
120	1187 429	Tap Screw #10-12	1
121	1724 119	Fuel Line 21" (1556-01 Only)	1
	1724 118	Fuel Line 16-1/4" (1556-02 & 03 Only)	1
122	1718 185	Fuel Line Clamp	AR
123	1720 444	Engine Pulley	1
124	1716 642	Belt Guide	1
125	1716 570	Belt 42-1/2" Set of 2 (PTO)	1
126	1720 573	Belt 34" Set of 2 (Eng. Dr.)	1
127	1723 521	Fuel Filter (1556-02 & 03 Only)	1
128	1717 270	Axle Support	1
129	1723 689	Bumper	2
130	1713 383	Axle Pivot	1
131	1118 730	Retaining Ring	1
132	1185 649	Retaining Ring	4
133	1721 590	Seal Washer	1
134	1185 605	Ball Bearing	1
135	1715 785	Support Housing	1
136	1106 921	Cap Screw 3/8-16 x 1-1/8	3
137	1185 010	Needle Bearing	1
138	1185 224	Oil Seal	1
139	1716 647	Belt Guide	1
140	1106 880	Cap Screw 5/16-18 x 1-1/8	2
141	1721 597	Shaft and Seal PTO (Inc 133)	1
142	1716 594	Pulley PTO	1
143	1714 132	Rubber Tip	2
144	1720 349	Fan	1
145	1713 361	Ball Joint	2
146	1103 926	Jam Nut 1/2-20	2
147	1713 385	Tie Rod	1
148	1713 378	Tie Rod Arm RH (1556-01 Only)	1
	1723 355	Tie Rod Arm RH (1556-02 & 03 Only)	1
149	1891 696	Drive Pin 5/16 x 1-1/2	2
150	1713 377	Tie Rod Arm LH (1556-01 Only)	1
	1723 354	Tie Rod Arm LH (1556-02 & 03 Only)	1
151	1110 152	Self Locking Nut 1/2-20	4
152	1718 697	Axle (1556-01 Only)	1
	1723 343	Axle (1556-02 & 03 Only)	1
153	1716 953	Spindle LH (1556-01 Only)	1
	1723 346	Spindle LH (1556-02 & 03 Only)	1
154	1716 952	Spindle RH (1556-01 Only)	1
	1723 345	Spindle RH (1556-02 & 03 Only)	1

Ref. No.	Part No.	Description	No. Req'd
155	1717 462	Drag Link	1
156	1185 616	Ball Bearing	2
157	1717 357	Wheel and Tire (20, 156 - 161)	2
158	1715 855	Valve Stem Assembly	2
159	1715 789	Wheel Only (Inc Ref 20)	2
160	1717 441	Tire 16 x 6:50 x 8	2
161	1185 615	Ball Bearing	2
162	121 898	Washer	4
163	1716 197	Set Collar	2
164	1187 857	Cap Screw 1/4-20 x 1	2
165	1715 899	Dust Cap 1-1/2 ID (Some Models)	2
166	1721 245	Dust Cap 1-5/8 ID (Some Models)	2
167	1100 350	Cotter Pin 1/8 x 1	4
168	1722 920	Pivot Block	1
169	1722 921	Control Rod Ass'y.	1
170	1721 492	Compression Spring	2
171	1723 519	Fuel Line 3-1/2" (1556-02 & 03 Only)	1
172	1723 518	Tank Outlet (1556-02 & 03 Only)	1
173	1723 655	Fuel Tank Bracket	1
174	1723 711	Frame Reinforcement	2
175	1723 698	Side Panel Bracket	1
176	1106 874	Cap Screw 5/16-18 x 3/4	3
177	1723 488	Engine Support	2
178	1100 046	Cap Screw 3/8-16 x 1	4
179	1721 252	Clip	2
180	1185 775	Cap Screw 3/8-16 x 2-3/4	4
181	1722 848	Hitch Pin Front	2
182	1722 849	Hitch Pin Rear	2
183	1723 339	Parking Brake Stop	1
184	1177 042	Shakeproof Washer	2
185	1723 296	Interlock Switch Bracket	1
186	1723 297	Interlock Switch Actuator	1
187	1723 368	Pivot Block	1
188	1891 696	Drive Pin 5/16 x 1-1/2	1
189	1723 381	PTO Control Support	1
190	1185 257	Retaining Ring	2
191	1723 367	Compression Spring	1
192	1100 346	Cotter Pin 3/32 x 3/4	1
193	1177 625	Drive Pin 1/8 x 3/4	1
194	1705 093	Flat Washer 41/64 Dia.	AR
195	1187 385	Cotter Pin 1/16 x 1/2	1
196	1723 363	Brake Control Arm	1
197	1723 298	Parking Lock Knob	1
198	1723 523	Bushing	1
199	1721 070	Pal Nut 9/16-18	1
200	1110 110	Self Locking Nut 1/2-13	1
201	1106 987	E. H. Cap Screw 1/2-13 x 1-1/4	1
202	1714 243	Nylon Bushing	2

TRACTOR ASSEMBLY MODELS 1556-01, 02 AND 03

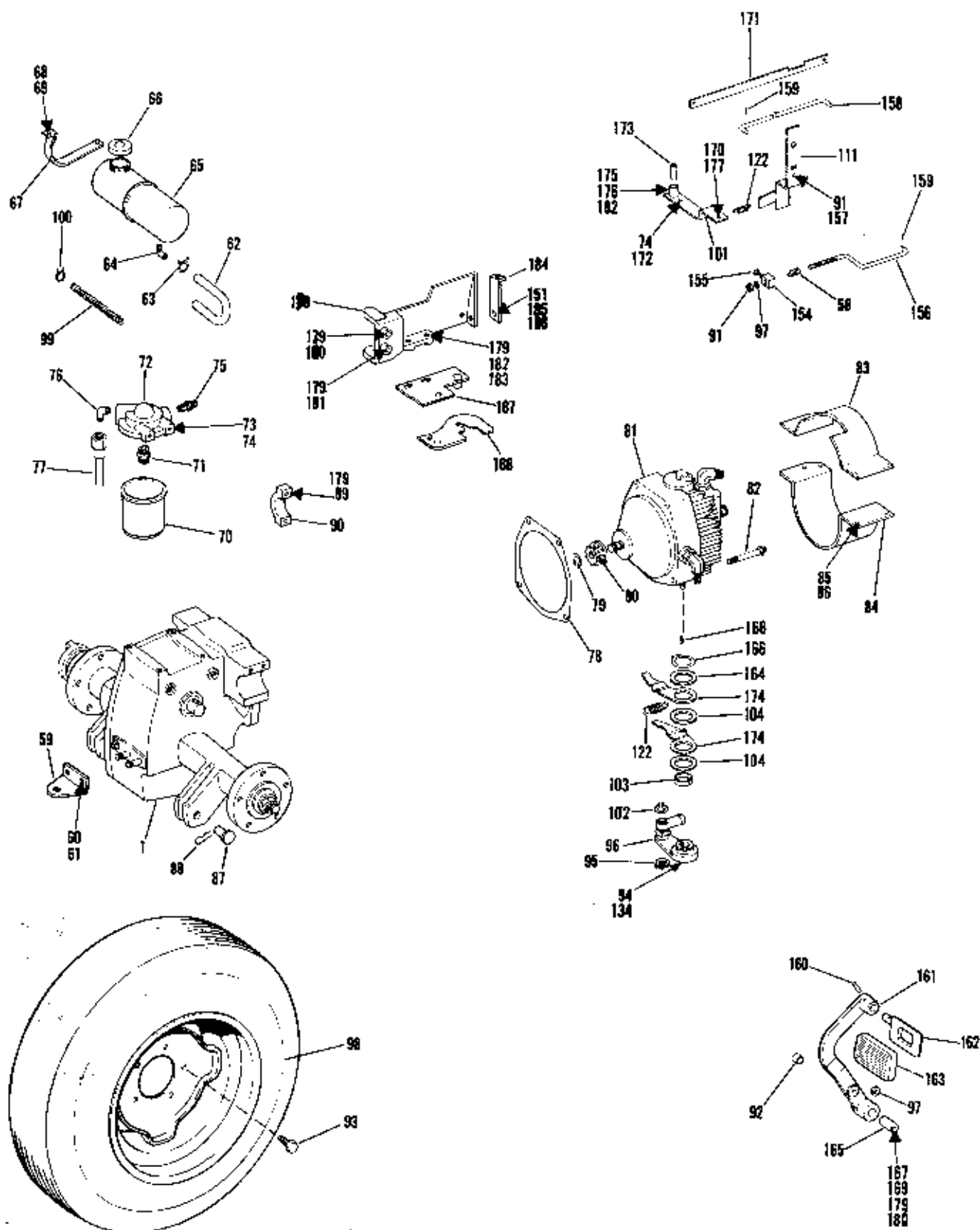


FIGURE 2

TRACTOR ASSEMBLY MODELS 1556-01, 02 AND 03

REAR AXLE
ASSY REF #1

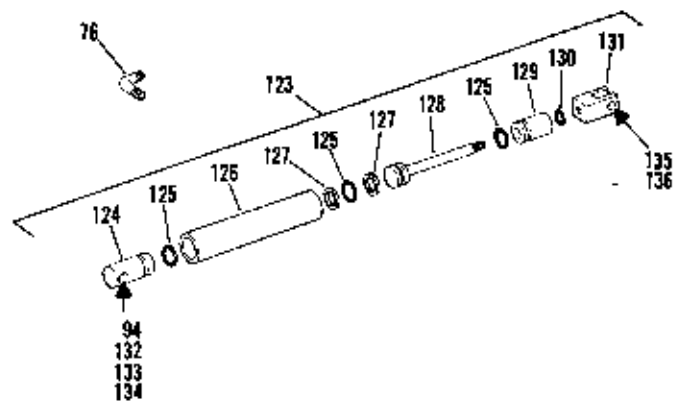
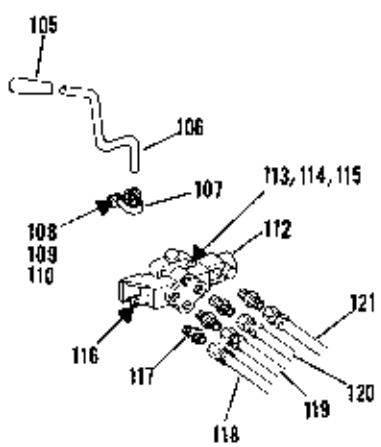
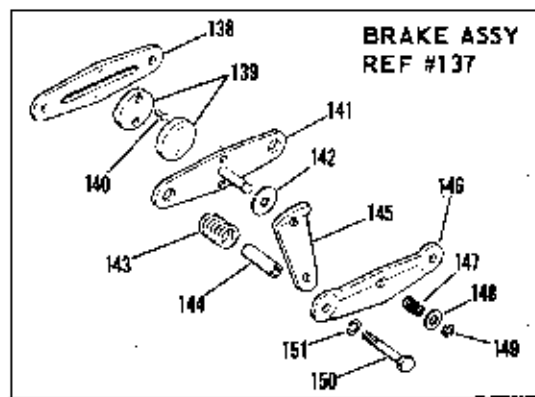
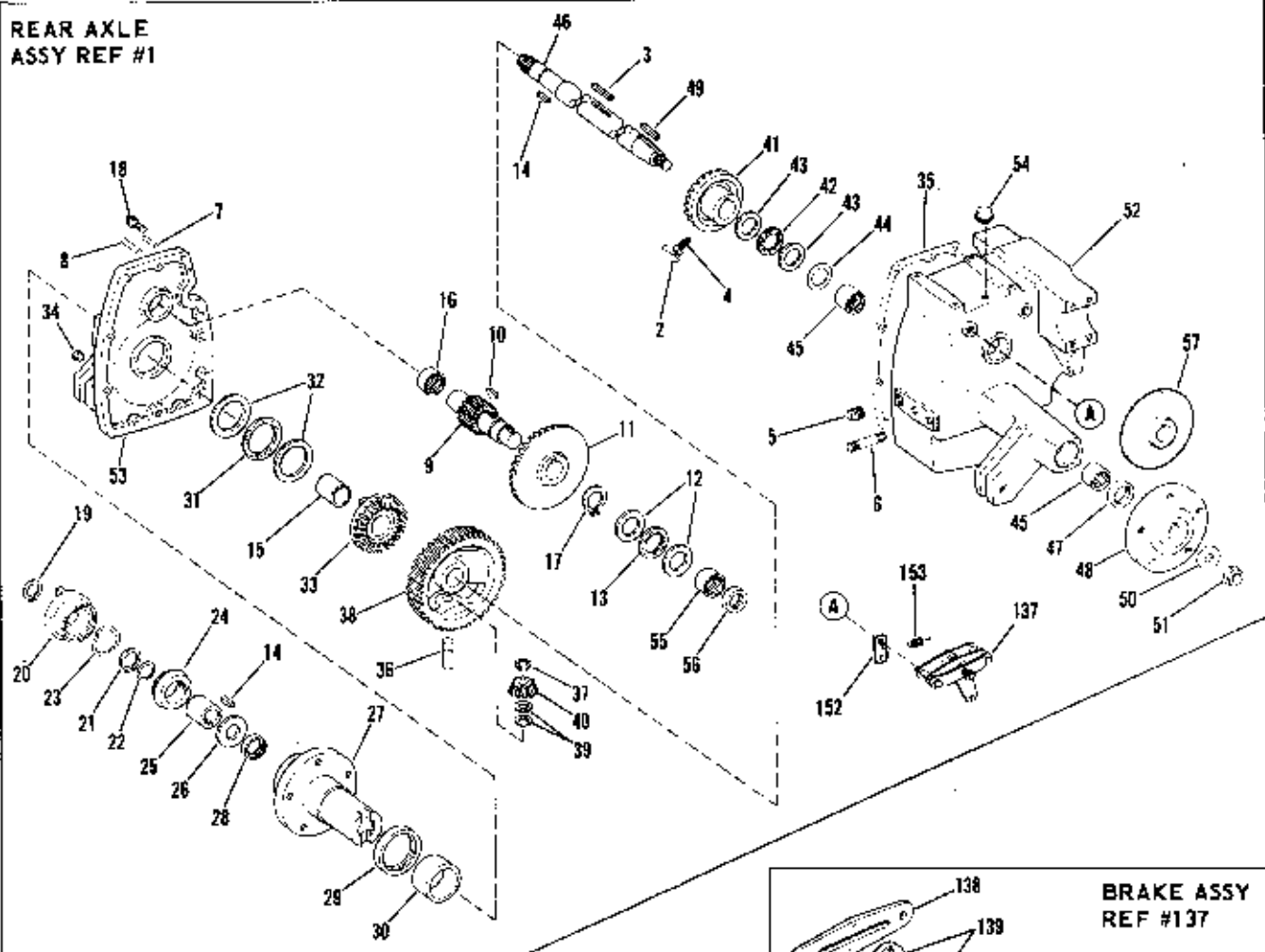


FIGURE 2

TRACTOR ASSEMBLY MODELS 1556-01, 02 AND 03

FIGURE 2 PARTS LIST

Ref. No.	Part No.	Description	No. Req'd
1	1723 515	Rear Axle Ass'y. (1556-01 & 02 Only) 14.7 to 1 Ratio	1
	1722 786	Rear Axle Ass'y. (1556-03 Only) 17.8 to 1 Ratio (Inc Ref 2 - 56, See Page 7 for Illustration)	1
2	1716 892	Locking Wire	1
3	1721 587	Key 1/4 Sq x 1-1/4	1
4	1716 519	Drive Screw	2
5	1723 819	Pipe Plug 3/8	1
6	1718 067	Stud	2
7	1185 232	Roll Pin 3/16 x 1-1/4	1
8	1110 187	Dowel Pin 5/16 x 1	2
9	1722 137	Pinion Shaft (1556-01 & 02 Only)	1
	1722 784	Pinion Shaft (1556-03 Only)	1
10	1200 034	HI Pro Key 1/4 x 7/8	2
11	1720 259	Bevel Gear	1
12	1185 767	Thrust Race	2
13	1185 764	Thrust Bearing	1
14	1104 336	Key 1/4 Sq x 1	2
15	1185 832	Bearing	1
16	1185 774	Needle Bearing	1
17	1185 303	Retaining Ring	1
18	1185 771	Ferry Screw 3/8-16 x 1	7
19	1180 025	Retaining Ring	1
20	1714 564	Adjusting Nut	1
21	1185 689	Retaining Ring	1
22	1800 338	Shim	AR
23	1714 572	Spring Washer	4
24	1714 562	Cone	1
25	1714 561	Coupling	1
26	1713 468	Thrust Washer	1
27	1720 266	LH Wheel Hub	1
28	1185 295	Oil Seal	1
29	1185 769	Oil Seal	1
30	1185 770	Bearing	1
31	1185 768	Thrust Bearing	1
32	1185 765	Thrust Race	2
33	1720 264	Bevel Gear	1
34	1105 640	Countersunk Pipe Plug	1
35	1720 257	Gasket	1
36	1713 467	Differential Pinion Shaft	2
37	1177 567	Retaining Ring	2
38	1720 268	Gear and Carrier (1556-01 & 02 Only)	1
	1722 785	Gear and Carrier (1556-03 Only)	1
39	1712 763	Thrust Washer	4
40	1713 466	Bevel Pinion	2
41	1720 271	Bevel Gear	1
42	1185 763	Thrust Bearing	1
43	1185 766	Thrust Race	2
44	1720 299	Shim	AR
45	1185 645	Needle Bearing	2
46	1720 269	Axle	1
47	1185 642	Oil Seal	1
48	1720 293	Wheel Hub	1
49	1108 848	Key 5/16 Sq x 1-1/4	1
50	1185 847	Special Flat Washer	1
51	1110 297	Lock Nut 5/8-18	1
52	1723 514	Gear Case Housing	1

Ref. No.	Part No.	Description	No. Req'd
53	1720 252	Cover	1
54	1826 82	Breather	1
55	1185 088	Needle Bearing	1
56	1185 882	Oil Seal	1
57	1722 159	Brake Disc	1
58	1724 331	Compression Spring	1
59	1714 101	Hitch	1
60	1121 511	Lock Nut 1/2-13	2
61	1100 245	Lock Washer 1/2	2
62	1723 388	Oil Line Hose	1
63	1723 386	Clamp	1
64	1703 897	Elbow	1
65	1721 900	Oil Reservoir Tank	1
66	1721 901	Tank Cap	1
67	1721 902	Tank Strap	2
68	1115 931	Screw 1/4-20 x 5/8	4
69	1185 456	Tinnerman Nut	4
70	1719 859	Oil Filter	1
71	1721 921	Special Coupling	1
72	1721 920	Filter Manifold	1
73	1100 242	Lock Washer 5/16	2
74	1106 874	Cap Screw 5/16-18 x 3/4	3
75	1721 989	Connector	1
76	1185 739	Elbow 90°	3
77	1721 922	Tube - (Filter Outflow to Hydro.)	1
78	1720 282	Motor Gasket	1
79	1118 808	Retaining Ring	1
80	1720 285	Bevel Pinion	1
81	1722 180	Hydrostatic Pkg. (Inc Ref 78)	1
82	1185 775	Cap Screw (Special)	4
83	1720 957	Fan Guard Top	1
84	1720 688	Fan Guard Bottom	1
85	1187 612	Lock Washer 1/4	4
86	1185 375	Cutting Screw 1/4-20 x 3/4	4
87	1719 367	Clevis Pin	2
88	1703 011	Cotter Pin	2
89	1106 930	Cap Screw 3/8-16 x 1-3/4	8
90	1713 461	Mounting Cap	4
91	1110 107	Self Locking Nut 5/16-18	2
92	1723 460	Bushing	2
93	1010 85	Hub Bolt	10
94	1110 110	Self Locking Nut 1/2-13	2
95	1118 802	Retaining Ring	1
96	1722 228	Speed Control Arm Ass'y.	1
97	1107 382	Flat Washer 5/16	4
98	1722 521	Wheel and Tire Ass'y. (99 - 101)	2
99	1723 389	Coil Spring	1
100	1185 820	Clamp	1
101	1723 976	Locking Arm	1
102	1185 218	Retaining Ring	1
103	1720 706	Bearing	1
104	1720 361	Thrust Washer	2
105	1721 897	Handle Grip	1
106	1723 404	Hydraulic Control Handle	1
107	1720 342	Pillow Block	1
108	1185 848	Nut #10-24	2
109	1100 115	Screw #10-24 x 1/2	2
110	1187 559	Shakeproof Washer	2
111	1724 108	Brake Arm	1

TRACTOR ASSEMBLY MODELS 1556-01, 02 AND 03

FIGURE 2 PARTS LIST CONTINUED

Ref. No.	Part No.	Description	No. Req'd
112	1723 405	Hydraulic Valve	1
	1721 620	Hydraulic Valve Seal, Spring & Gasket Repair Kit	1
113	1121 507	Hex Nut 1/4-20	2
114	1100 123	Screw 1/4-20 x 1-1/4	2
115	1185 839	Shakeproof Washer	2
116	1185 811	Drive Pin 3/32 x 1/2	1
117	1717 563	Connector	4
118	1719 179	Hose - Cylinder to Control Valve 19-1/2" Lg	1
119	1721 899	Hose Control Valve to Filter	1
120	1720 296	Hose - Control Valve to Cylinder 13-3/4" Lg	1
121	1720 294	Hose - Hydro. Pkg to Hydraulic Control Valve	1
122	1720 828	Extension Spring	2
123	1714 788	Hydraulic Cylinder Ass'y. (Inc 124 - 131)	1
124	1721 625	Cylinder Head	1
125	1721 626	"O" Ring	3
126	1721 627	Tube	1
127	1721 628	Washer	2
128	1721 629	Piston Rod	1
129	1721 630	Guide	1
130	1721 631	"O" Ring	1
131	1721 632	Clevis	1
132	1107 041	Cap Screw 1/2-13 x 2-3/4	1
133	1714 783	Spacer	1
134	1107 385	Flat Washer	1
135	1708 125	Clevis Pin 1/2 x 1-1/16	1
136	1100 349	Cotter Pin 1/8 x 3/4	1
137	1722 156	Brake Caliper Ass'y. (138 - 151) See Page 7 for Illustration	1
138	1719 558	Carrier - Solid Side	1
139	1719 560	Puck	2
140	1719 569	Rivet	4
141	1719 561	Carrier - Cam Side	1
142	1719 562	Washer	1
143	1722 155	Spring	2
144	1719 559	Spacer	2
145	1722 913	Actuating Cam	1

Ref. No.	Part No.	Description	No. Req'd
146	1719 563	Actuator	1
147	1719 567	Spring	1
148	1719 564	Washer	1
149	1719 565	Snap Ring	1
150	1111 688	Cap Screw 1/4-28 x 2	2
151	1100 241	Lock Washer 1/4	3
152	1722 083	Spring Bracket	1
153	1892 471	Extension Spring	1
154	1722 171	Pivot Block	1
155	1185 304	Retaining Ring	1
156	1723 366	Brake Arm	1
157	1100 078	Cap Screw 5/16-18 x 7/8	1
158	1723 365	Brake Rod	1
159	1100 346	Cotter Pin 3/32 x 3/4	2
160	1185 597	Drive Pin 3/16 x 1-1/8	1
161	1723 476	Brake Arm	1
162	1722 399	Brake Pedal	1
163	1719 539	Pedal Pad	1
164	1720 529	Thrust Washer	1
165	1720 114	Spacer	1
166	1185 732	Retaining Ring	1
167	1893 445	Washer	2
168	1104 435	Woodruff Key 1/8 x 5/8	1
169	1110 108	Lock Nut 3/8-16	1
170	1185 584	Cotter Pin 3/16 x 3/4	1
171	1723 364	Parking Brake Lock	1
172	1185 261	Dished Lock Washer 5/16	1
173	1723 972	Bushing - Sleeve	1
174	1720 523	Neutralizer Arm	2
175	1102 366	Socket Head Cap Screw	1
176	1121 509	Hex Nut 3/8-16	1
177	1107 381	Flat Washer 1/4	1
178	1723 513	Control Mount	1
179	1100 243	Lock Washer 3/8	13
180	1106 936	Cap Screw 3/8-16 x 2-1/2	2
181	1106 923	Cap Screw 3/8-16 x 1-1/4	1
182	1107 383	Flat Washer 3/8	3
183	1106 919	Cap Screw 3/8-16 x 1	2
184	1721 909	Control Mount Support	1
185	1110 106	Lock Nut 1/4-20	1
186	1106 832	Cap Screw 1/4-20 x 5/8	1
187	1723 974	Adjusting Bracket	1
188	1723 362	Locking Arm	1

TRACTOR ASSEMBLY MODELS 1556-01, 02 AND 03

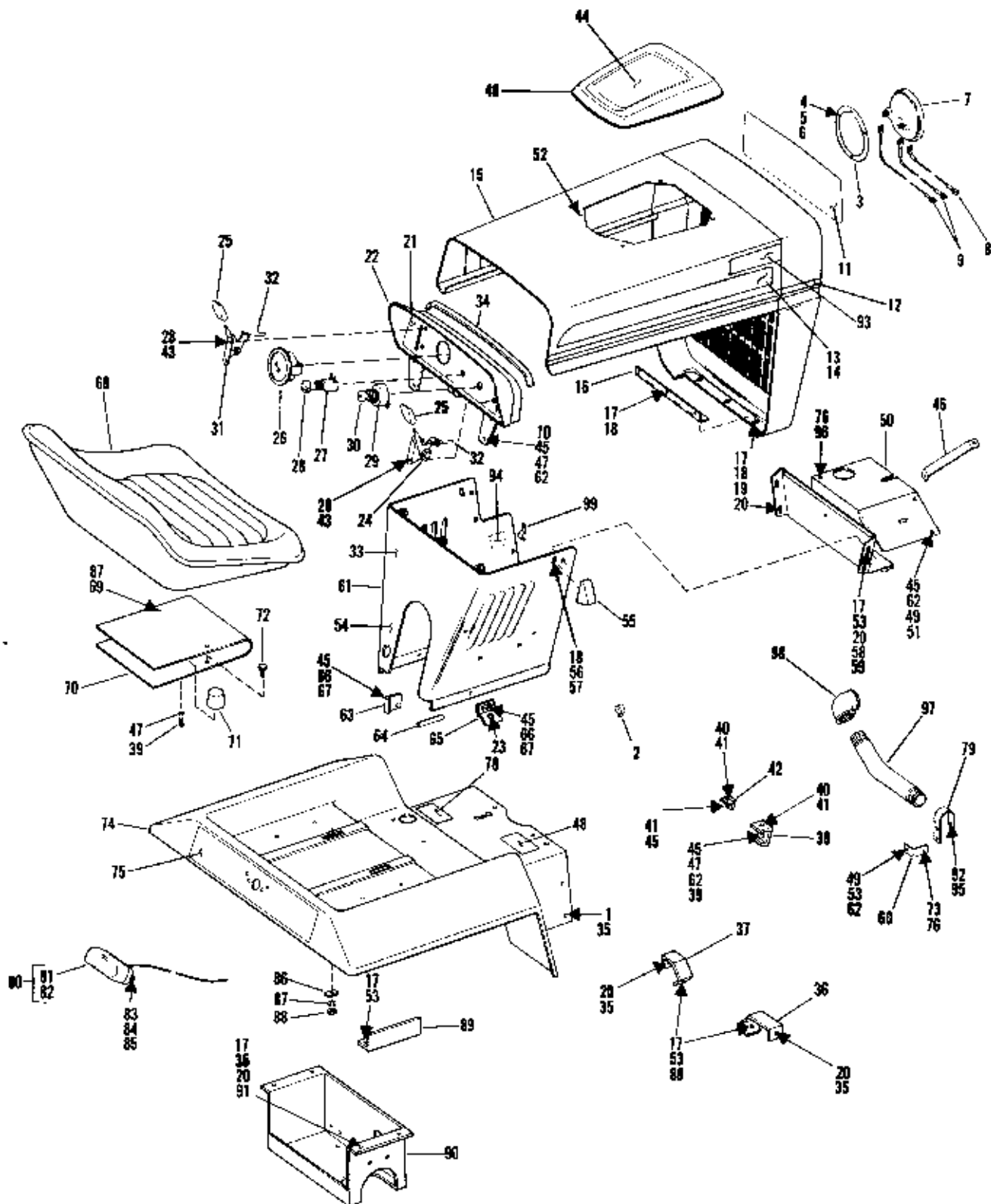


FIGURE 3

TRACTOR ASSEMBLY MODELS 1556-01, 02 AND 03

FIGURE 3 PARTS LIST

Ref. No.	Part No.	Description	No. Req'd
1	1185 498	Speed Nut 5/16-18	4
2	1894 391	Cable Clip	3
3	1719 708	Retaining Ring	2
4	1185 911	Rivet	6
5	1185 748	Wave Washer	6
6	1185 746	Ratchet Plate	6
7	*	Headlight (GE 4406)	2
8	1717 394	Lead Wire - Headlight	1
9	1717 370	Lead Wire - Headlight	2
10	1721 252	Wire Clip	2
11	1722 753	Decal Trade Mark	1
12	1717 859	Tapc Stripe 68" Lg	1
13	1722 825	Hood Decal LH	1
14	1722 824	Hood Decal RH	1
15	1723 585	Hood and Grill Ass'y w/o Decals	1
16	1717 246	Hinge	1
17	1100 242	Lock Washer 5/16-18	19
18	1106 872	Cap Screw 5/16-18 x 5/8	9
19	1107 382	Flat Washer 5/16	9
20	1110 107	Lock Nut 5/16-18	10
21	1723 508	Instrument Panel Decal	1
22	1723 391	Instrument Panel	1
23	1723 037	Cap Screw 3/8-16 x 3/4	2
24	1723 439	Choke (Inc 25 - 32)	1
25	1715 312	Knob Control Ass'y.	2
26	1714 146	Ammeter	1
27	1717 256	Light Switch (Inc 28)	1
28	1116 287	Screw #10-24 x 5/8	4
29	1722 275	Ignition Switch (Inc 30)	1
30	1718 266	Key Only	1
31	1723 440	Throttle Control Ass'y. (Inc 25 - 32)	1
32	1712 051	Wire Only	2
33	1723 509	Instruction Decal	1
34	1717 599	Pad	1
35	1185 872	Screw 5/16-18 x 5/8	10
36	1721 904	Fender Support RH	1
37	1721 903	Fender Support LH	1
38	1721 907	Fender Support	1
39	1106 830	Cap Screw 1/4-20 x 1/2	2
40	1185 894	Phillips Hd Scr 1/4-20 x 1/2	2
41	1185 893	Tinnerman Nut 1/4-20	3
42	1721 908	Fender Support	1
43	1185 985	Kep's Nut #10-24	4
44	1723 678	Decal (15 H. P.)	1
45	1107 381	Flat Washer 1/4	10
46	1723 581	Heat Shield Support	1
47	1100 241	Lock Washer	7
48	1724 065	Engine Cover	1
49	1106 832	Cap Screw 1/4-20 x 5/8	2
50	1723 484	Heat Shield	1

Ref. No.	Part No.	Description	No. Req'd
51	1187 612	Lock Washer 1/4	1
52	1186 009	Round Head Screw	4
53	1106 874	Cap Screw 5/16-18 x 3/4	8
54	1723 532	Decal - Hydro Lift	1
55	1717 232	Latch	2
56	1713 233	Flat Washer 5/16 Special	6
57	1185 261	Dished Lock Washer 5/16	2
58	1107 383	Flat Washer 3/8	2
59	1177 548	Shakeproof Washer 5/16	1
60	1723 659	Bracket - Throttle Wire	1
61	1723 399	Rear Panel	1
62	1121 507	Hex Nut 1/4-20	8
63	1721 913	Clip	1
64	1177 550	Drive Pin 5/16 x 2-1/2	1
65	1714 642	Brace	4
66	1115 931	Mach. Screw 1/4-20 x 5/8	3
67	1185 456	Tinnerman Nut 1/4	3
68	1723 525	Seat	1
69	1106 915	H. H. Cap Screw 3/8-16 x 3/4	2
70	1722 930	Seat Spring	1
71	1722 929	Bumper	1
72	1106 917	H. H. Cap Screw 3/8-16 x 7/8	2
73	1185 987	Round Head Screw	1
74	1723 445	Fender	1
75	1721 889	Decal (Reflector)	1
76	1187 559	Shakeproof Washer #10	1
78	1723 507	Park - Lock Decal	1
79	1723 527	Support - Exhaust Manifold	1
80	1805 342	Tail Light Ass'y (Inc 81 and 82)	1
81	*	Bulb (GE 1895)	1
82	1805 110	Lens Only	1
83	1116 197	Mach. Screw #6-32 x 1/2	2
84	1109 764	Hex Nut #6-32	2
85	1103 989	Lock Washer #6	2
86	1721 876	Reinforcing Plate	2
87	1100 243	Lock Washer 3/8	4
88	1110 108	Lock Nut 3/8-18	4
89	1722 107	Divider	1
90	1721 892	Fender Support	1
91	1704 930	Clamp	1
92	1106 849	H. H. Cap Screw 1/4-20 x 1-3/4	1
93	1722 764	Decal - Bolens	2
94	1723 102	Decal - Brake Pedal	1
95	1110 106	Lock Nut 1/4-20	1
96	1187 429	Self Tapping Screw	2
97	1723 528	Exhaust Manifold	1
98	1721 270	Elbow 90°	1
99	1721 037	Clip	1

* Not stocked. Purchase from your local automotive or electrical supplier.

TRACTOR ASSEMBLY MODELS 1556-01, 02 AND 03

ELECTRICAL GROUP AND COMPONENT PARTS

FIGURE 4

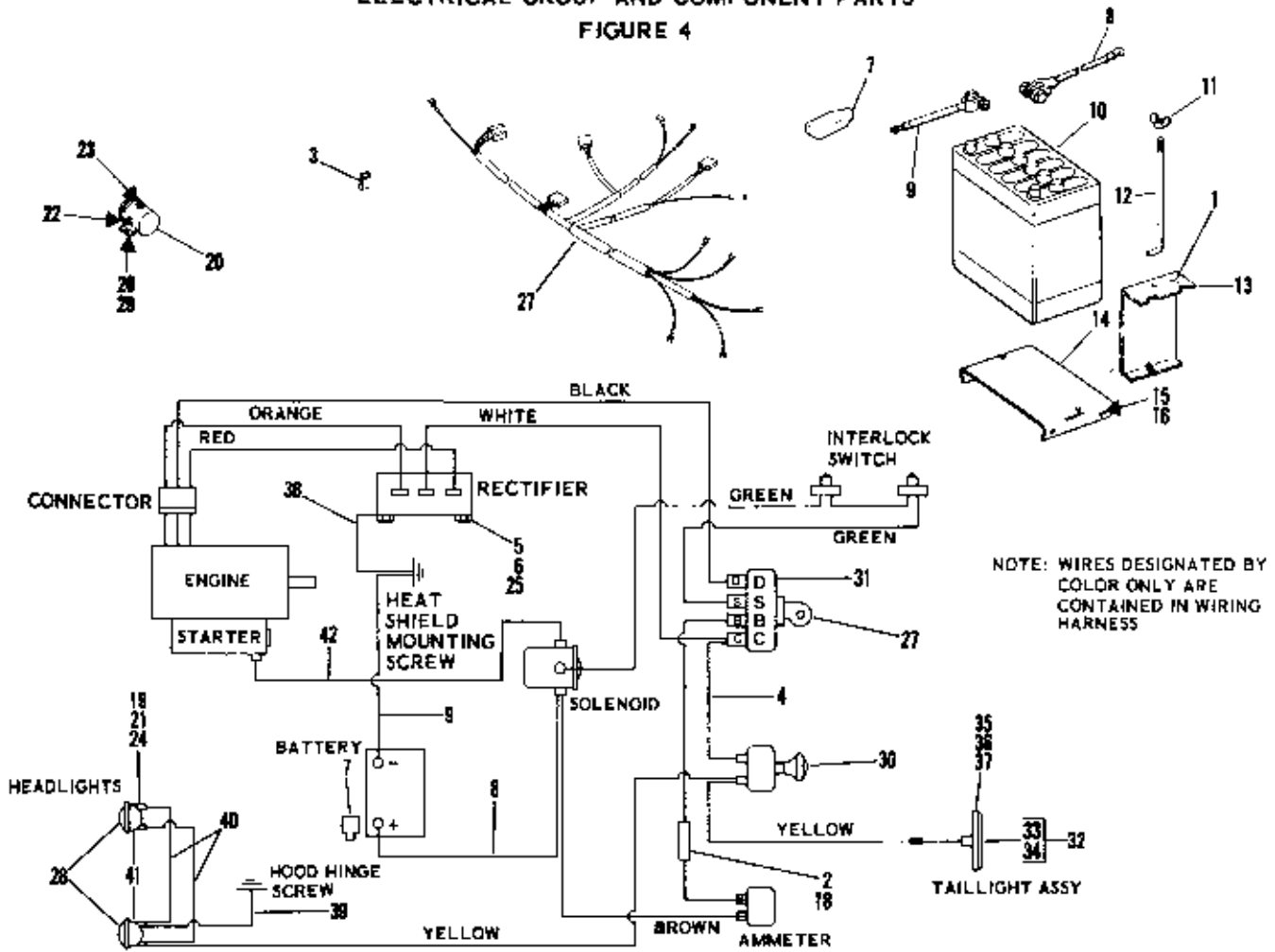


FIGURE 4 PARTS LIST

Ref. No.	Part No.	Description	No. Req'd
1	1724 056	Decal (Battery Instruction)	1
2	1722 088	Fuse Holder	1
3	1721 037	Clip	1
4	1722 063	Wire - Lead	1
5	1115 935	Phillips Screw 1/4-20 x 3/4	2
6	1121 507	Hex Nut 1/4-20	2
7	1721 413	Battery Terminal Boot	1
8	1721 510	Battery Lead (Positive)	1
9	1716 636	Battery Lead (Ground)	1
10	1718 027	Battery 12V 45 Amp	1
11	1709 652	Wing Nut 1/4-20	2
12	1718 108	Battery Clamp Rod	2
13	1720 538	Battery Clamp	2
14	1718 111	Battery Carrier	1
15	1185 872	Truss Hd Scr 5/16-18 x 5/8	4
16	1185 873	Timmerman Nut 5/16-18	4
17	1723 526	Wiring Harness	1
18	1720 970	Fuse 20 Amp	1
19	1185 748	Wave Washer	6
20	1717 048	Solenoid	1
21	1185 911	Rivet	6

Ref. No.	Part No.	Description	No. Req'd
22	1182 563	Hex Nut 5/16-18	2
23	1109 845	Hex Nut 10-32	1
24	1185 746	Ratchet Plate	6
25	1100 241	Lock Washer 1/4	2
26	1185 987	Rd. Hd. Screw	2
27	1718 266	Key Only	1
28	*	Headlight Bulb (GE 4406)	2
29	1185 986	Speed Nut	2
30	1717 256	Light Switch	1
31	1722 275	Ignition Switch (Inc Ref 27)	1
32	1805 342	Tail Light Ass'y. (Inc 33 & 34)	1
33	*	Bulb (GE 1895)	1
34	1805 110	Lens Only	1
35	1103 989	Lock Washer #6	2
36	1109 784	Nut #6-32	2
37	1116 197	Screw #6-32 x 1/2	2
38	1719 511	Wire - Lead	1
39	1717 394	Lead - Headlight	1
40	1717 370	Lead - Headlight	2
41	1719 708	Retaining Ring	2
42	1723 708	Wire - Lead	1

* Not stocked. Purchase from your local automotive or electrical supplier.