

BOLENS

HUSKY
TRACTOR
MODELS 1253-01
1253-02

ILLUSTRATED PARTS CATALOG



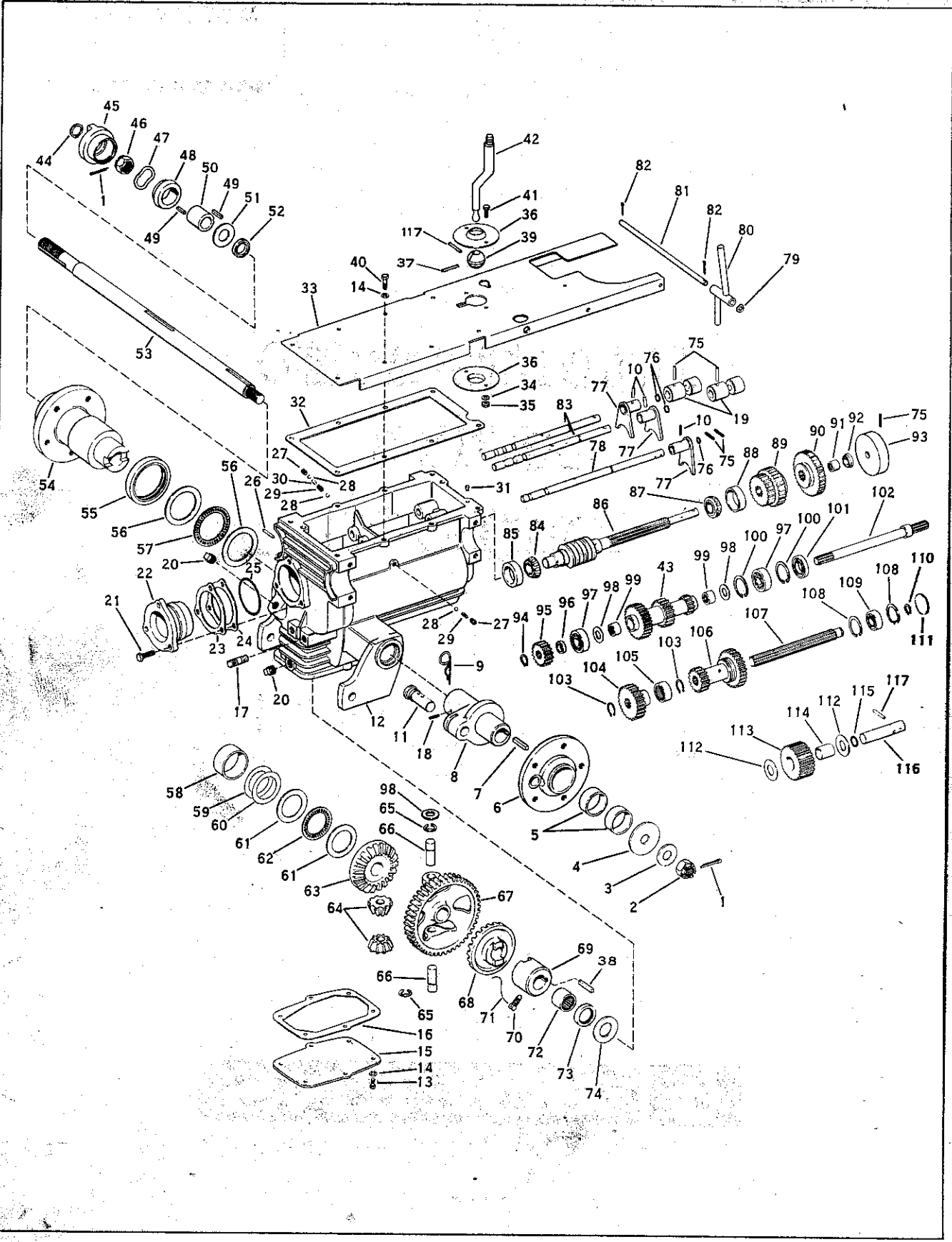
BOLENS

PORT WASHINGTON, WISCONSIN, U.S.A.

PRINTED IN U.S.A.

FORM NO. P-552168 11/69

TRANSMISSION ASSEMBLY MODELS 1253-01 AND 1253-02
ASSEMBLY PART NO. 1716736

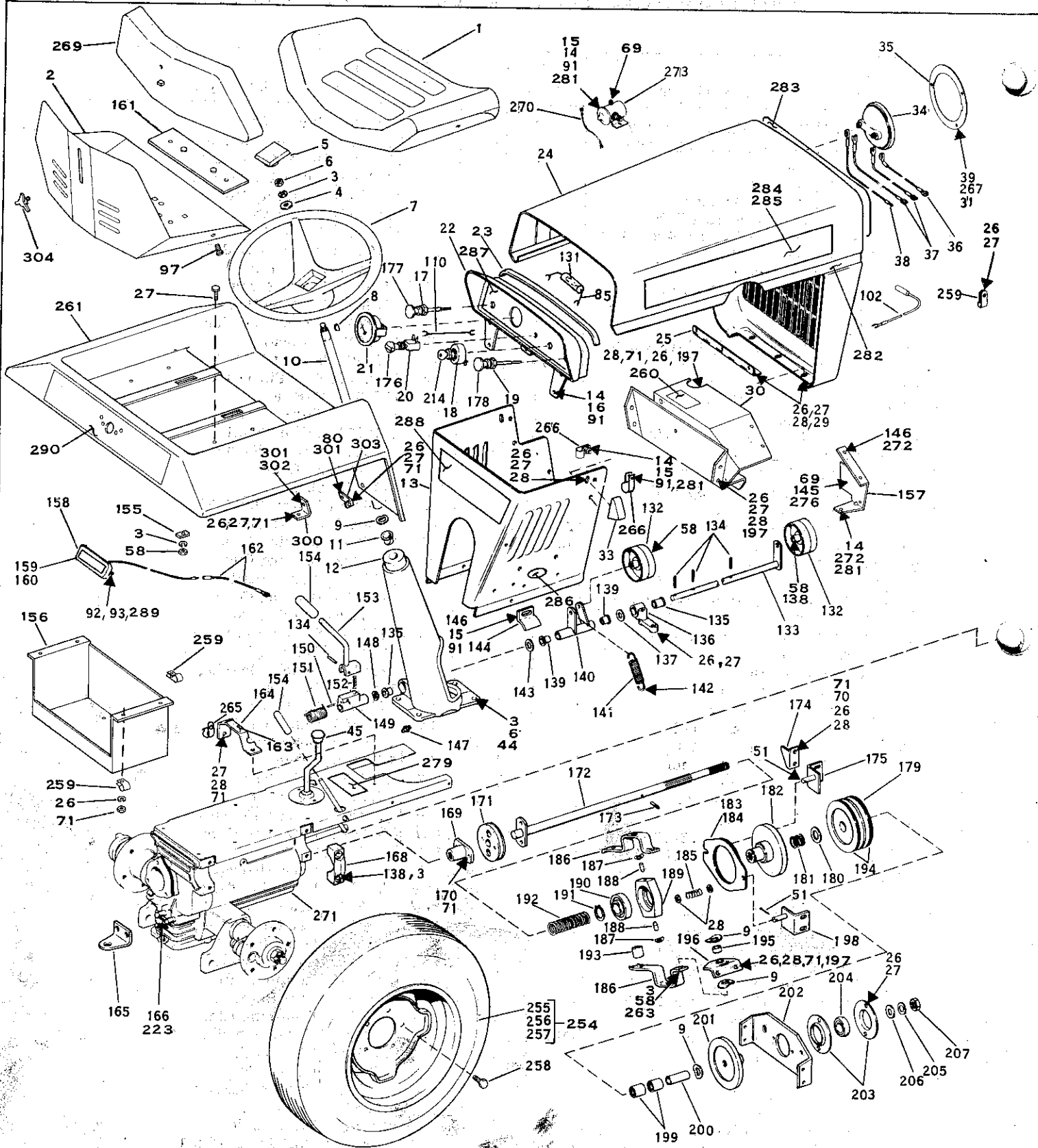


TRANSMISSION ASSEMBLY MODELS 1253-01 AND 1253-02

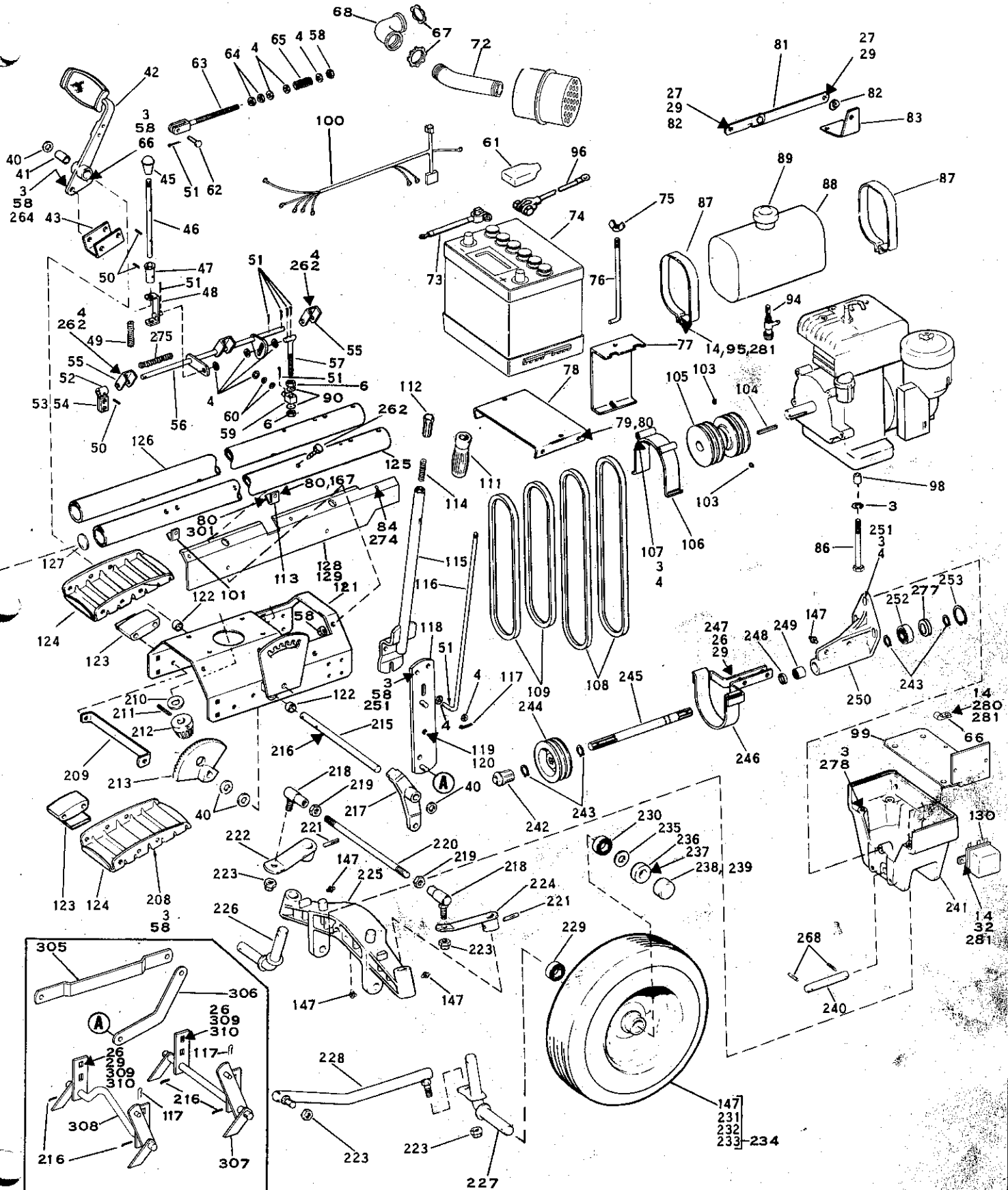
Ref. No.	Part No.	Description	No. Req'd.	Ref. No.	Part No.	Description	No. Req'd.
1	1100352	Cotter Pin 1/8 x 1-1/2	2	61	1185638	Thrust Race	2
2	1109653	Castle Nut 3/4-16 UNF	1	62	1185639	Thrust Bearing	1
3	1707410	Washer	1	63	1716501	Bevel Gear 22T	1
4	1716502	Washer	1	64	1713466	Bevel Pinion 10T	2
5	1185646	Bronze Bearing	2	65	1177567	Retaining Ring	2
6	1716509	Free Wheeling Hub	1	66	1713467	Pinion Shaft	2
7	1104337	Sq. Key 1/4 x 1/4 x 1-1/2	1	67	1716513	Worm Wheel	1
8	1716506	Drive Collar	1	68	1716689	Bevel Gear 22T	1
9	1185590	Hitch Pin	1	69	1716503	Drive Hub	1
10	1703066	Roll Pin 1/8 x 3/4	3	70	1716519	Drive Screw	2
11	1713426	Lock Pin	1	71	1716692	Locking Wire	1
12	1716517	Gear Case	1	72	1185645	Needle Bearing	1
13	1106872	Capscrew 5/16-18 x 5/8	6	73	1185642	Oil Seal	1
14	1100242	Lockwasher 5/16	14	74	1716504	Thrust Washer	1
15	1713428	Bottom Cover	1	75	1704692	Roll Pin 1/8 x 1	5
16	1713427	Bottom Gasket	1	76	1177388	O-Ring	3
17	1718067	Stud	2	77	1716489	Shifter Arm	3
18	1185409	Drive Pin 1/4 x 5/8	1	78	1716514	Shifter Shaft	1
19	1713422	Connector	2	*79	1703616	Bowed Washer	1
20	1105678	Plug 3/8 N. P. T.	2	*80	1722003	Shift Lever	1
21	1185637	Capscrew - Special	3	*81	1716530	Shaft	1
22	1716497	Bearing Cap	1	*82	1100346	Cotter Pin 3/32 x 3/4	2
23	1716493	Shim .0125	As Req.	83	1713424	Shifter Shaft	2
24	1716494	Shim .005	As Req.	84	1185201	Bearing Cone	1
25	1185636	O-Ring	1	85	1185202	Bearing Cup	1
26	1120209	Roll Pin 3/16 x 3/4	1	86	1713408	Worm Shaft	1
27	1185342	Set Screw 5/16-18 x 3/8	2	87	1185275	Bearing Cone	1
28	1713416	Ball	3	88	1185276	Bearing Cup	1
29	1713417	Compression Spring	2	89	1713439	Sliding Gear	1
30	1713421	Pin	1	90	1713409	Gear 38T	1
31	182682	Breather	1	91	1185165	Needle Bearing	1
32	1713429	Top Gasket	1	92	1891820	Oil Seal	1
*33	1722002	Cover Plate	1	93	1713597	Brake Drum	1
*34	1100241	Lockwasher 1/4	2	94	1185668	Retaining Ring	1
*35	1121507	Hex Nut 1/4-20	2	95	1716490	Gear 19T	1
*36	1713455	Bearing Retainer	2	96	1716495	Spacer	1
*37	1110181	Dowel Pin	2	97	1185634	Ball Bearing	2
38	1703053	Square Key 1/4	1	98	1712763	Washer	6
*39	1713423	Pivot Ball	1	99	1185074	Needle Bearing	2
*40	1106876	Capscrew 5/16-18 x 7/8	8	100	1700012	Retaining Ring	2
*41	1106832	Capscrew 1/4-20 x 5/8	2	101	1185633	Oil Seal	1
*42	1722005	Shift Lever	1	102	1717125	Input Shaft	1
43	1716477	Gear & Shaft	1	103	1113527	Retaining Ring	2
44	1180025	Retaining Ring	1	104	1716491	Gear 28T	1
45	1714564	Adjusting Nut	1	105	1185635	Needle Bearing	1
46	1120129	Hex Nut 1-14 UNF	1	106	1716480	Gear & Shaft	1
47	1714572	Spring Washer	4	107	1716492	Splined Shaft	1
48	1714562	Drive Cone	1	108	1118723	Retaining Ring	2
49	1104336	Sq. Key 1/4 x 1/4 x 1	2	109	1104439	Ball Bearing	1
50	1714561	Coupling	1	110	1118807	Retaining Ring	1
51	1713468	Thrust Washer	1	111	1200029	Expansion Plug	1
52	1185295	Oil Seal	1	112	1707546	Flat Washer	2
53	1716507	Axle	1	113	1713412	Gear 28T	1
54	1716511	Wheel Hub	1	114	1185113	Bronze Bearing	1
55	1185643	Oil Seal	1	115	1185360	O-Ring	1
56	1185640	Thrust Race	2	116	1713419	Idler Shaft	1
57	1185641	Thrust Bearing	1	117	1185232	Roll Pin 3/16 x 1-1/4	2
58	1185644	Bronze Bearing	1				
59	1716498	Shim .0125"	As Req.				
60	1716499	Shim .005"	As Req.				

*Indicates Parts Not Included With Gear Case Assembly Part No. 1716736.

TRACTOR ASSEMBLY MODELS 1253-01 AND 1253-02



TRACTOR ASSEMBLY MODELS 1253-01 AND 1253-02



MODEL 1253-02 ONLY

TRACTOR ASSEMBLY MODELS 1253-01 AND 1253-02

Ref. No.	Part No.	Description	No. Req'd
1	1721 881	Seat Cushion	1
2	1721 880	Seat, Pan	1
3	1100 243	Lockwasher 3/8	40
4	1107 383	Flat Washer 3/8	21
5	1721 804	Cap	1
6	1121 509	Hex Nut 3/8-16	7
7	1721 805	Steering Wheel	1
8	1104 436	Woodruff Key 3/16 x 3/4	1
9	1713 122	Bowed Washer	4
10	1717 269	Steering Shaft	1
11	1717 263	Bearing	1
12	1717 258	Steering Support	1
13	1722 082	Rear Panel	1
14	1100 241	Lockwasher 1/4	16
15	1115 931	Phillips Screw 1/4-20 x 5/8	2
16	1121 507	Hex Nut 1/4-20	5
17	1722 105	Choke Assy (Inc 177)	1
18	1722 275	Ignition Switch (Inc 214)	1
19	1722 106	Throttle Control (Inc 178)	1
20	1717 256	Light Switch (Inc 176)	1
21	1714 146	Ammeter	1
22	1717 249	Instrument Panel	1
23	1717 599	Pad	1
24	1717 220	Hood & Grill Assy w/o Decals	1
25	1717 246	Hinge	1
26	1100 242	Lockwasher 5/16	40
27	1106 872	Capscrew 5/16-18 x 5/8	26
28	1107 382	Flat Washer 5/16	23
29	1182 563	Hex Nut 5/16-18	11
30	1722 061	Heat Shield	1
31	1185 746	Spring Clip	1
32	1115 935	Phillips Screw 1/4-20 x 3/4	2
33	1717 232	Latch	2
34	*	Headlight (GE4406)	2
35	1719 708	Retaining Ring	2
36	1717 394	Lead Wire, Headlight	1
37	1717 370	Lead Wire, Headlight	2
38	1717 369	Lead Wire, Headlight	1
39	1185 807	Rivet, Semi Tub. 3/16 x 7/8	6
40	1705 092	Washer	4
41	1185 582	Sleeve Bearing	1
42	1717 372	Clutch Pedal	1
43	1717 268	Lug	1
44	1106 923	Capscrew 3/8-16 x 1-1/4	4
45	1715 546	Knob	2
46	1716 717	Parking Brake Rod	1
47	1716 718	Parking Brake Stop	1
48	1716 716	Bracket Spring	1
49	1716 724	Spring	1
50	1703 066	Roll Pin 1/8 x 3/4	3
51	1100 346	Cotter Pin 3/32 x 3/4	11
52	1713 780	Brk Shoe Assy (Inc 53 & 54)	1
53	1713 777	Lining Only	1
54	1185 570	Rivet	2
55	1713 772	Bracket, Brake Rod	2
56	1716 723	Brake Rod	1
57	1716 719	Brake Rod	1
58	1110 108	Lock Nut 3/8-16	22
59	1714 663	Pivot Block	1
60	1703 616	Bowed Washer	2
61	1721 413	Battery Terminal Cover	1
62	1112 587	Clevis Pin - 3/8	1
63	1716 582	Clutch Rod	1
64	1121 551	Lock Nut 3/8-16	2
65	1714 655	Spring	1
66	1117 713	Flat Screw 3/8-16 x 1	1
67	1721 036	Lock Nut 1" NPT	3

Ref. No.	Part No.	Description	No. Req'd
68	1721 270	Elbow 90°	1
69	1109 845	Hex Nut #10-32	2
70	1106 878	Capscrew 5/16-18 x 1	4
71	1110 107	Lock Nut 5/16-18	22
72	1722 103	Exhaust Pipe	1
73	1716 636	Lead Assy BATT. (Ground)	1
74	1718 027	Battery 12 Volt -45 AMP	1
75	1709 652	Wing Nut 1/4-20	2
76	1718 108	Clamp Rod	2
77	1720 538	Clamp	2
78	1718 111	Carrier Battery	1
79	1118 378	Screw 5/16-18 x 1/2	4
80	1185 498	Speed Nut 5/16-18	4
81	1717 236	Hood Stop	1
82	1705 905	Bowed Washer	2
83	1722 153	Bracket	1
84	1185 211	Self Tap Screw 1/4-20 x 1/2	6
85	1722 088	Lead Wire, Ammeter to IGN Switch (Inc 131)	1
86	1111 615	Capscrew 3/8-16 x 3-1/2 H. T.	4
87	1714 685	Tank Strap	2
88	1714 767	Tank (Inc 89)	1
89	1714 766	Cap Only	1
90	1103 995	Shake Proof Washer 3/8	2
91	1107 381	Flat Washer 1/4	11
92	1109 764	Nut #6-32	2
93	1103 989	Lockwasher #6	2
94	1718 029	Tank Outlet	1
95	1114 474	Fil. Screw 1/4-20 x 1-1/2	2
96	1722 108	Battery to Solenoid	1
97	1185 870	Sems Screw 1/4-20 x 1/2	3
98	1714 648	Spacer	4
99	1722 101	Cover Plate	1
100	1722 062	Wiring Harness (See page 8)	1
101	1722 019	Support Bracket (rear)	2
102	1721 018	Lead Wire, Light Switch to Headlight Wire	1
103	1103 470	Set Screw 5/16-18 x 1/2	2
104	1187 474	Sq. Key 1/4 x 2-1/4	1
105	1716 592	Engine Pulley	1
106	1716 642	Belt Guide	2
107	1106 936	Capscrew-3/8-16 x 2-1/2	2
108	1716 570	Belt 42-1/2" Set of 2 PTO	1
109	1716 571	Belt 34" Matched Set of 2	1
110	1722 063	Light Switch to IGN Switch	1
111	1715 575	Grip Tool Lift	1
112	1714 644	Plunger Tool Lift	1
113	1722 018	Support Bracket Front	2
114	1713 075	Spring Tool Lift	1
115	1714 577	Tool Lift Lever	1
116	1714 645	Rod Tool Lift	1
117	1703 011	Spring Cotter	3
118	1714 575	Tool Lift	1
119	1107 035	Capscrew 1/2-13 x 2	1
120	1185 496	Jam Nut 1/2-13	1
121	1717 315	Mounting Plate	1
122	1185 558	Sleeve Bearing	2
123	1713 474	Spacer	2
124	1713 483	Foot Rest	2
125	1722 014	Frame Tube RH	1
126	1722 015	Frame Tube LH	1
127	1711 380	Expansion Plug	2
128	1722 040	Side Panel R. H.	1
129	1722 041	Side Panel L. H.	1
130	**	Rectifier Regulator	1
131	1720 976	Fuse 20 AMP	1

TRACTOR ASSEMBLY MODELS 1253-01 AND 1253-02 (CONT.)

Ref. No.	Part No.	Description	No. Req'd	Ref. No.	Part No.	Description	No. Req'd
132	1716 584	Idler Pulley	2	196	1714 656	Yoke Support	1
133	1716 615	Control Shaft	1	197	1106 874	Capscrew 5/16-18 x 3/4	6
134	1704 692	Roll Pin 1/8 x 1	4	198	1716 637	Brake Bracket RH	1
135	1185 647	Bearing, Nylon	2	199	1185 471	Needle Bearing	2
136	1716 590	Shaft Support	1	200	1717 238	Spacer	1
137	1107 385	Flat Washer 1/2	1	201	1716 598	Clutch Flange	1
138	1106 930	Capscrew 3/8-16 x 1-3/4	10	202	1717 293	Bearing Support	1
139	1715 538	Flanged Bushing	2	203	1185 588	Bearing Flange	2
140	1716 576	Idler Arm	1	204	1185 587	Self Aligning Bearing	1
141	1716 728	Spring Extension	1	205	1100 246	Lockwasher 9/16	1
142	1185 584	Cotter Pin 3/16 x 3/4	1	206	1185 023	Flat Washer 9/16	1
143	1890 234	Flat Washer 1/2	1	207	1110 153	Lock Nut 9/16-18	1
144	1714 642	Brace	2	208	1106 940	Capscrew 3/8-16 x 3	4
145	1114 748	Mach Screw #10-32 x 1/2	1	209	1713 397	Support Bar	1
146	1185 456	Tinnerman Nut	2	210	1708 012	Flat Washer	1
147	1104 954	Grease Fitting	7	211	1185 284	Drive Pin 1/4 x 2	1
148	1706 782	Bowed Washer	1	212	1713 811	Steering Pinion	1
149	1715 679	PTO Pivot (Inc 150)	1	213	1713 809	Steering Gear	1
150	1120 210	Roll Pin 3/16 x 1	1	214	1718 266	Key (Indak Switch)	1
151	1715 680	Spring	1		1719 295	Key (Cole Hersee Switch)	1
152	1713 391	Spring	1	215	1714 840	Cross Shaft	1
153	1722 013	Control Lever PTO	1	216	1100 350	Cotter Pin 1/8 x 1	6
154	1721 896	Grip	2	217	1716 563	Steering Arm	1
155	1721 876	Reinforcing Plate	2	218	1713 361	Ball Joint	2
156	1721 893	Fender Support	1	219	1103 926	Jam Nut 1/2-20	2
157	1722 102	Heat Deflector	1	220	1713 385	Tie Rod	1
158	1805 342	Taillight Assy (Inc 159&160)	1	221	1891 696	Drive Pin 5/16 x 1-1/2	2
159	*	Bulb (GE1895)	1	222	1713 377	Steering Lever LH	1
160	1805 110	Lens Only	1	223	1110 152	Self Locking Nut 1/2-20	5
161	1721 879	Seat Bracket	1	224	1713 378	Steering Lever RH	1
162	1718 020	Lead Wire, Taillight to Light Switch	1	225	1716 697	Axle	1
163	1721 072	Decal (PTO Drive)	1	226	1716 953	Spindle LH	1
164	1713 472	Quadrant - PTO	1	227	1716 952	Spindle RH	1
165	1714 101	Hitch	1	228	1717 462	Drag Link	1
166	1100 245	Lockwasher 1/2	2	229	1185 616	Ball Bearing	2
167	1106 870	Capscrew 5/16-18 x 1/2	4	230	1185 615	Ball Bearing	2
168	1713 461	Mounting Cap	4	231	1715 855	Valve Stem Assembly	2
169	1716 585	Coupling Drive Shaft	1	232	1715 789	Wheel Only, (Inc 231 & 147)	2
170	1140 818	Set Screw 5/16-18 x 3/4	4	233	1717 441	Tire 16 x 6:50 x 8	2
171	1716 561	Bonded Coupling	1	234	1717 357	Wheel & Tire (229-233) Front	2
172	1717 243	Drive Shaft	1	235	1218 98	Washer	4
173	1713 432	Drive Pin 3/16 x 1-1/4	1	236	1716 197	Set Collar	2
174	1716 586	Clutch Stop	1	237	1187 857	Capscrew 1/4-20 x 1	2
175	1716 638	Brake Bracket LH	1	238	1715 899	Dust Cap, 1-1/2 I.D. (Some models)	2
176	1718 231	Light Switch Knob Only	1	239	1721 245	Dust Cap, 1-5/8 I.D.	2
177	1721 183	Choke Knob & Wire Only	1	240	1713 383	Axle Pivot	1
178	1721 182	Throttle Knob & Wire Only	1	241	1717 270	Axle Support	1
179	1717 240	Pulley Assy (Inc 194)	1	242	1714 132	Rubber Tip	1
180	1185 432	Thrust Race	1	243	1185 649	Retaining Ring	4
181	1716 583	Spring	1	244	1716 594	Pulley PTO	1
182	1716 596	Clutch Flange	1	245	1721 597	Shaft PTO (Inc 277)	1
183	1716 618	Brake Plate Assy (Inc 184)	1	246	1716 647	Belt Guide PTO	1
184	1716 599	Friction Disc Only	1	247	1106 880	Capscrew 5/16-18 x 1-1/8	2
185	1713 167	Compression Spring	2	248	1185 224	Oil Seal	1
186	1714 666	Clutch Yoke	2	249	1185 010	Needle Bearing	1
187	1219 00	Bowed Washer	AR	250	1715 785	Support Housing	1
188	1110 202	Dowel Pin	2	251	1106 921	Capscrew 3/8-16 x 1-1/8	5
189	1714 639	Bearing Retainer	1	252	1185 605	Ball Bearing	1
190	1704 479	Ball Bearing	1	253	1118 730	Retaining Ring	1
191	1113 526	Retaining Ring	1	254	1715 866	Wheel & Tire Assembly (Inc 255, 256, 257)	2
192	1714 649	Spring	1	255	1715 787	Wheel Only	2
193	1714 665	Spacer	1	256	1715 856	Tubeless Tire 23 x 8:50-12	2
194	1716 599	Friction Disc	2	257	1716 011	Valve Stem Assembly	2
195	1714 664	Spacer	1				

*Not stocked. Purchase from your local automotive or electrical supplier.

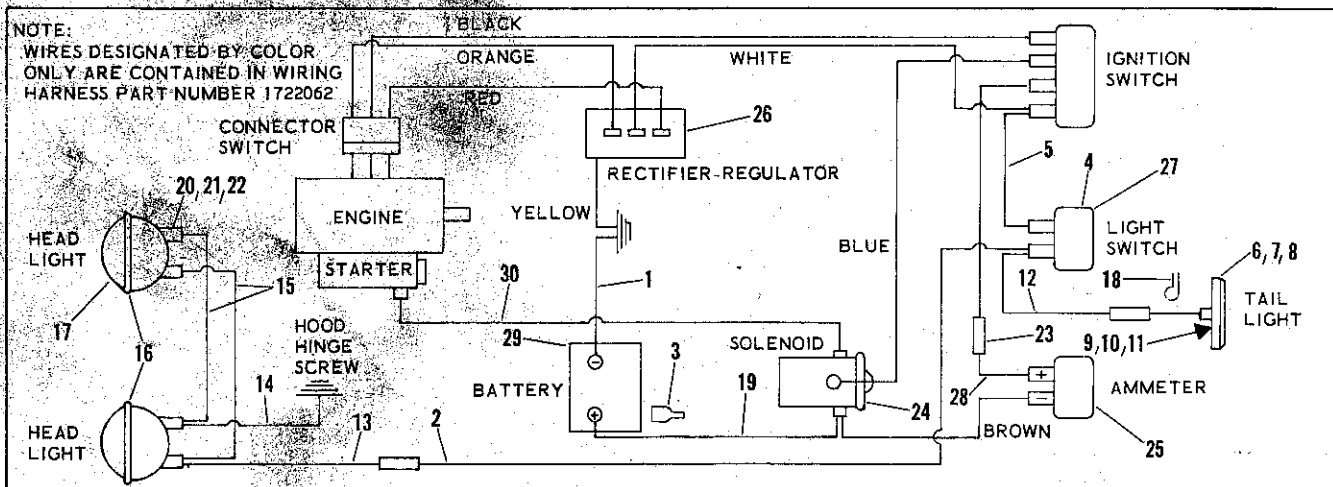
**Not stocked. Purchase from your local Tecumseh Products Co, Lauson-Power Products Parts Outlet.

TRACTOR ASSEMBLY MODELS 1253-01 AND 1253-02 (CONT.)

Ref. No.	Part No.	Description	No. Req'd
258	1010 85	Hub Bolt	10
259	1704 930	Wire Clamp	3
260	1721 249	Decal (warning)	1
261	1721 846	Fender	1
262	1106 938	Capscrew 3/8-16 x 2-3/4	7
263	1106 927	Capscrew 3/8-16 x 1-1/2	2
264	1106 919	Screw Flat Hd 3/8-16 x 1	1
265	1719 514	Open Tube Clip	2
266	1721 037	Wire Clip	5
267	1185 748	Wave Washer	6
268	1185 232	Drive Pin 3/16 x 1-1/4	2
269	1721 882	Back Rest Cushion	1
270	1722 109	Lead Solenoid to Starter	1
271	1716 736	Gear Case Assembly	1
272	1106 830	Screw 1/4-20 x 1/2	3
273	1717 048	Solenoid	1
274	1187 612	Shake Proof 1/4	6
275	1721 253	Torsion Spring	1
276	1100 240	Lockwasher #10	1
277	1721 590	Seal Washer	1
278	1111 614	Capscrew 3/8-16 x 3 H. T.	4
279	1721 069	Decal (Shift Pwr Rng Brk)	1

Ref. No.	Part No.	Description	No. Req'd
280	1115 931	Phill Screw 1/4-20 x 5/8	8
281	1110 106	Lock Nut 1/4-20	11
282	1717 859	Tape Strip 68" LG	1
283	1721 386	Decal (Trade Mark)	1
284	1722 044	Decal (Hood RH)	1
285	1722 045	Decal (Hood LH)	1
286	1721 657	Decal (6 Speed)	1
287	1721 075	Decal (Instrument Panel)	1
288	1721 272	Decal (Instruction)	1
289	1116 197	Mach Screw #6-32 x 1/2	2
290	1721 889	Decal (Reflector)	1
300	1722 016	Fender Support Bracket	2
301	1185 875	Truss HD Scr5/16-18 x 3/8	10
302	1185 873	Speed Nut 5/16-18	4
303	1722 017	Fender Support	2
304	1721 883	Knob	1
305	1720 480	Link (1253-02 only)	1
306	1720 479	Control Link (1253-02 only)	1
307	1720 492	Lift Arm Frt (1253-02 only)	1
308	1720 493	Lift Arm Rear (1253-02 only)	1
309	1100 255	Flat Washer 5/16	8
310	1106 876	Capscrew 5/16-18 x 7/8	8

DUAL LIGHT GROUP - WIRING DIAGRAM



Ref. No.	Part No.	Description	No. Req'd
1	1716 636	Lead Assembly (Ground)	1
2	1721 018	Lead Wire Switch to Headlight Wire	1
3	1721 413	Term. Boot	1
4	1717 256	Light Switch	1
5	1722 063	Lead (Light Sw to IGN Sw)	1
6	1805 342	Taillight Assy (Inc 7 & 8)	1
7	*	Bulb (GE1895)	1
8	1805 110	Lens Only	1
9	1103 989	Lockwasher #6	2
10	1109 764	Nut #6-32	2
11	1116 197	Screw #6-32 x 1/2	2
12	1718 020	Lead, Switch to Taillight	1
13	1717 369	Lead Headlight	1
14	1717 394	Lead Headlight	1
15	1717 370	Lead Headlight	2
16	1719 708	Retaining Ring	2

Ref. No.	Part No.	Description	No. Req'd
17	*	Headlight Bulb (GE4406)	2
18	1704 930	Wire Clamp	3
19	1722 108	Battery Lead	1
20	1185 746	Spring Clip	6
21	1185 807	Rivet, Semi Tubular 3/16 x 7/8	6
22	1185 748	Wave Washer	6
23	1720 976	Fuse 20 AMP	1
24	1717 048	Solenoid	1
25	1714 146	Ammeter	1
26	**	Rectifier Regulator	1
27	1722 275	Ignition Switch	1
28	1722 088	Lead Wire, Ammeter to IGN Switch	1
29	1718 027	BATT. 12V-45 AMP	1
30	1722 109	Lead Wire, Sol. to Starter	1

* Not stocked. Purchase from your local automotive or electrical supplier.

** Not stocked. Purchase from your local Tecumseh Products Co, Lauson-Power Products Parts Outlet.