

BOLENS 54 INCH MOWER ATTACHMENT

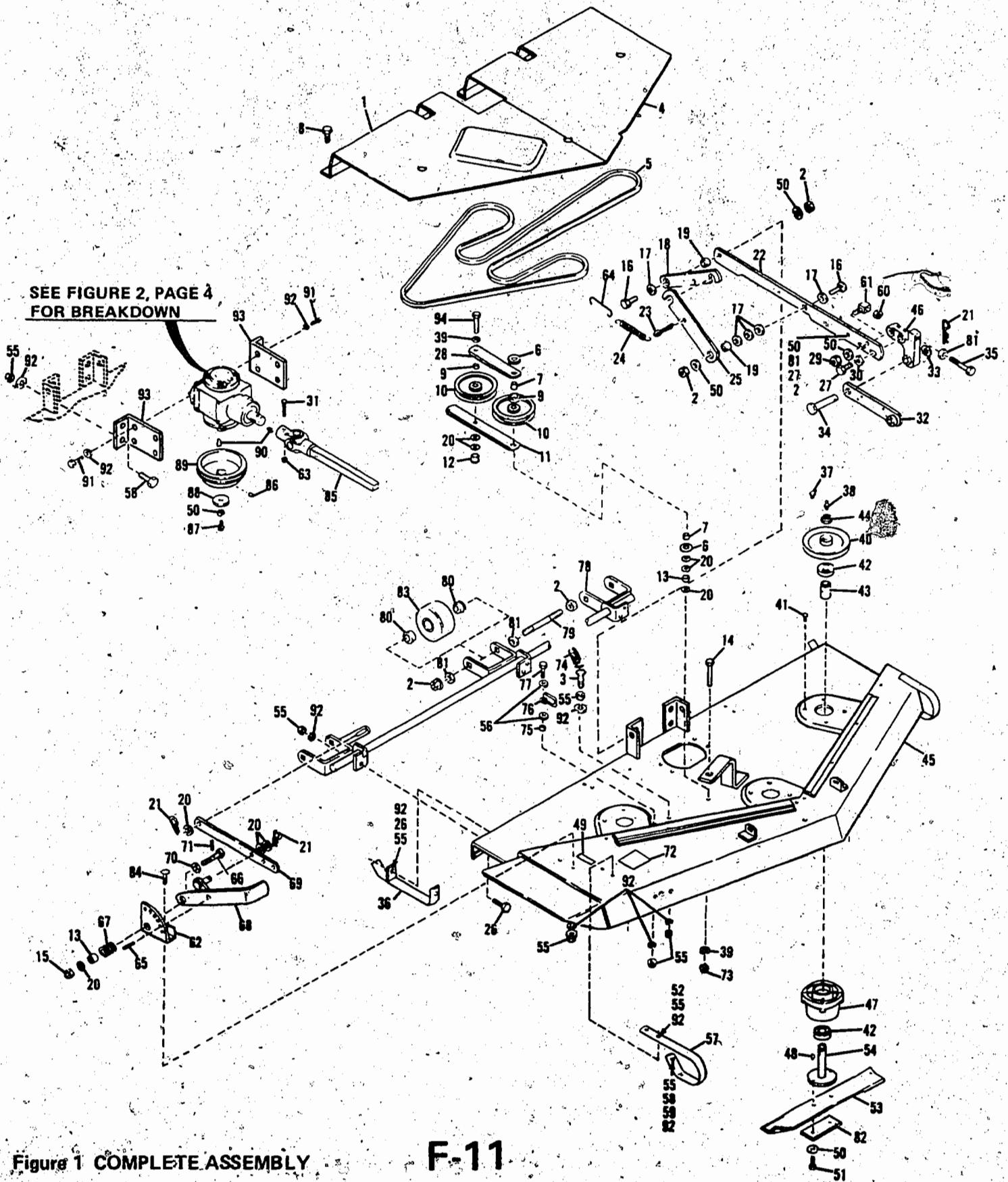


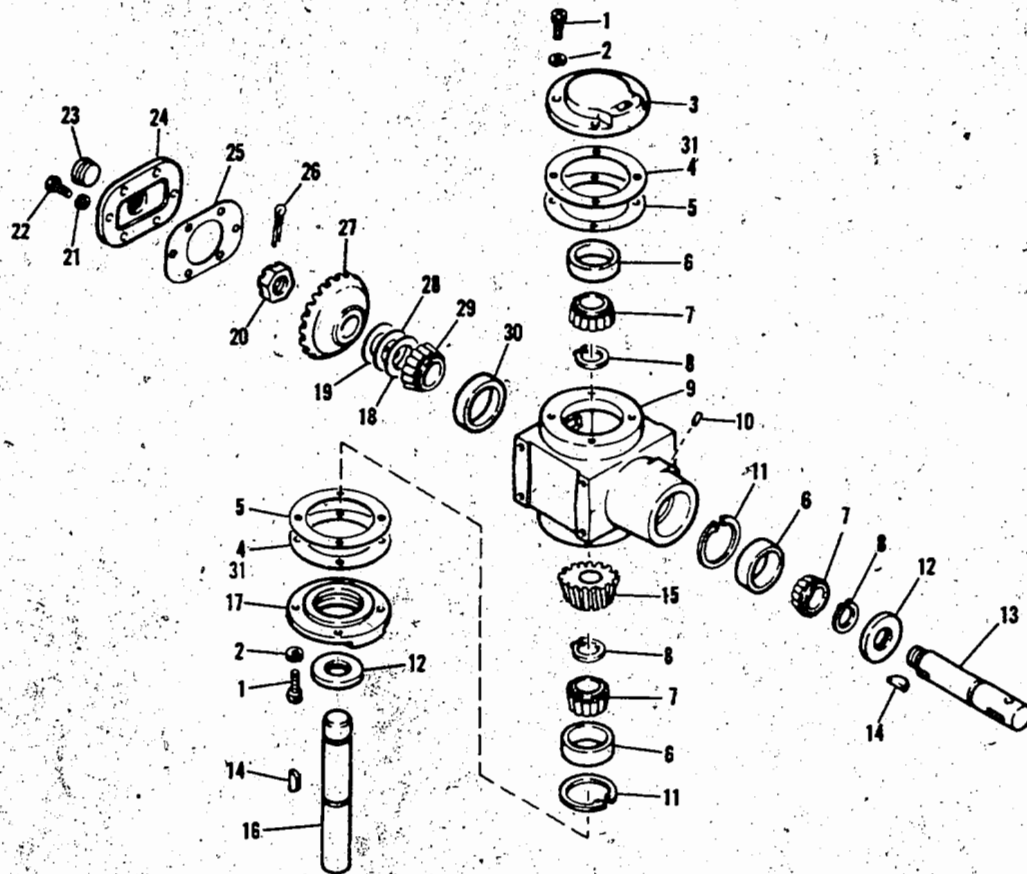
Figure 1 COMPLETE ASSEMBLY

F-11

REF. NO.	PART NO.	DESCRIPTION	NO. REQ'D.	REF. NO.	PART NO.	DESCRIPTION	NO. REQ'D.
1	1736911	Right Hand Belt Cover	1	48	1104436	Woodruff Key, 3/16 x 3/4	3
2	1733398	Nut, Top Lock, 3/8-16	4	49	1729037	Decal (Cut Line)	1
3	• 1100779	Hex Screw, 5/16-18 x 1-3/4	1	50	• 1100243	Lock Washer, 3/8	15
4	1736912	Left Hand Belt Cover	1	51	• 1100009	Capscrew, 3/8-24 x 1	6
5	1725502	V-Belt	1	52	• 1100078	Capscrew, 5/16-18 x 7/8	2
6	1724929	Thrust Washer	2	53	1725522	Cutter Blade	3
7	1724931	Bearing Sleeve	2	54	1724942	Shaft Assy.	3
8	1185750	Self Drilling Screw, No. 10-24 x 5/8	6	55	1732499	Nut, Top Lock, 5/16	20
9	1724927	Spacer	2	56	• 1107382	Flat Washer, 5/16	2
10	1724925	Idler Pulley	2	57	1722896	Right Hand Runner	1
11	1725456	Idler Arm	1	58	• 1100045	Capscrew, 5/16-18 x 1	5
12	1729585	Bearing Flange	1	59	1803327	Flat Washer, 5/16	1
13	1715387	Tubular Spacer	2	60	1186245	Nut, 3/8-24	2
14	• 1100066	Hex Head Capscrew, 1/2-13 x 3-1/2	1	61	1724933	Trunnion	2
15	1185496	Lock Nut, 1/2-13	1	62	1724843	Quadrant Assembly	1
16	• 1100047	Hex Screw, 3/8-16 x 1-1/2	4	63	• 1110106	Lock Nut, 1/4-20	1
17	• 1100256	Flat Washer, 3/8	10	64	1737203	Hook	2
18	1737202	Lift Link	2	65	1733103	Drive Pin, 5/16 x 3/4	1
19	1718651	Spacer	4	66	1731547	Special Screw	1
20	• 1107385	Flat Washer, 1/2	9	67	1716583	Spring	1
21	1723478	Spring Cotter	4	68	1731550	Handle Assy.	1
22	1737246	Mower Hanger	2	69	1722888	Lift Link	1
23	1185584	Cotter Pin	2	70	1890234	Special Washer	1
24	1724582	Extension Spring	1	71	1185256	Roll Pin, 3/16 x 7/8	1
25	1736870	Lift Link	2	72	1736773	Decal Mower	1
26	• 1100078	Capscrew, 5/16-18 x 7/8	8	73	1734514	Top Lock, 1/2-13	1
27	• 1100047	Hex Screw, 3/8-16 x 1-1/2	2	74	1725457	Extension Spring	1
28	• 1724926	Idler Arm	1	75	1714665	Spacer	1
29	1110150	Locknut, 3/8-16	2	76	1724828	Belt Guide	1
30	1185715	Washer, Shakeproof	2	77	• 1100808	Capscrew, 5/16-18 x 1-1/4	1
31	• 1111601	Capscrew, 1/4-20 x 1-3/4	1	78	1734572	Wheel Yoke Assembly	1
32	1737583	Drag Link Assy.	2	79	1731730	Axle	3
33	1107386	Flat Washer, 5/8	2	80	1731731	Ball Bearing	6
34	1719367	Clevis Pin	2	81	1107383	Washer	10
35	1724801	Hex Screw, 3/8-24 x 2-3/4	2	82	1724051	Plate	3
36	• 1726688	Right Hand Runner Assy.	1	83	1717649	Roller	3
37	1731503	Grease Fitting, 45°	1	84	1186098	Carriage Bolt, 5/16-18 x 3/4	2
38	1185976	Grease Fitting	2	85	1722632	Drive Assembly	1
39	• 1100245	Lockwasher, 1/2	2	86	1185919	Set Screw, 5/16-18 x 3/8	2
40	1727555	Sheave	3	87	• 1111708	Capscrew, 3/8-24 x 5/8	1
41	1724491	Screw, Flange Whiz Lock, 5/16-18 x 3/4	12	88	1703052	Flat Washer	1
42	1185828	Ball Bearing	6	89	1718659	Sheave	1
43	1724033	Spacer	3	90	1100276	Woodruff Key, 1/4 x 7/8	2
44	1185093	Self Locking Nut, 3/4-16	3	91	• 1103195	Capscrew, 5/16-18 x 5/8	8
45	1736901	Base Assy.	1	92	• 1100242	Lockwasher, 5/16	28
46	1724915	Adjusting Hitch	2	93	1733820	Support Bracket	2
47	1724029	Spindle Housing	3	94	• 1100034	Hex Head Capscrew, 1/2-10 x 2	1
				NI	1736796	Spray Paint, Dark Green	

• Common Hardware - Purchase Locally
(Grade 5 Where Applicable)

*1714208 Repair Kit for Joint Marked NEAPCO
*1714207 Repair Kit for Joint Marked 6N
*1723790 "U" Joint Assy. Packed W/Tractor



REF. NO.	PART NO.	DESCRIPTION	NO. REQ'D.	REF. NO.	PART NO.	DESCRIPTION	NO. REQ'D.
1	• 1110818	Capscrew, 5/16-18 x 3/4 . . .	8	17	1717454	Bearing, Retainer.	1
2	• 1100242	Lockwasher, 5/16	8	18	1800750	Shim, 1-1/2 x .003.	1
3	1718620	Bearing Retainer	1	19	1800338	Shim, .015	1
4	1719501	Gasket.	2	20	1185662	Slotted Nut, 7/8-14 UNF . .	1
5	1717456	Gasket.	10	21	• 1100241	Lockwasher, 1/4	6
6	1185660	Bearing Cup	3	22	• 1100805	Capscrew, 1/4-20 x UNC-3 .	6
7	1185661	Bearing Cone	3	23	1100937	Plug, 3/4-14 NPT.	1
8	1185689	Retaining Ring	3	24	1717448	Cover	1
9	1717446	Gear Case (Incl. Ref. Nos. 18, 19, 28, 29 & 30)	1	25	1717449	Gasket Cover	1
10	182682	Breather	1	26	• 1100352	Cotter Pin, 1/8 x 1-1/2	1
11	1118735	Retaining Ring	2	27	1717459	Gear, 29 T	1
12	1185687	Oil Seal	2	28	1800751	Shim, 1-1/2 x .005.	1
13	1718622	Input Shaft	1	29	1185688	Bearing Cone	1
14	1709611	Woodruff Key, 1/4 x 7/8 . . .	2	30	1185118	Bearing Cup	1
15	1717457	Bevel Pinion, 18T	1	31	1721346	Gasket, .030.	1
16	1730597	Shaft, Output.	1	NI	1723456	Gear Lube, EP90	

Figure 2 GEAR CASE ASSEMBLY

• Common Hardware - Purchase Locally
(Grade 5 Where Applicable)