

# **BOLENS**

---

**TILLER  
ATTACHMENT  
25 INCH  
MODELS 18618-01  
and 18618-02**

# **ILLUSTRATED PARTS CATALOG**

**BOLENS**  
PORT WASHINGTON, WISCONSIN, U.S.A.

PRINTED IN U.S.A.

FORM NO. P-552314  
3-71

# TILLER ATTACHMENT MODELS 18618-01 & 18618-02

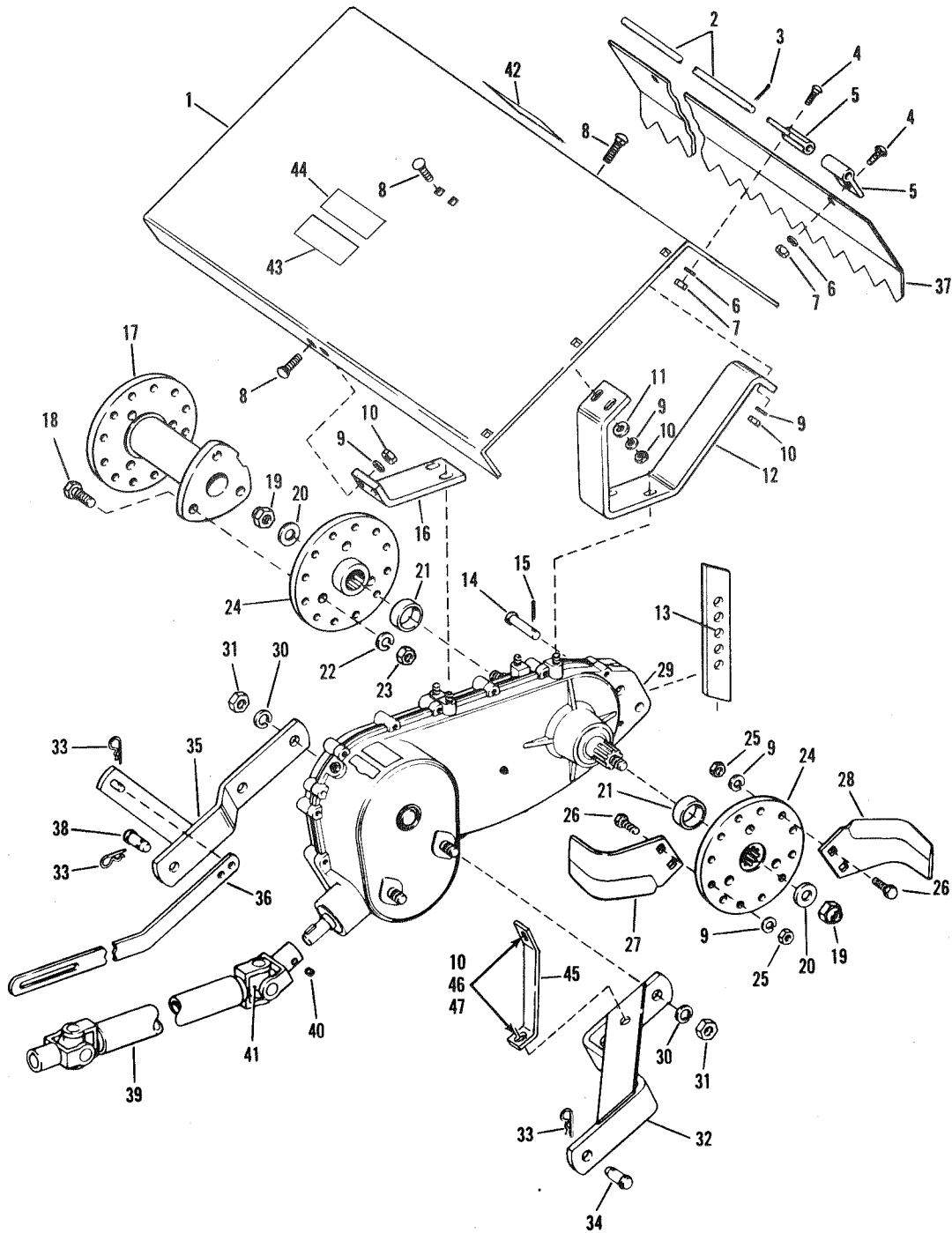


FIGURE 1

## TILLER ATTACHMENT MODELS 18618-01 & 18618-02

Ref. No.	Part No.	Description	No. Req'd.
1	1723 033	Hood	1
2	1723 031	Hinge Pin	1
3	1100 346	Cotter Pin, 3/32 x 3/4	2
4	1111 265	Carriage Bolt, 5/16-18 x 3/4	4
5	1718 196	Hinge	4
6	1100 242	Lockwasher, 5/16	4
7	1182 563	Hex Nut, 5/16-18	4
8	1111 285	Carriage Bolt, 3/8-16 x 1	6
9	1100 243	Lockwasher	54
10	1110 108	Lock Nut, 3/8-16	8
11	1107 383	Flat Washer, 3/8	2
12	1719 680	Rear Hood Bracket	1
13	1718 189	Center Shoe	1
14	1708 336	Clevis Pin	1
15	1100 350	Cotter Pin, 1/8 x 1	1
16	1718 205	Front Hood Bracket	1
17	1718 138	Spacer	2
18	1107 033	Hex Head Capscrew, 1/2-13 x 1-3/4	6
19	1185 229	Hex Lock Nut, 5/8-18	2
20	1800 041	Spacer Washer	2
21	1718 170	Sleeve	2
22	1100 245	Lockwasher, 1/2	6
23	1121 511	Hex Nut, 1/2-13	6
24	1718 140	Tiller Hub	2

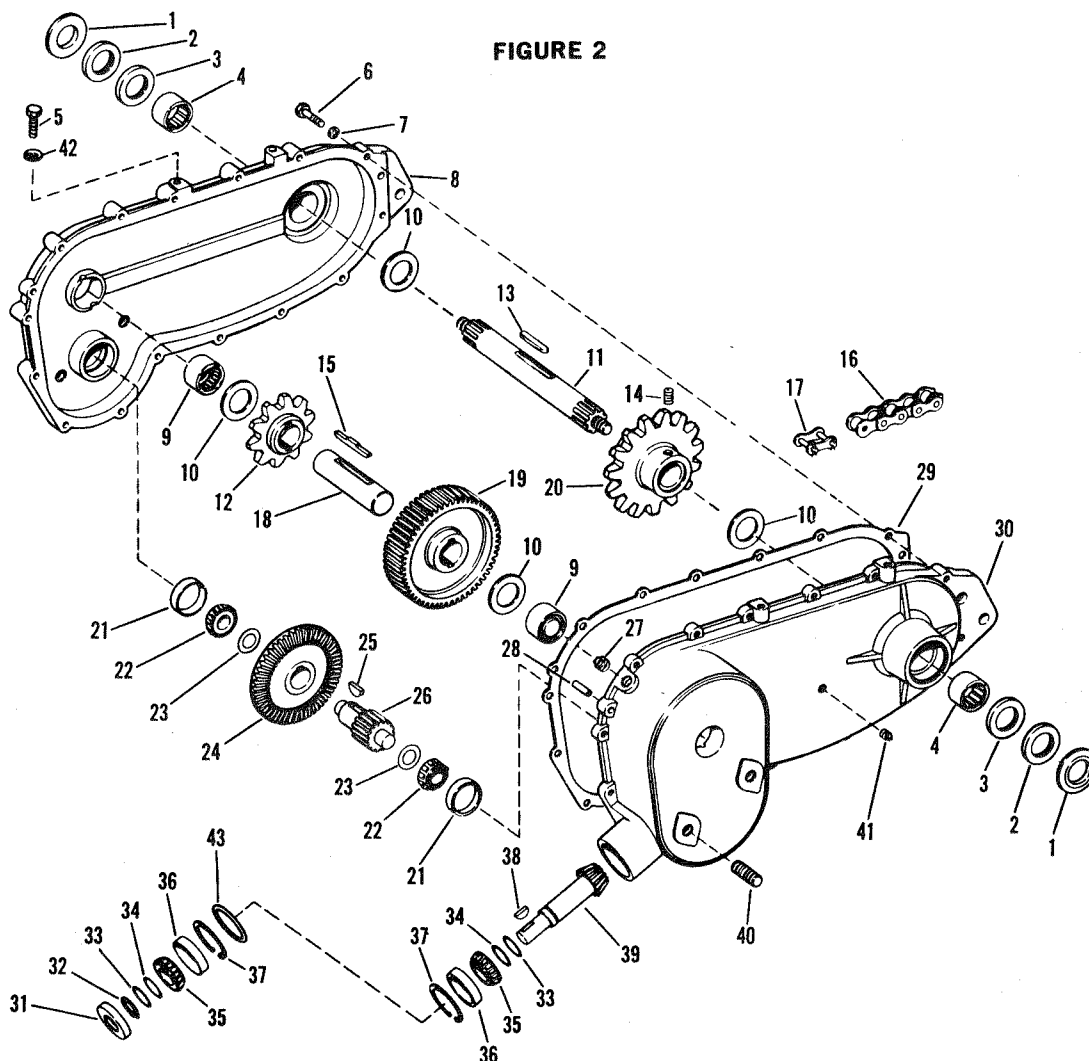
Ref. No.	Part No.	Description	No. Req'd.
25	1110 150	Hex Nut, 3/8-24	48
26	1100 010	Hex Head Capscrew, 3/8-24 x 1-1/4 H. T.	48
27	1709 387	Right Hand Bend Tine	12
28	1709 388	Left Hand Bend Tine	12
29	1721 594	Gear Case Assy. (See Fig. 2)	1
30	1100 247	Lockwasher, 5/8	4
31	1121 513	Hex Nut, 5/8-11	4
32	1718 165	Support Arm Assembly	1
33	1703 011	Spring Cotter	3
34	1713 553	Clevis Pin, 5/8 x 1-5/8	1
35	1718 169	Support Arm Assembly	1
36	1713 506	Lift Link	1
37	1723 032	Leveling Board	1
38	1713 501	Clevis Pin	1
*39	1713 550	Driveshaft	1
40	1103 494	Set Screw, 3/8-16 x 1/2	1
41	1100 762	Grease Fitting	1
42	1715 633	Decal, Bolens	1
43	1715 670	Decal, Caution	1
44	1719 335	Decal, Tiller Instruction	1
45	1723 172	Hood Brace	1
46	1106 918	Hex Head Capscrew, 3/8-16 x 1	2
47	1104 008	Star Washer, 3/8	2

\* 1714 207 Repair Kit for Joint Marked 6N

\* 1714 208 Repair Kit for Joint Marked NEAPCO

# TILLER ATTACHMENT MODELS 18618-01 & 18618-02

FIGURE 2



Ref. No.	Part No.	Description	No. Req'd.
1	1718 153	Seal Washer	2
2	1185 630	Oil Seal	2
3	1185 629	Oil Seal	2
4	1185 721	Needle Bearing	2
5	1719 673	Capscrew, 3/8-16x1-1/4	4
6	1100 779	Hex Head Capscrew, 5/16-18x1-3/4	15
7	1100 242	Lockwasher, 5/16	15
8	1720 395	Gearcase Cover	1
9	1185 720	Needle Bearing	2
10	1710 530	Thrust Washer	4
11	1721 592	Tine Shaft	1
12	1718 147	Sprocket, 10-Tooth 1 Inch Pitch	1
13	1718 149	Square Key, 5/16x2-1/4	1
14	1103 494	Set Screw, 3/8-16x1/2	1
15	1718 143	Special Key	2
16	1718 151	Roller Chain, 1 Inch Pitch	1
17	1718 152	Roller Chain Connector	1
18	1718 146	Shaft	1
19	1718 210	Gear, 56 Tooth	1
20	1721 591	Sprocket, 15-Tooth 1 Inch Pitch	1

Ref. No.	Part No.	Description	No. Req'd.
21	1185 276	Bearing Cup	2
22	1185 275	Bearing Cone	2
23	1701 446	Shim, 3/4 x .005	AR
24	1718 113	Bevel Gear, 51 Tooth	1
25	1708 382	Woodruff Key	1
26	1718 144	Pinion	1
27	1706 566	Plug Assembly	1
28	1185 206	Drive Pin	2
29	1718 142	Gasket	1
30	1720 394	Tiller Case	1
31	1185 687	Oil Seal	1
32	1185 689	Retaining Ring	1
33	1701 448	Shim, 1 x .005	AR
34	1718 193	Shim, 1 x .020	AR
35	1185 661	Bearing Cone	2
36	1185 660	Bearing Cup	2
37	1118 735	Retaining Ring	2
38	1104 436	Woodruff Key, 3/16x3/4	1
39	1718 112	Pinion, 13 Tooth	1
40	1113 754	Stud, 5/8-11 x 2	4
41	1185 741	Pipe Plug, 1/8	1
42	1100 243	Lockwasher	4
43	1719 442	Shim, 1.978 x .005	AR