

Owner Operation and Maintenance Manual

WITH
PARTS
LIST

BOLENS
TILLER ATTACHMENT
MODELS 18609-01,
18610-01 AND
18610-02

ASSEMBLY

The tiller is a rear mounted attachment and is powered by the drive shaft assembly connected to the tractor power take-off.

Select end of drive shaft with keyway in universal joint. Align keyway with Woodruff key in tiller drive shaft, slide joint on tiller shaft as far as possible and secure with set screw.

Slide drive shaft assembly under tractor from the rear and insert splined end of universal joint over rear splined end of tractor power take-off shaft.

Align hole in ends of tiller hitch with holes in mounting brackets of tractor rear axle housing, secure with clevis pins and spring cotters.

Position slotted hole in lift link over stud of tiller hitch lift arm. Secure with flat washer and spring cotter. Attach opposite end of lift link to stud on tractor lift lever using front or rear hole in link. The front hole will give greater tilling depth but less lift than the rear hole.

Attach leveling board to rear of tiller hood with hinge rod and secure with cotter pin.

CONTROLS

There are two controls for operating the tiller: (1) the tractor power take-off lever for engaging and disengaging the tiller rotor; (2) the tractor lift lever for raising and lowering the tiller.

OPERATION

The tiller shoe is primarily for cultivating and should then be in the low setting. For tilling, the shoe should be either in the high setting or removed so it will not resist tine penetration.

For tilling, the tractor should be operated in the low speed range and engine at full throttle to assure maximum power. Travel speed should be controlled with the tractor gear shift lever and not by changing the engine speed.

For maximum tilling depth move the tractor lift lever all the way forward. This will place the tiller in "float" position and give maximum tilling depth depending on soil conditions and travel speed. If desired depth is not obtained on a single pass, additional passes will be necessary.

Shallow penetration for cultivating can be controlled by adjusting the tiller height with the tractor lift lever.

For turning or transport, disengage tiller rotor and raise tiller to highest position.

LUBRICATION

The gear case is filled at the factory to filler hole level with #90 gear lubricant. Check oil level after every 8 hours of operation and add lubricant as necessary to maintain filler hole level. The drive shaft assembly has a grease fitting on each universal joint, lubricate fittings every 8 hours of operation with pressure gun grease.

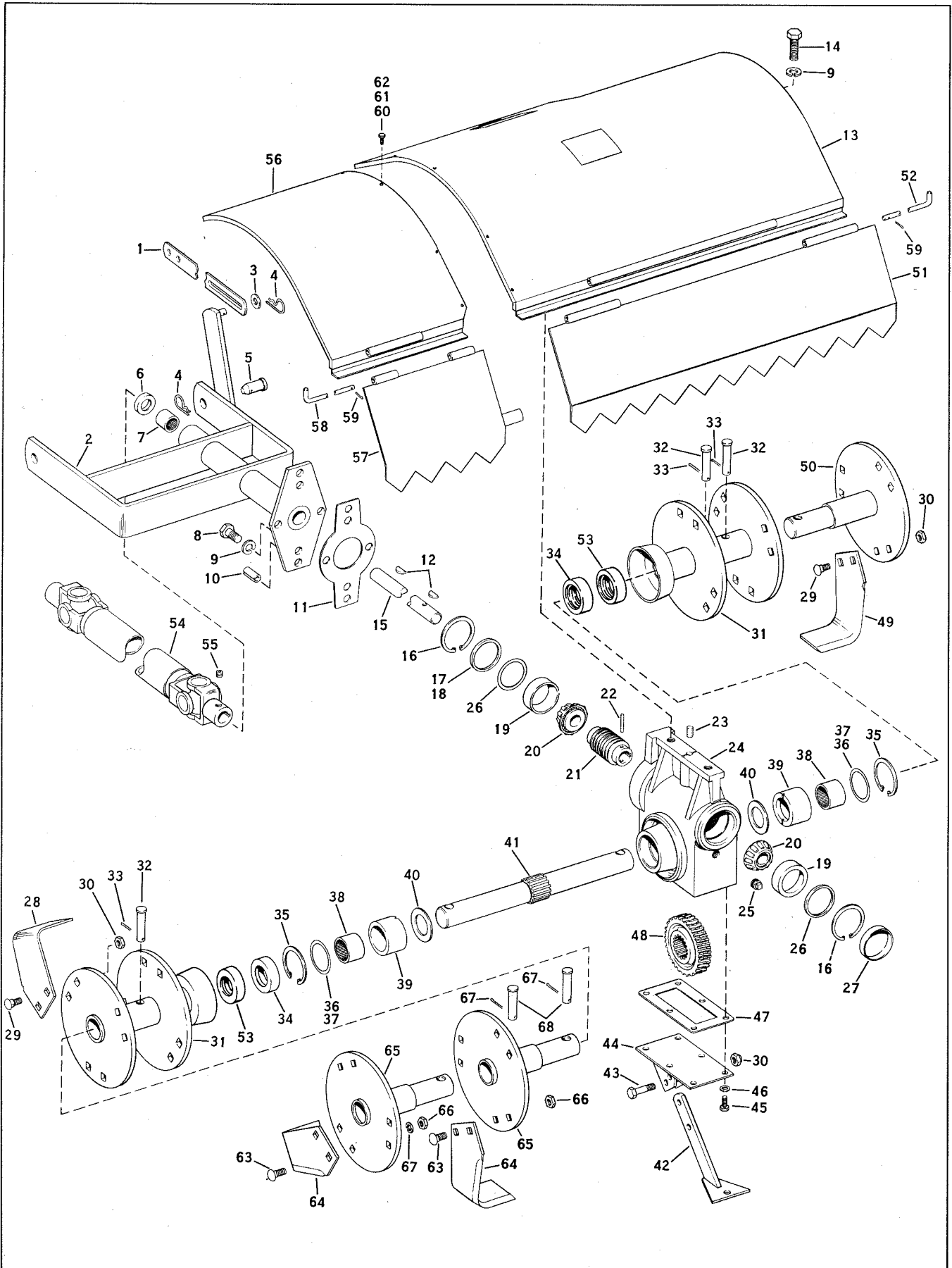
TINE EXTENSIONS

A Model 18837-01 tine extension is available to increase the cultivating width of the tiller. To install, mount hood extension and leveling board to the left side of tiller hood with capscrews, lockwashers, and nuts. Insert shaft of one extension into tiller hub, rotate extension so extension tines are positioned between tiller tines. Align hole in extension shaft with hole in tiller hub and secure with clevis pin and spring cotter. In like manner, install the second extension to hub of first extension.

BOLENS DIVISION
® PORT WASHINGTON, WISCONSIN
America's Finest Outdoor Power Equipment

PRINTED IN U.S.A.

TILLER ATTACHMENTS 18609-01, 18610-01 AND 18610-02



TILLER ATTACHMENTS 18609-01, 18610-01 AND 18610-02

Ref. No.	Part No.	Description	No. Req'd.
1	1713506	Lift Link	1
2	1713546	Hitch	1
3	1107383	Flat Washer 3/8	1
4	1703011	Spring Cotter	3
5	1713553	Clevis Pin	2
6	1185296	Oil Seal	1
7	1185010	Needle Bearing	1
8	1106985	Capscrew 1/2-13 x 1	4
9	1100245	Lockwasher 1/2	6
10	1185339	Drive Pin	2
11	1709815	Gasket	1
12	1104436	Woodruff Key 3/16 x 3/4	2
13	1713547	Hood	1
14	1106987	Capscrew 1/2-13 x 1-1/4	2
15	1713551	Shaft	1
16	1118736	Retaining Ring	2
17	1800753	Shim - .005"	As Req'd.
18	1800752	Shim - .003"	As Req'd.
19	1185202	Bearing Cup	2
20	1185201	Bearing Cone	2
21	1713543	Worm Gear	1
22	1120210	Roll Pin	1
23	1800339	Breather	1
24	1709820	Rotor Housing	1
25	1105678	Plug	1
26	1800007	Spacer Washer	2
27	1800146	Cupped Plug	1
28	1709387	Tine - Right Bend	6
29	1711361	Carriage Bolt (Special)	30
30	1110108	Lock Nut 3/8-16	32
31	1709795	Tine Hub	2
32	1706419	Clevis Pin	3
33	1100350	Cotter Pin 1/8 x 1	3
**34	1185629	Oil Seal	2
35	1118735	Retaining Ring	2
36	1800333	Shim - .005"	As Req'd.
37	1800334	Shim - .001"	As Req'd.
38	1187206	Needle Bearing	2
39	1800059	Bearing Retainer	2
40	1800060	Thrust Washer	2
41	1709818	Shaft	1
42	1709976	Shoe	1
43	1106923	Capscrew 3/8-16 x 1-1/4	2

Ref. No.	Part No.	Description	No. Req'd.
44	1709797	Cover	1
45	1106872	Capscrew 5/16-18 x 5/8	6
46	1110645	Lockwasher 5/16	6
47	1800003	Gasket	1
48	1714064	Gear - 32T	1
49	1709388	Tine - Left Bend	9
50	1709796	Tine Extension Hub	1
51	1709799	Leveling Board	1
52	1709816	Hinge Rod	1
**53	1185630	Oil Seal	2
DRIVE SHAFT ASSEMBLIES			
MODEL 18611 (HUSKY 600)			
*54	1713549	Drive Shaft	1
55	1103494	Set Screw 3/8-16 x 1/2	1
MODEL 18612 (HUSKY 800)			
*54	1713550	Drive Shaft	1
55	1103494	Set Screw 3/8-16 x 1/2	1
TINE EXTENSION			
56	1713739	Hood Extension	1
57	1713737	Leveling Board Extension	1
58	1709983	Hinge Rod	1
59	1100362	Cotter Pin 3/32 x 1/2	1
60	1106830	Capscrew 1/4-20 x 1/2	4
61	1100241	Lockwasher 1/4	4
62	1103838	Hex Nut 1/4-20	4
63	1711361	Carriage Bolt (Special)	12
64	1709387	Tine - Right Bend	6
65	1709796	Extension Hub	2
66	1110108	Lock Nut 3/8-16	12
67	1100350	Cotter Pin 1/8 x 1	2
68	1706419	Clevis Pin	2
* 1714207 Repair Kit for Joint Marked 6N			
* 1714208 Repair Kit for Joint Marked NEAPCO			

**1716378 Oil Seal Set (Includes One Seal Ref. 34 and One Seal Ref. 53)