

## SECTION

# B

## SERVICING THE HYDRAULIC PUMP

Rac. Form 9-77621

PRINTED  
IN  
U.S.A.

## HYDRAULIC PUMP (Refer to Figure B-1)

### Disassembly

**NOTE** Refer to Page B-4 for removal of the pump.

#### IMPORTANT

Before disassembly, scribe a line across the pump covers and body so alignment can be made upon assembly.

1. Remove 90° fitting (8) with "O" ring (9) and straight fitting (21) with "O" ring (22) from the pump body (10).
2. Remove capscrews (13), lockwashers (14) and pump support (19).

3. Loosen set screw (17) and remove spider hub (18) and key (20).

4. Remove bolts (1), washers (2) and cover (3) from the body (10). Remove seal (4) from cover (3).

5. Remove adapter cover (15) and remove seal (4), brass seal (11), rubber spacer (12) and seal (16).

6. From body (10), remove drive and driven gears (6 and 7) and bearings (5).

### Inspection

Clean all parts thoroughly before inspection. Replace all worn or damaged parts.

Inspect all metal parts for score marks, burrs, or other damage. Slight nicks and burrs can be removed with a hone or crocus cloth.

Inspect gears for chipped or damaged teeth.

Replace spacer and all seals and gaskets each time the hydraulic pump is disassembled.

### Assembly

1. Lubricate each part-except seal with clean, fresh, SAE No. 10 oil at assembly.

2. Apply a light coat of permatex No. 3, or equivalent, to the bore of cover (15), then press a new oil seal (16) in the cover until it bottoms with the oil seal lip to the inside of the pump. Refer to Inset A.

3. Place bearings (5) on gears (6 and 7) and with chamfered edge next to the gear. Then place gears in body (10).

4. Place rubber spacer (12) in cover (15), then install brass seal (11) and seal (4).

5. Place seal (4) in cover (3).

6. Install both covers on body, aligning the scribe marks made during disassembly.

#### CAUTION

Exercise care when installing cover on gear shaft so as not to damage oil seal.

7. Install bolts (1) and washers (2). Torque bolts 28-32 foot-pounds.

8. Install key (20) and spider hub (18). Tighten set screw (17) in hub securely.

9. Install pump support (19) using lockwashers (14) and capscrews (13).

10. Install 90° fitting (8) with "O" ring (9) and straight fitting (21) with "O" ring (22).

11. Refer to Page B-4 for installation of the pump.

**REFER TO SECTION A FOR CHECKING THE PUMP FLOW**

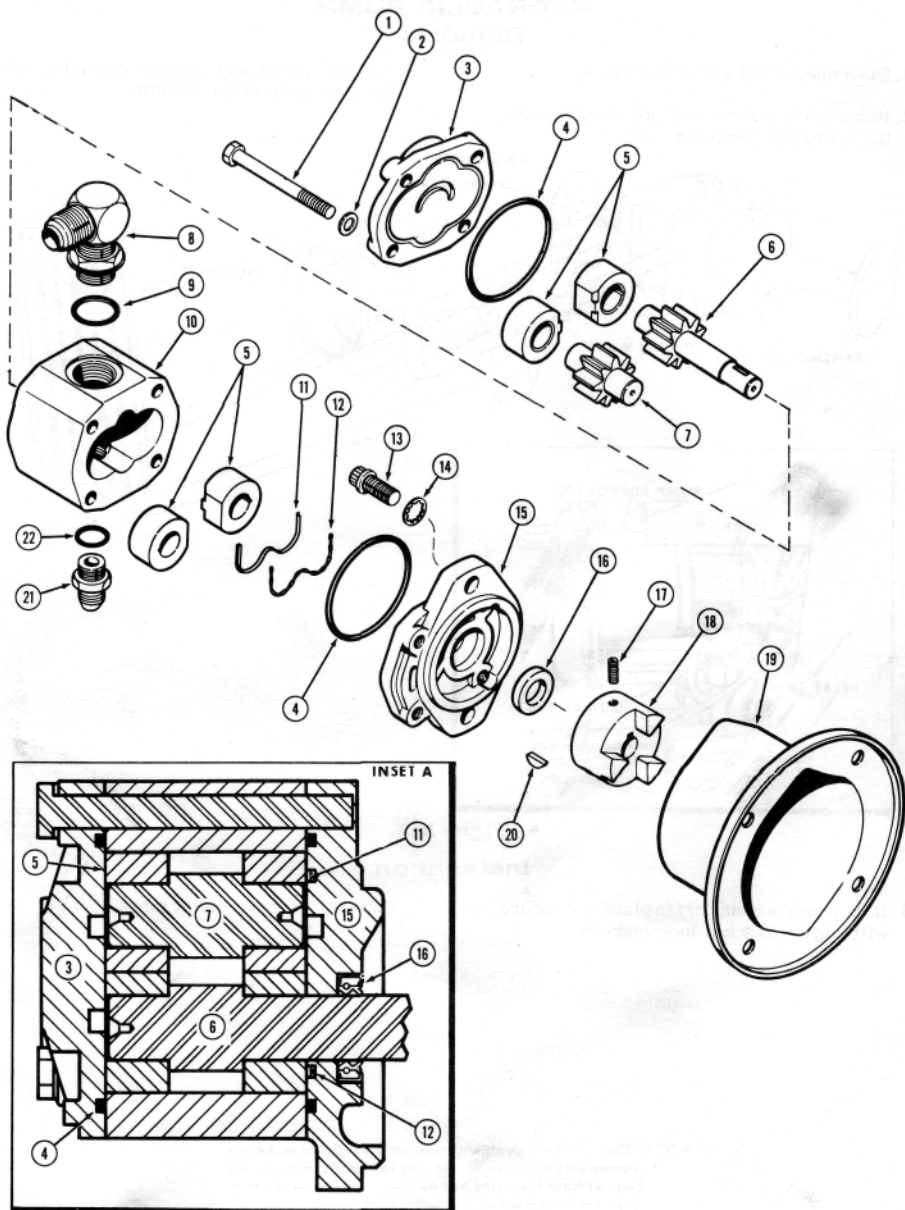


Figure B-1

## HYDRAULIC PUMP Removal

1. Disconnect inlet and outlet tubes.
2. Remove capscrews and lockwashers from the hydraulic pump support.
3. Remove pump and support assembly out the right side of the tractor.

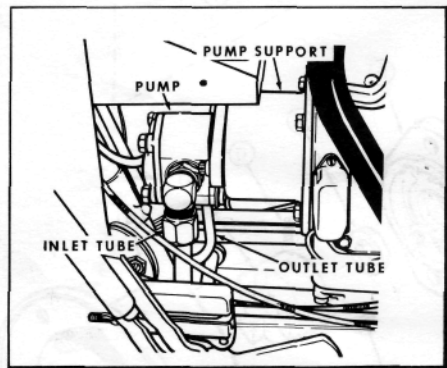
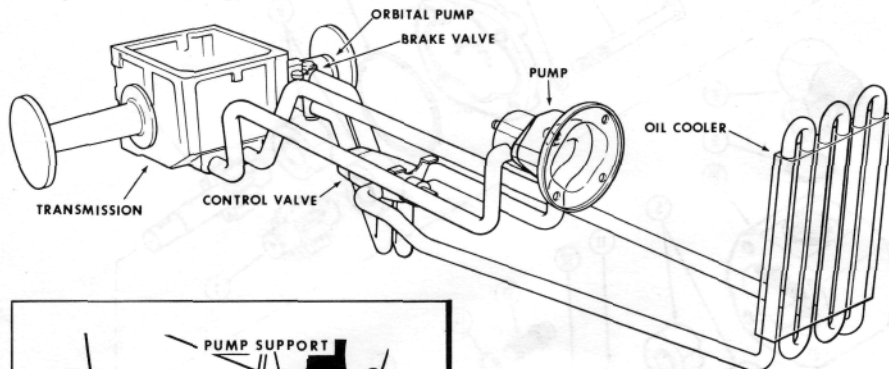


Figure B-2

## Installation

1. Hold pump and support in place and secure with capscrews and lockwashers.
2. Connect inlet and outlet tubes.

**NOTE:** The J I Case Company reserves the right to make improvements in design or changes in specifications at any time without incurring any obligation to install them on units previously sold.