



Dump Cart

E60

Operator's Manual 9-99553

casecoltingersoll.com

JI Case
A Tenneco Company



INTRODUCTION

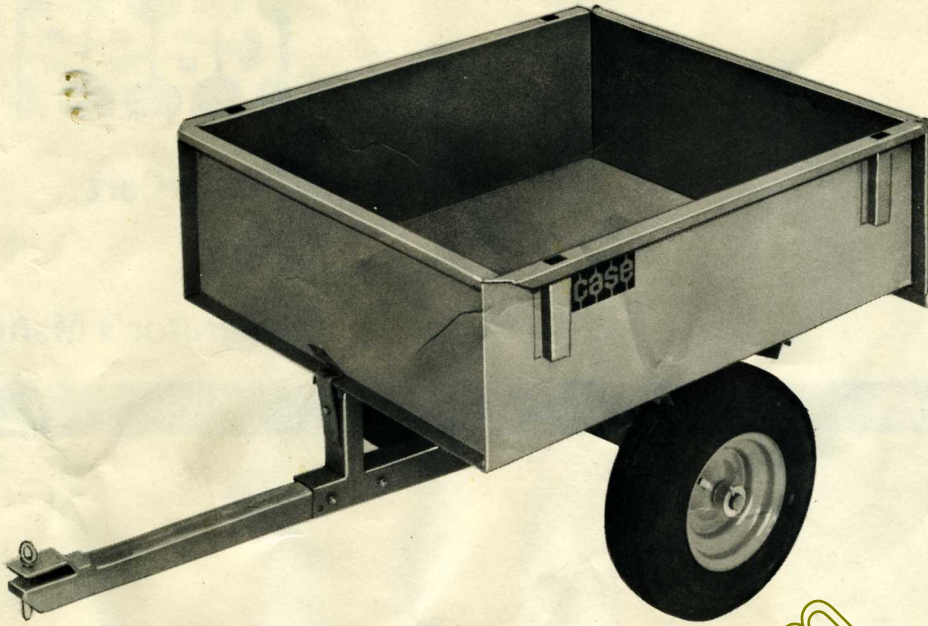


Figure 1
E-60 Dump Cart — Assembled

The Case Model E60 Dump Cart offers several distinctive design features which include:

1. Eight cubic foot box capacity.
2. Axle support extends across full width of the box providing full 1000 pound test load rating.
3. The inside surfaces of the box are completely free of bolt heads or other protrusions which permits unobstructed use of shovels and scrapers for easy cleanout.
4. The box dumps at a 40° angle assuring fast, clean and positive unloading.
5. Side stake pockets are provided to permit the installation of locally fabricated side racks for hauling bulky materials.
6. Angled channel tail gate slide for easy removal and snug closure.
7. A tail gate designed so that the smooth side is always toward the inside of the box assuring easy removal when loaded.
8. A spring loaded latch for positive locking action after completion of dump.
9. Folded top edges that form a rub rail and reinforce the box sides.
10. An adjustable tongue that allows for proper alignment of tractor and dump cart.

ASSEMBLY

1. With the cart box positioned upside down, locate the axle tongue in the slot on the axle support.
2. Slide the axle shaft through the axle support and the axle tongue.
3. Install a plain washer over each end of the axle shaft.
4. Place the wheels on the shaft with the valve stems to the outside and secure with the plain washers and cotter pins provided.
5. Assemble the hitch tongue to the axle tongue with the four 3/8" x 3/4" bolts and locknuts provided. If the cart is to be used with a low clearance tractor such as the Model 210, 220, 222, or 224, connect the two front bolts to holes "A" in the axle and hitch tongues. If using the cart with a high clearance tractor, such as the Model 444 or 446, install the two forward bolts at holes "B". Installing the tongues in this manner will properly level the cart when it is connected to the tractor draw bar.
6. Turn the cart over on its wheels and slide the tail gate into position.

NOTE A light coating of grease or oil on the shaft will facilitate assembly. If necessary, use a hammer but first place a wood block against the shaft to prevent damage.

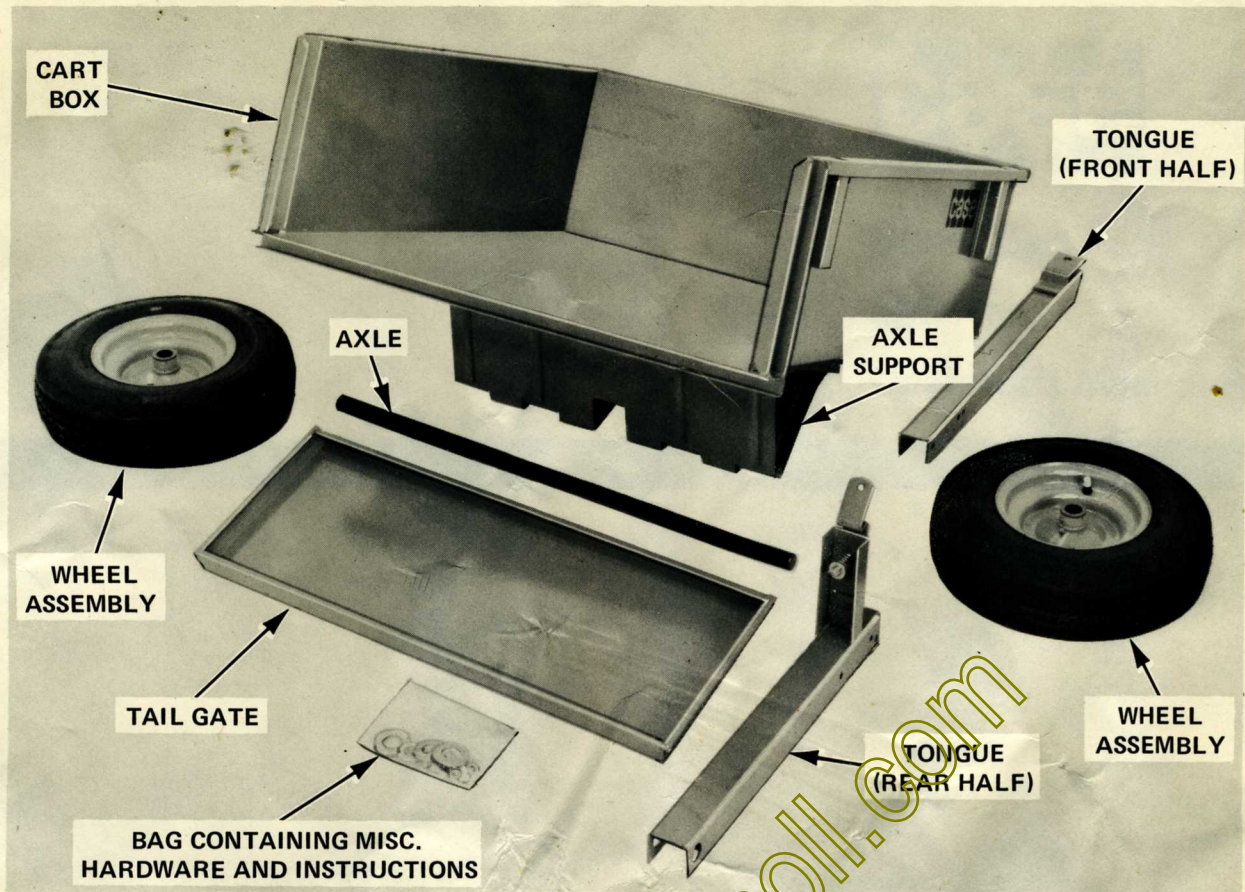
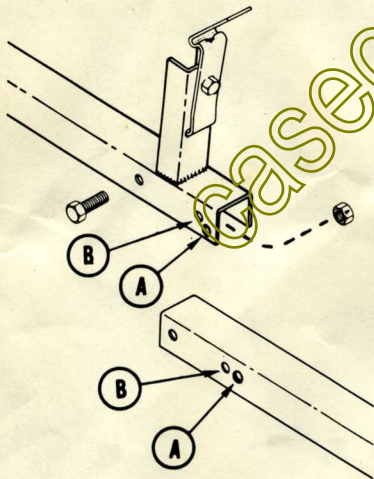


Figure 2
E-60 Dump Cart - Disassembled

OPERATION AND ADJUSTMENT

1. Maintain tire pressure at between 16 and 22 p.s.i.
2. Keep the wheel hubs well packed with automotive type chassis grease.
3. After using the cart for the first few hours, check and retighten the four tongue mounting bolts.
4. A hole is provided in the trip latch for attaching a rope if desired. This will facilitate dumping from the tractor seat.
5. Before storing the cart, clean off dirt and touch up any scratched or bare metal surfaces to prevent rusting. Touch up paint is available through your Case dealer. Also be sure the wheel hubs are filled with grease to prevent moisture from entering.



NOTE The J I Case Company reserves the right to make improvements in design or changes in specifications at any time without incurring any obligation to install them on units previously sold.

casecoltingersoll.com

Printed In U.S.A.