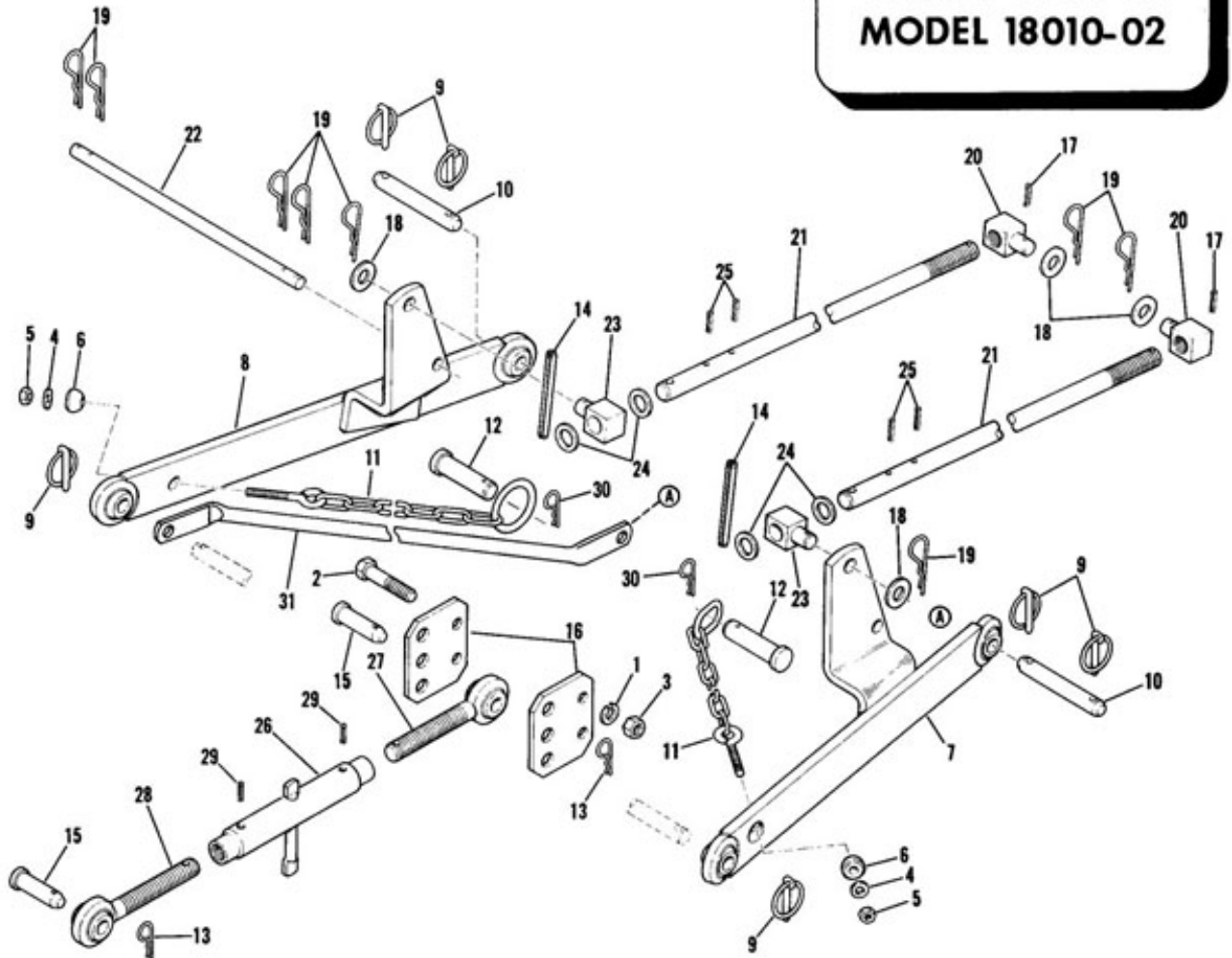


# ILLUSTRATED PARTS LIST

**THREE POINT HITCH  
MODEL 18010-01  
MODEL 18010-02**



Ref. No.	Part No.	Description	No. Req'd
1	1100 245	Lockwasher 1/2	2
2	1107 038	Capscrew 1/2 - 13 x 2-1/2	2
3	1121 511	Hex Nut 1/2-13	2
4	1107 382	Flat Washer 5/16	2
5	1110 107	Locknut 5/16 x 18	2
6	1715 525	Pivot	2
7	1719 385	Lift Assembly - L.H.	1
8	1719 386	Lift Assembly - R.H.	1
9	1719 349	Retaining Pin	6
10	1719 387	Link Pin	2
11	1719 582	Chain Assembly	2
12	1718 773	Clevis Pin 3/4 x 2-3/4	2
13	1703 011	Spring Cotter	2
14	1185 743	Drive Pin 5/16 x 4	2
15	1719 367	Clevis Pin	2
16	1719 388	Adjusting Plate	2

Ref. No.	Part No.	Description	No. Req'd
17	1704 692	Drive Pin 1/8 x 1	2
18	1107 386	Flat Washer 5/8	4
19	1185 590	Hitch Pin	8
20	1719 372	Adjusting Nut	2
21	1719 391	Adjusting Shaft	2
22	1719 389	Cross Bar	1
23	1719 373	Shaft Pivot	2
24	1700 821	Thrust Washer	4
25	1120 210	Drive Pin 3/16 x 1	4
26	1719 580	Adj. Handle - Link Assy	1
27	1719 578	Stud - R.H.	1
28	1719 579	Stud - L.H.	1
29	1185 277	Drive Pin 1/4 x 3/4	2
30	135 035	Cotter Pin (10 GA)	2
31	1721 204	Sway Bar (Mod. 18010-02)	1



# BOLENS

PORT WASHINGTON, WISCONSIN, U.S.A.

PRINTED IN U.S.A.

FORM NO. P-551958  
REISSUED 3/68

**MyTractorForum.com**

# Assembly Instructions

## THREE POINT HITCH MODEL 18010-02

### Forward

This three point hitch is shipped complete with all parts required to mount it to your tractor.

1) Attach left and right hand lift assemblies to the inside of the rear axle hitch points through top holes with special 5/8" link pins and secure with retaining pins.

2) Insert cross-bar through lower holes in lift assembly up-rights and secure with heavy hitch pins on both sides of each up-right as shown in Fig. 1 & 2.

3) With adjusting nuts and shaft pivots installed on the adjusting shafts Fig. 1 & 2, attach adjusting shafts to the upper hole in the lift assembly up-rights using flat washers and heavy hitch pins being sure the heavy spring pin and thrust washers have been properly installed to the back side of the pivots on the adjusting shafts.

4) Attach opposite threaded ends with adjusting nuts to the rear arm of the tractor hydraulic lift link using flat washers and heavy hitch pins.

5) Secure the two center link adjusting plates to the rear hitch with 1/2" hex head capscrews, hex nuts and lock washers.

6) Locate center adjusting link between adjusting plates and secure with clevis pin and small spring cotter.

It is recommended that the center adjusting link be installed in the center hole of the hitch adjusting plate. If more level ride of the attachment is required the link may be installed in the upper hole.

After attachment is installed attach chains as follows:

1) Secure one chain assembly (end without eye bolt) to each side of the rear axle at hitch points through lower hole with 3/4" clevis pins and small spring cotters.

2) Secure loose ends of chains (end with eye bolt attached) to rear end lift assemblies in holes provided with spherical washer, flat washer and lock nut, crossing chains so that left hand chain is connected to right hand lift assembly and right hand

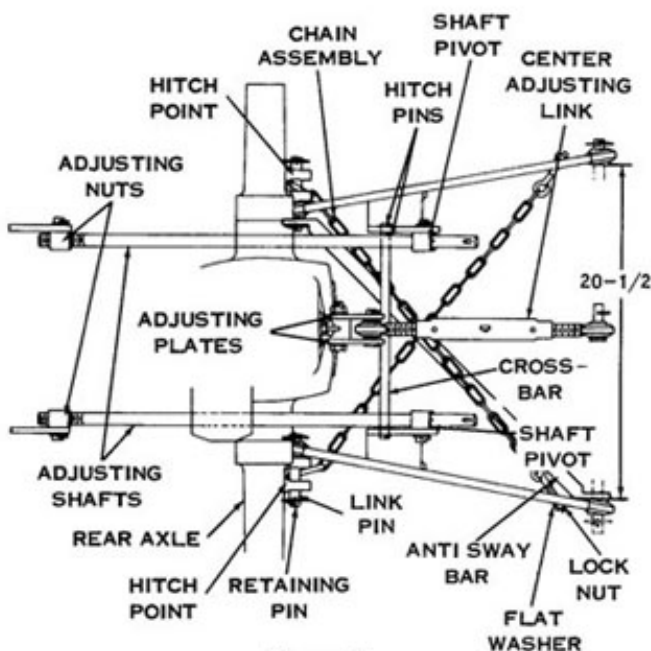


Figure 1

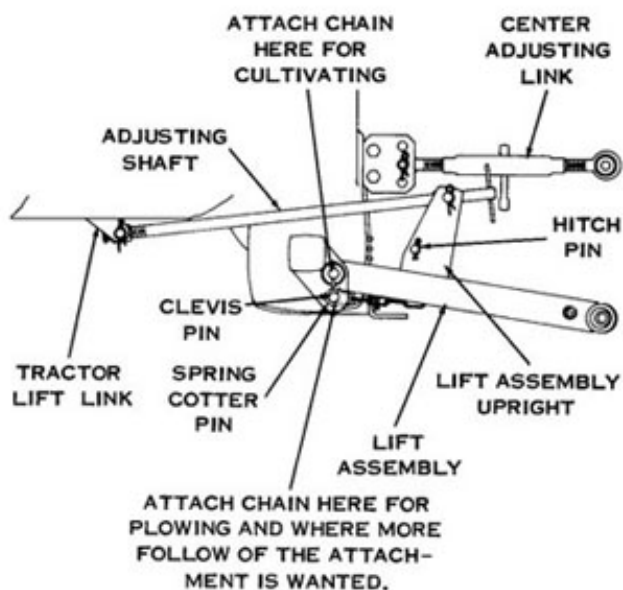


Figure 2



# BOLENS

PORT WASHINGTON, WISCONSIN, U.S.A.

chain is connected to left hand lift assembly. Raise hitch to fully raised position and take out play in chains by adjusting lock nuts on eye bolts. Adjust chains so that there is approximately 20-1/2" inside between lift assemblies.

If chain is attached to the upper pin of the rear axle hitch points, the chains may be adjusted with hitch in either raised or lowered position.

**IMPORTANT: DO NOT ADJUST CHAINS TOO TIGHT, BUT RATHER WITH A VERY SLIGHT AMOUNT OF SLACK TO PREVENT THEM FROM SNAPPING OR FROM DAMAGING THE HITCH.**

**CAUTION:** Improper adjustment may damage the tractor and/or attachments, therefore, after mounting or changing an attachment always move attachment slowly through its complete range to make sure there is no binding and/or interference.

SEE FIGURE 3 AND CHART FOR ADJUSTMENTS.

**NOTE:** An anti sway bar is furnished with this hitch. An anti sway bar is generally used when the attachment normally produces a side load. The anti sway bar may be used when doing side hill plowing, but not contour plowing.

The use of an anti sway bar in plowing creates some draw bar steering problems if plow is not set properly, and plow beam can become bent. Whenever using a grader or rake attachment or any rear mounted attachment which would have a large amount of side thrust the anti sway bar should be used, if the attachment is not already equipped with an anti sway bar.

**TO ATTACH ANTI SWAY BAR:**

A) Remove spring pin from special link pin in right hand rear axle hitch point. Attach one end of the anti sway bar and replace spring pin.

B) Attach other end to rear of the left hand lift assembly with the attachment draw bar shaft. Secure with spring pin.

**IMPORTANT:** When using some attachments it may be necessary to attach sway bar opposite to the above, to the Left Hand rear axle hitch point and to the rear of the Right Hand lift assembly. When using the anti sway bar the stabilizer chains can be removed. Store the chains in a safe place so they would be handy when you would want to reinstall them again.

**NOTE:** Final adjustments that will be required are outlined in the attachment owner manual for that specific attachment being used.

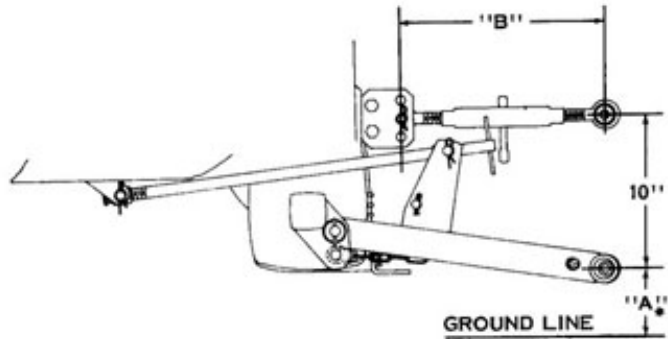


Figure 3

APPROXIMATE SETTINGS FOR 3 POINT HITCH			
DESCRIPTION	Height Lower Hitch Point "A"		Upper Link "B"
	Left	Right	
12" Plow	9-3/8	10-5/8	14-3/8
Disc Harrow	10	10	14
Cultivator	8	8	13-1/2

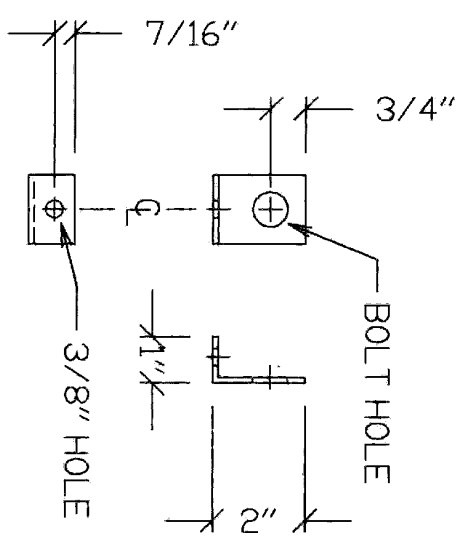
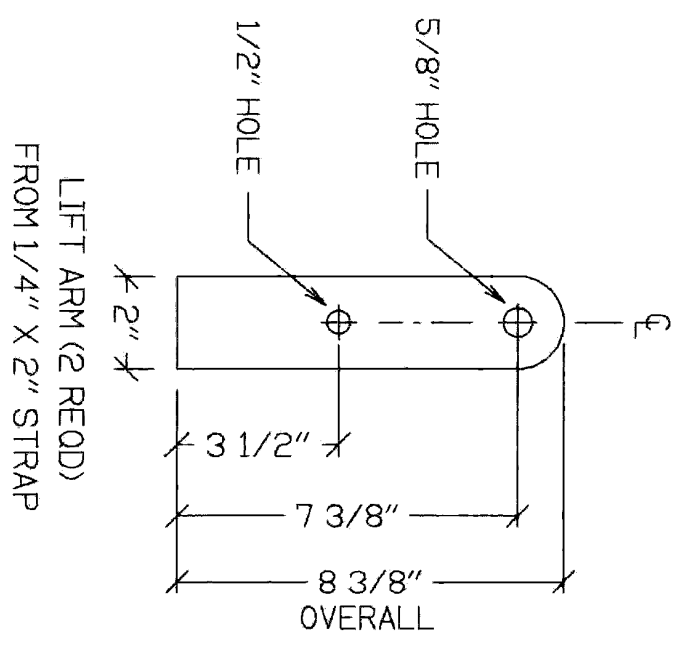
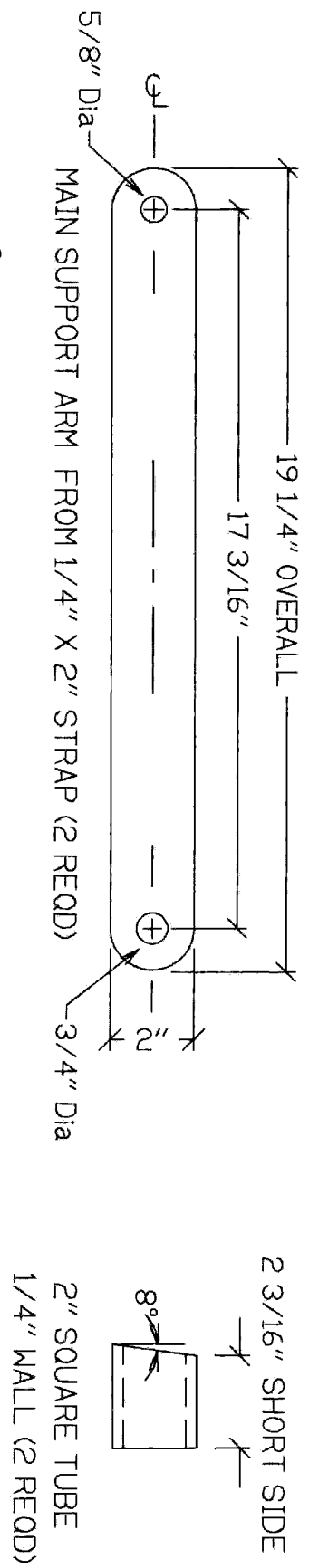
\*LOWEST POSITION FOR POWER TRAVEL

**NOTE:** Always raise a ground penetrating attachment before turning the tractor.

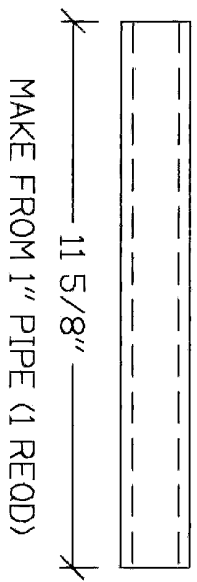
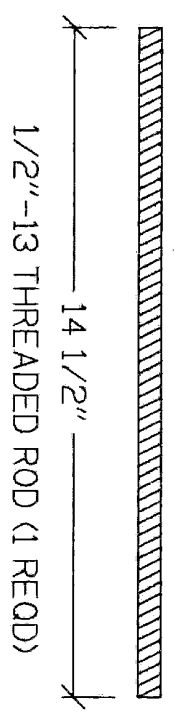






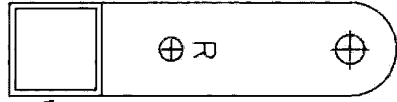


CHAIN BRACKET MAKE FROM 2" X 1/8" ANGLE IRON  
 MAKE 2 PCS WITH 3/4" Dia BOLT HOLE  
 MAKE 2 PCS WITH 5/8" Dia BOLT HOLE



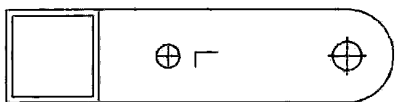
PLACE THE 90 Deg CUT END OF THE 2" TUBE AGAINST THE LIFT ARM  
 ALIGN THE SIDES AND BOTTOM OF THE TUBE FLUSH WITH THE SIDES AND  
 BOTTOM EDGES OF THE LIFT ARM. POSITION THE SHORT SIDE (2-3/16") OF  
 THE TUBE WITH THE RIGHT SIDE OF ONE OF A LIFT ARM TO MAKE THE "RIGHT"  
 ASSEMBLY. POSITION THE SHORT SIDE (2-3/16") OF THE TUBE WITH THE "LEFT"  
 OF THE OTHER LIFT ARM TO MAKE THE "LEFT" ASSEMBLY. WELD ALL 4 SIDES  
 OF WHERE THE TUBE MEETS THE LIFT ARM.

SIDE VIEW



THE SHORT SIDE OF  
 THE TUBE IS ON  
 THE RIGHT SIDE  
 OF THE ARM  
 WHEN WELDING THE  
 "RIGHT" ASSEMBLY

SIDE VIEW



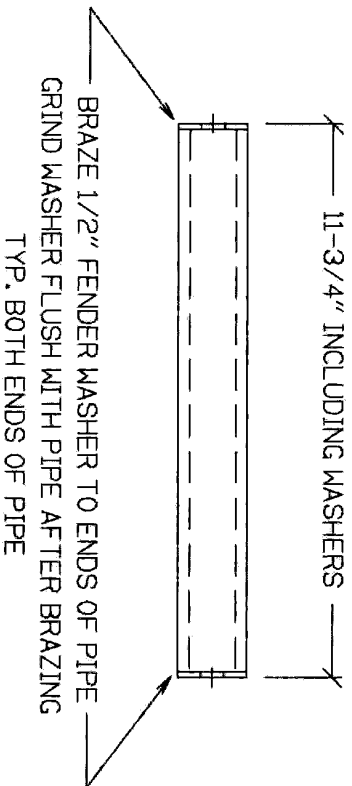
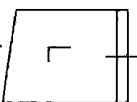
THE SHORT SIDE OF  
 THE TUBE IS ON  
 THE LEFT SIDE  
 OF THE ARM  
 WHEN WELDING THE  
 "LEFT" ASSEMBLY

8 Deg ANGLE CUT  
 END OF TUBE



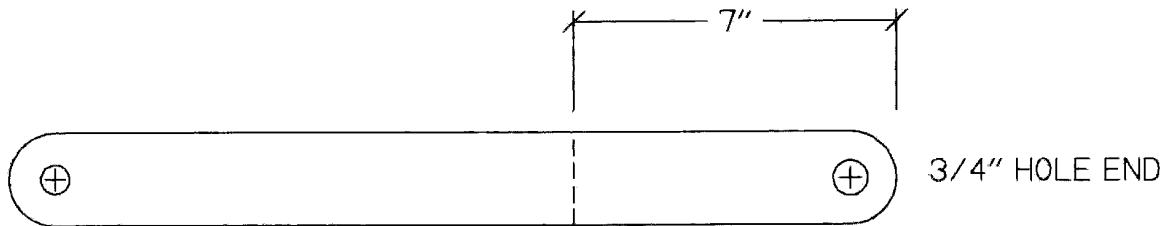
MARK THE ASSEMBLIES "LEFT" AND "RIGHT" AFTER WELDING

8 Deg ANGLE CUT  
 END OF TUBE

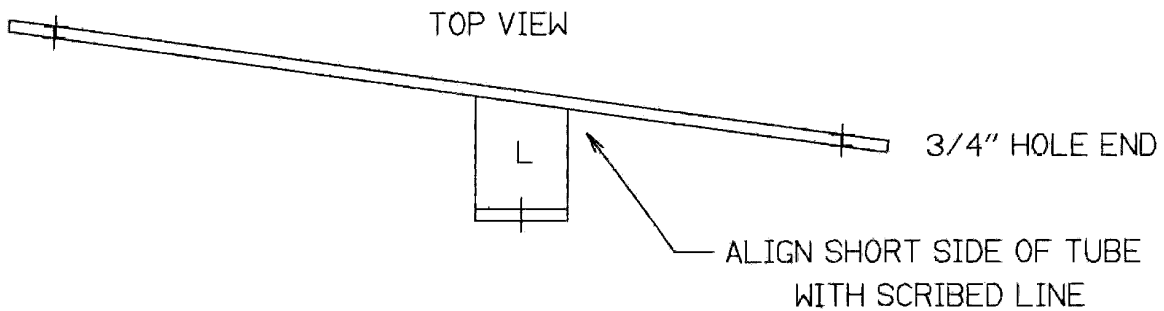




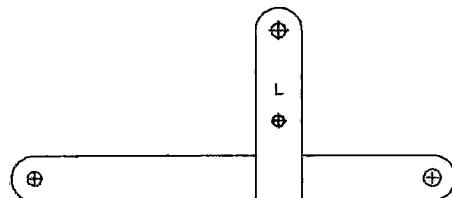
# FINAL ASSEMBLY "LEFT" SUPPORT ARM ASSEMBLY



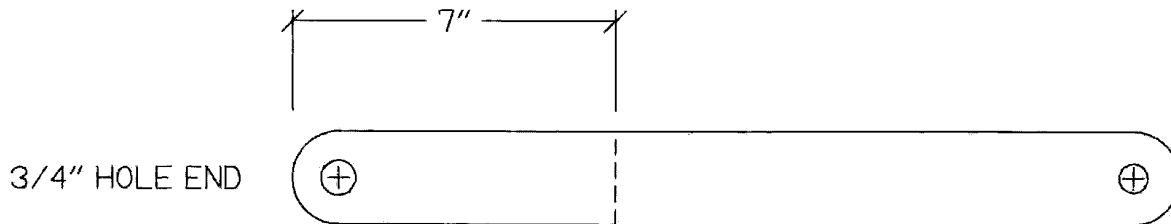
SCRIBE A LINE 7in FROM THE END OF THE SUPPORT ARM, WORKING FROM THE END WITH THE 3/4in HOLE IN IT.



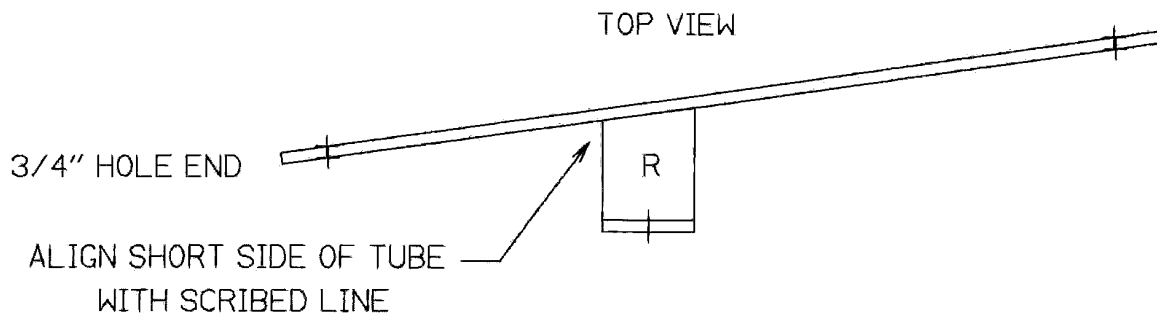
ALIGN THE SHORT SIDE OF THE "LEFT" LIFT ARM ASSEMBLY WITH THE SCRIBED LINE. THE TOP AND BOTTOM OF THE 2" TUBE SHOULD BE FLUSH WITH THE TOP AND BOTTOM OF THE SUPPORT ARM. WELD ALL 4 EDGES OF THE TUBE TO THE SUPPORT ARM.



# FINAL ASSEMBLY "RIGHT" SUPPORT ARM ASSEMBLY



SCRIBE A LINE 7in FROM THE END OF THE SUPPORT ARM, WORKING FROM THE END WITH THE 3/4in HOLE IN IT.



ALIGN THE SHORT SIDE OF THE "RIGHT" LIFT ARM ASSEMBLY WITH THE SCRIBED LINE. THE TOP AND BOTTOM OF THE 2" TUBE SHOULD BE FLUSH WITH THE TOP AND BOTTOM OF THE SUPPORT ARM. WELD ALL 4 EDGES OF THE TUBE TO THE SUPPORT ARM.

