



# FORWARD/REVERSE LEVER KIT

FORM NO. 46193(8-88)

PART NO. 46044

PRINTED IN USA  
\$1.00

## **SECTION 1**

### **INSTALLATION INSTRUCTIONS**

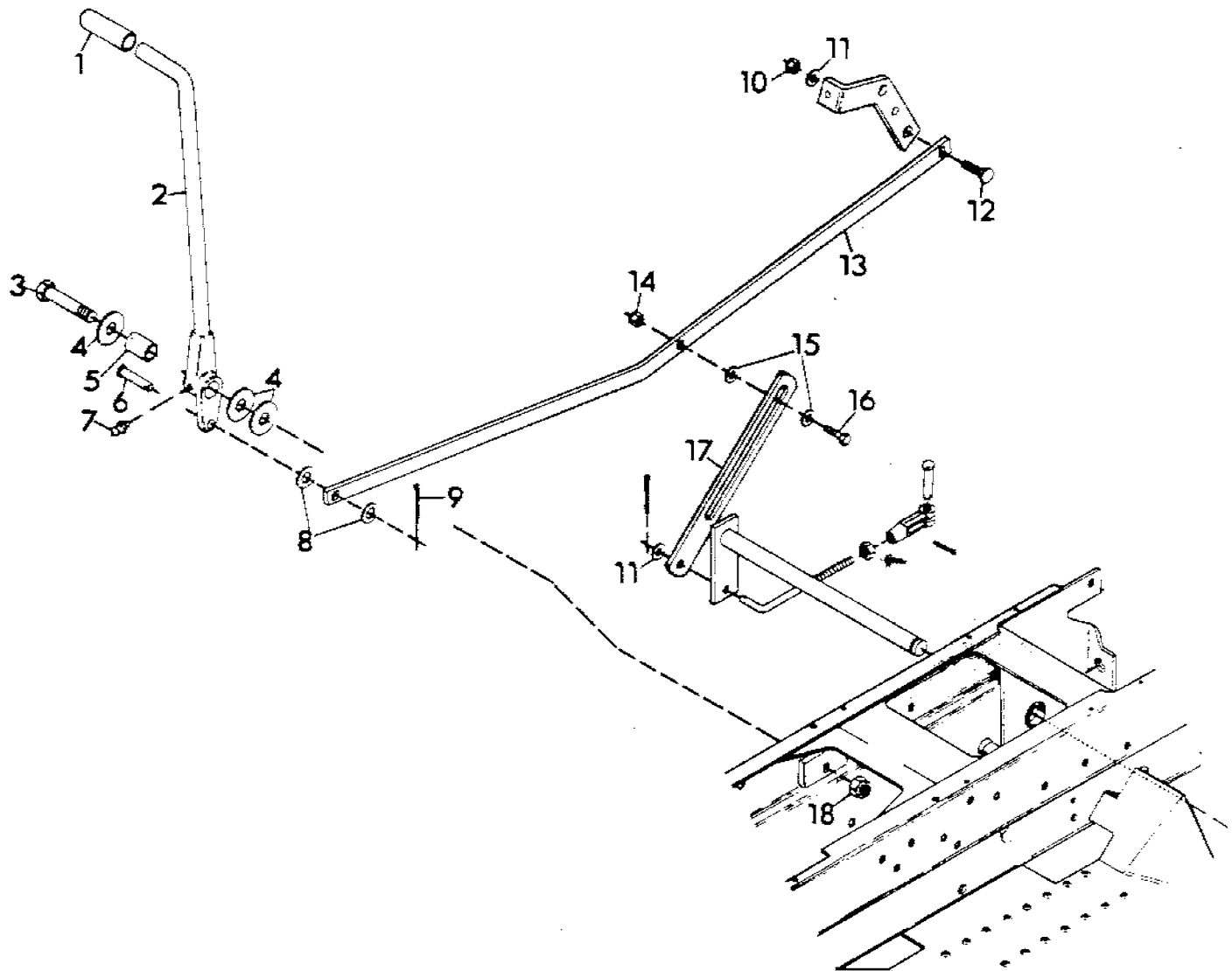
1. Check to see that the brakes are properly adjusted. See Section 4.12 in the Professional 4-Wheel Tractor (G-Series) Operator's Manual.
2. Remove the cotter pin and clevis pin that fastens the yoke to the foot clutch pedal. Remove the round head square neck bolt, lock washer and lock nut that fastens the forward-reverse shifter weldment, neutral detent strap and forward-reverse linkage bushing to the forward-reverse clutch roll arm and remove the shifter weldment.
3. Remove the hex bolts and lock nuts that fasten the clutch pedal pivot bracket to the footboard of the frame weldment. Remove the bracket and clutch pedal assembly.
4. Fasten the forward-reverse lever to the side of the frame weldment using the 1/2-13x2.75 hex bolt, three .563x1.375x.109 flat washers, bushing and 1/2-13 lock nut.

**NOTE:** For Steps 4 through 10, refer to the illustration in Section 2.

5. Fasten the forward-reverse shifter link, forward-reverse linkage bushing and neutral detent strap to the forward-reverse clutch roll arm with the 5/16-18x1.25 round head square neck bolt, .313x.875x.065 flat washer and 5/16-18 lock nut.
6. Put the clevis pin through the forward-reverse lever, a flat washer, the shifter link, a flat washer and retain with the .09x.75 cotter pin. Slide the handle grip onto the end of the lever.
7. Move the forward-reverse lever forward so that it locks in the "FORWARD" position.
8. Remove the cotter pin that fastens the parking brake rod to the brake cross shaft weldment. Fasten the end of the neutral return strap which has the hole to the parking brake rod with a .313x.875x.065 flat washer and the .09x.75 cotter pin which was removed.
9. Swing the neutral return strap up in front of the shifter link to mark the location to drill a .281 diameter hole in the shifter link. Position the strap so that the center of the end of the slot at the end of the strap is centered on the shifter link. Mark the location, lower the strap and drill the hole.
10. Swing the strap up behind the shifter link and retain with the 1/4-20x1.00 hex bolt, two .281x.625x.065 flat washers and 1/4-20 lock nut. Tighten the hardware so that the strap is allowed to rotate.
11. Check to see that the forward-reverse lever returns to "NEUTRAL" when the brake is applied. If it does not, re-adjust the brakes (See Section 4.12 in the tractor Operator's Manual.) until the lever returns to "NEUTRAL" when the brake is applied.

## SECTION 2

### ILLUSTRATED PARTS AND PARTS LIST



ITEM NO.	PART NO.	QTY.	DESCRIPTION	ITEM NO.	PART NO.	QTY.	DESCRIPTION
1	24452	1	Grip, Handle	10	419455	1	Nut, Lock 5/16-18
2	39832	1	Lever, Fwd-Rev	11	446354	2	Washer, Flat .313x.875x.065
3	180188	1	Bolt, Hex 1/2-13x2.75	12	120230	1	Bolt, 5/16-18x1.25 RdHdSqNk
4	120390	3	Washer, Flat .563x1.375x.109	13	39837	1	Link, Fwd-Rev Shifter
5	11074	1	Bushing, .505x.74x1.438	14	419454	1	Nut, Lock 1/4-20
6	138078	1	Pin, Clevis .375x.948	15	120392	2	Washer, Flat .281x.625x.065
7	411027	1	Fitting, Lube 1/4-28	16	180022	1	Bolt, Hex 1/4-20x1.00
8	120394	2	Washer, Flat .406x.812x.065	17	39867	1	Strap, Neutral Return
9	121222	1	Pin, Cotter .09x.75	18	414074	1	Nut, Lock 1/2-13