

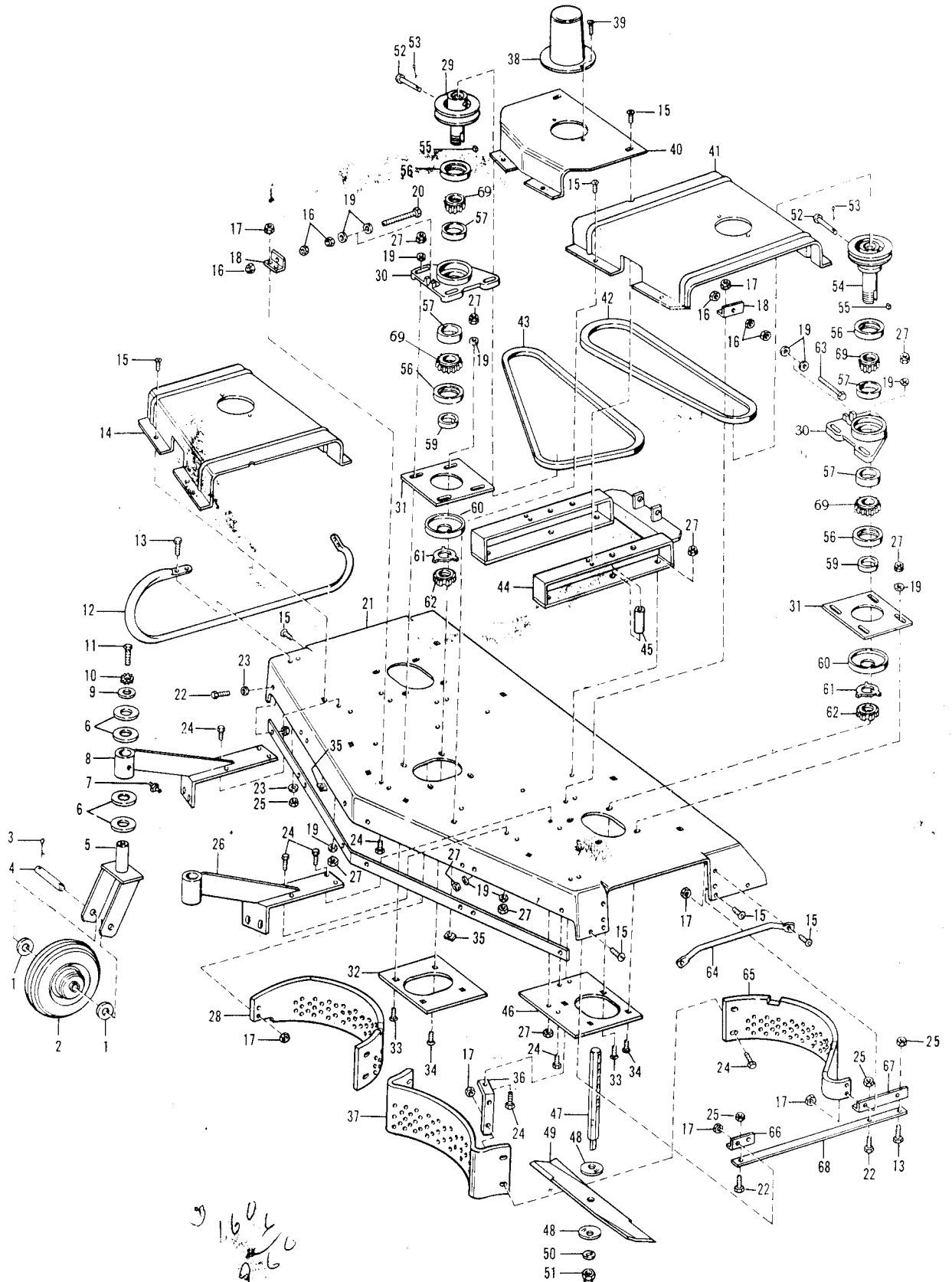
GRAVELY

50" ROTARY MOWER

Illustrated Parts & Price List

Effective Date: Sept. 1, 1962

Prices & Specifications Subject To Change Without Notice



Item No.	Part No.	Description	Price	Item No.	Part No.	Description	Price
1	W-12	Flat Washer	.05	35	TN-058	Nut-Tinnerman	.09
2	6561	Wheel	3.75	36	6550	Mulcher Mount Bracket	.35
3	603-C	Cotter Pin	.01	37	6553	Mulcher, Center	1.60
4	6562	Caster Axle	.70	38	6541	Spindle Cover	1.00
5	6563	Caster Fork	3.80	39	1566	Pan Head Self Tapping carriage bolt	.02
6	M5511	Flat Washer	.10	40	6543	Belt Guard, Center	1.60
7	901-G	Grease Fitting	.11	41	6542	Belt Guard, Left	2.45
8	6559	Caster Bracket Left	4.75	42	6566	V Belt	4.90
9	6053	Special Washer	.08	43	6565	V Belt	5.50
10	305W	Shakeproof Lockwasher	.01	44	6513	Drive Mount Bracket	6.90
11	121S	Hex. Hd. Cap Screw	.06	45	6514	Drive Mount Spacer	.20
12	6558	Skid	1.45	46	6507	Rt. & Lt. Spindle Support Plate	.60
13	114S	Hex. Head Cap Screw	.09	47	6522-A	Spindle Shaft, Hex.	1.90
14	6544	Belt Guard Right	2.45	48	6527	Upper & Lower Blade Washer	.15
15	ST506C	Truss Hd. Mach. Screw	.03	49	6528	Mower Blade	2.20
16	3509	Hex. Hd. Jam Nut	.03	50	M501	Thrust Washer	.09
17	NE05C	Elastic Stop Nut	.10	51	6529	Blade Retaining Nut	.08
18	6536	Special Adj. Bracket	.30	52	6523	Spindle Adj. Pin	.18
19	403W	Flat Washer	.01	53	602C	Cotter Pin	.01
20	M-547	Spindle Adj. Bolt	.10	54	6518	Left Spindle Sheave	5.50
21	6546	Deck	25.50	55	6525	Spindle Key	.06
22	115S	Hex. Hd. Cap Screw	.08	56	OS126	Oil Seal	1.16
23	402W	Flat Washer	.01	57	RB122-R	Roller Bearing	2.26
24	106S	Hex. Hd. Cap Screw	.06	59	6524	Spacer	.90
25	232N	Elastic Stop Nut	.13	60	6526	Oil Seal Dust Shield	.35
26	6560	Castor Bracket, Right	4.75	61	6533	Lock Washer Special	.75
27	NTU06C	Elastic Stop Nut	.13	62	6534	Lock Nut Special	.28
28	6552	Mulcher, Right	1.60	63	6T13-24C	Spindle Adj. Bolt	.14
29	6519	Center & Right Spindle Sheave	5.50	64	6554	Safety Bar	.35
30	6520	Spindle Housing	4.75	65	6551	Mulcher, Left	1.60
31	6517	Spindle Dust Shield	.40	66	6556	Roller Bar Bracket.	.30
32	6508	Front Spindle Support Plate	.60	67	6555	Roll Bar Bracket, Left Rear	.40
33	6CB10C	Square Neck Carriage Bolt	.05	68	6564	Discharge Support	.45
34	6CB07C	Square Neck Carriage Bolt	.05	69	RB-122-C	Roller Bearing Cone	1.16

GRAVELLY TRACTORS. DUNBAR, WEST VIRGINIA, U. S. A.

DIVISION STUDEBAKER CORPORATION

Printed in United States of America.