

LAWN SWEEPER
H90 AND K90
Parts Catalog No. A1321

3-81-OP-2000

This catalog replaces both catalogs
1321 and A1196. Please discard them.

ALPHABETICAL INDEX

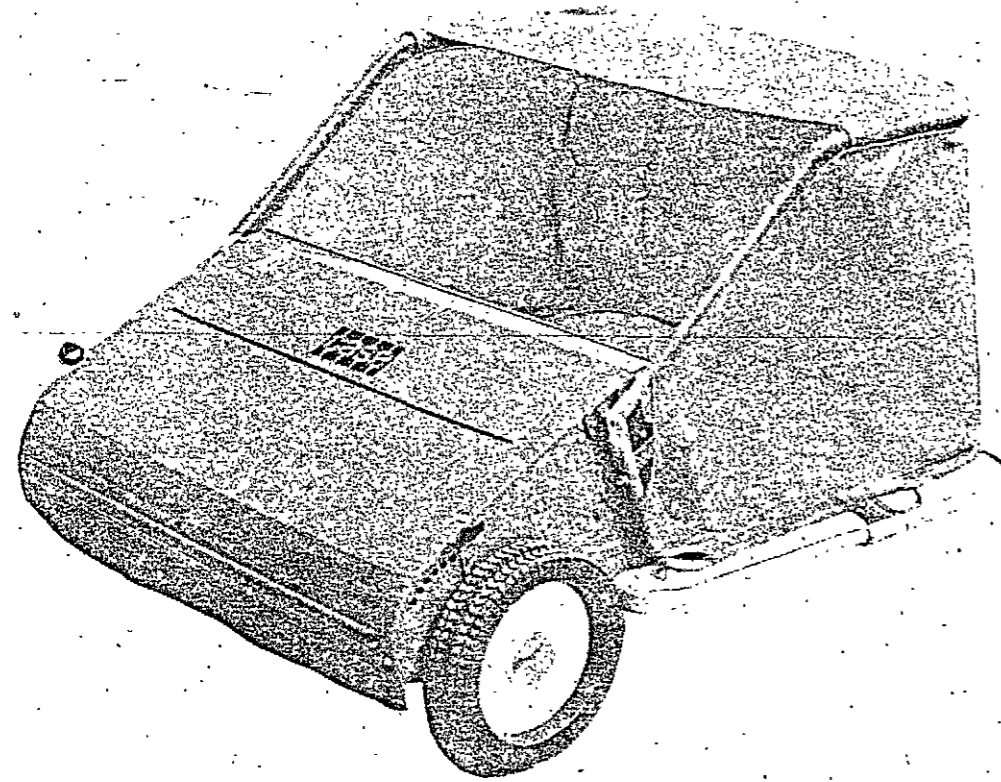
	PAGE	GRID
Belt	11	B10
Brush Drive	11	B10
Catcher Assembly	5	B4
Drawbar Assembly	7	B6
Housing-sweeper	7	B6
Impeller Drive	11	B10
Pulleys	11	B10
Wheels	9	B8

NOTE: See grid A2 for -
L90, M90, N90, P90, R90,
S90 Lawn Sweeper

NOTE: See grid C2 for -
J1, J2; K1, K2 Cabs

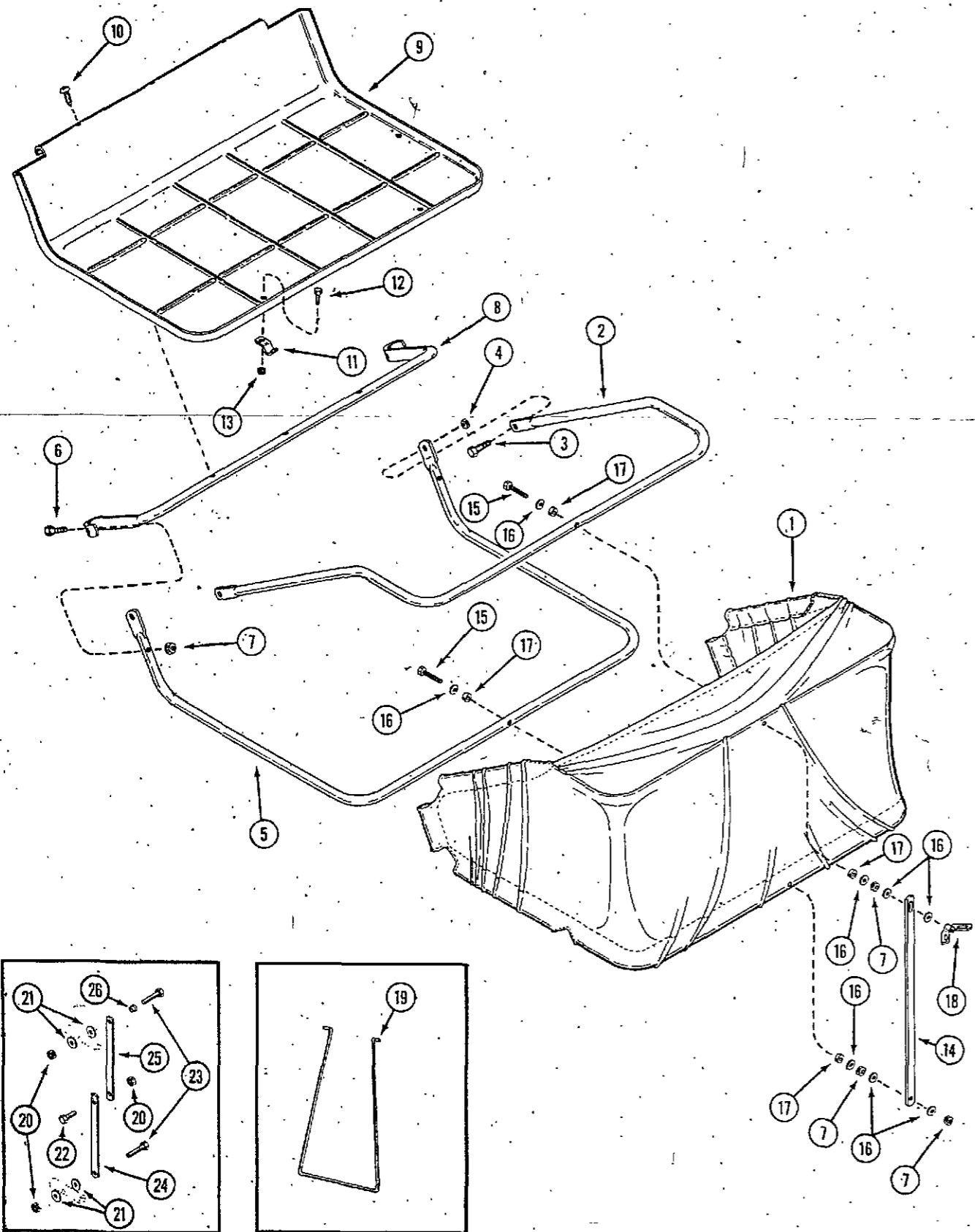
NOTE: See grid D2 for -
E60, F60, E62 Dump Carts
E65 Extensions

NOTE: See grid E2 for -
J31, K31, J32, K32, L32, J34, K34,
L34, K36 Wood Splitters



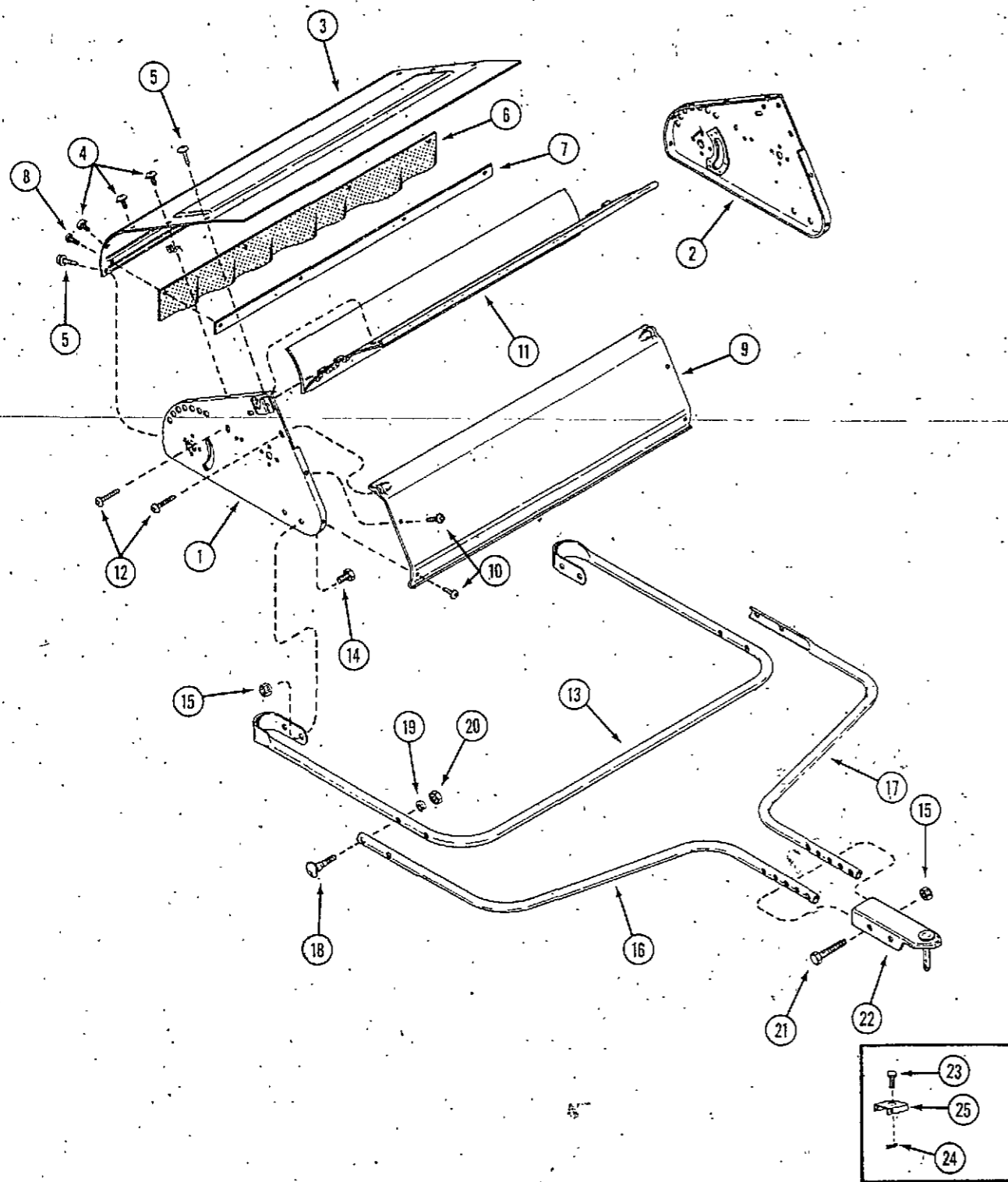
MODEL DESIGNATION	TRACTOR APPLICATION
H90 & K90	THE LAWN SWEEPER ATTACHES TO ALL CASE AS WELL AS COMPETITIVE COMPACT TRACTORS AND RIDING MOWERS WHICH ARE EQUIPPED WITH A TOW BAR.

CATCHER ASSEMBLY



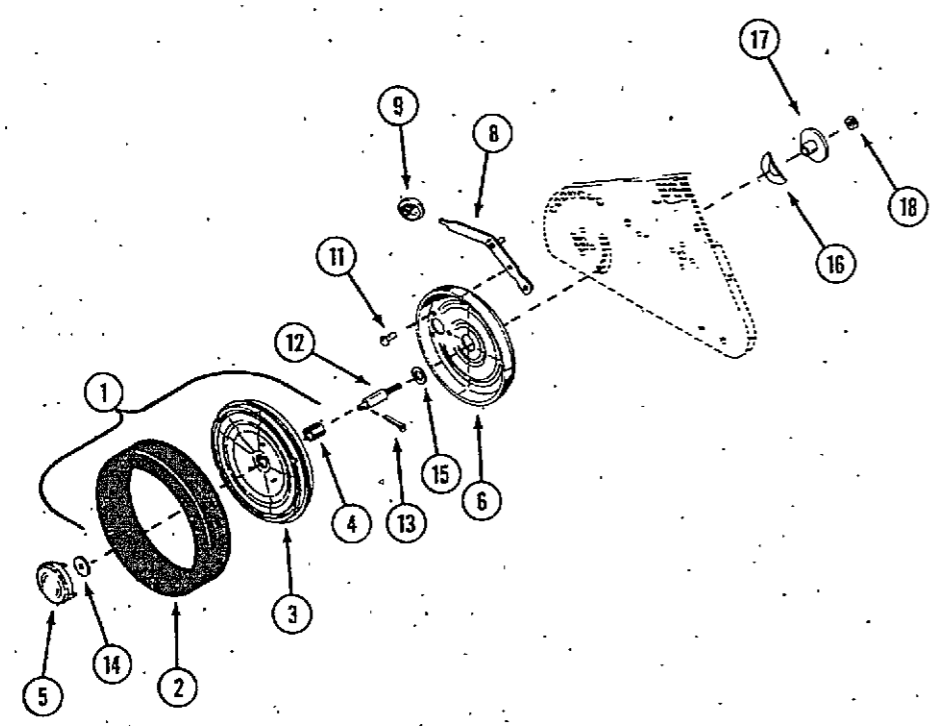
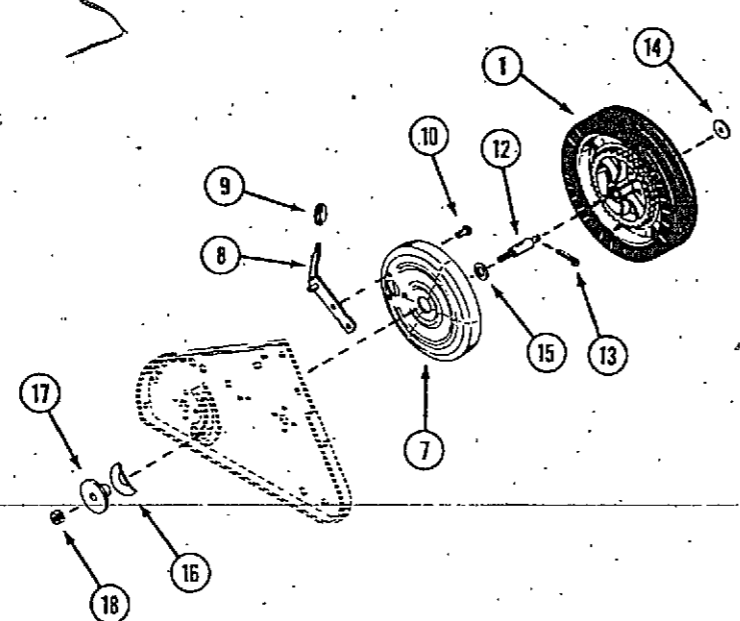
REF.	PART NO.	DESCRIPTION	REQ'D
1	C 21781	BASKET - fabric (K90)	1
1	C 17956	BASKET - fabric (H90)	1
2	C 17955	FRAME - upper	1
3	C 17957	BOLT - shoulder, basket pivot	2
4	131- 352	NUT - lock, 3/8" N.C. hex	2
5	C 17954	FRAME - lower	1
6	113- 17	BOLT - 1/4" x 1-1/8" N.C. hex	2
7	11- 1118	NUT - lock, 1/4" N.C. hex	5
8	C 17958	BRACE - frame	1
9	C 17959	PANEL - catcher bottom	1
10	182- 528	SCREW - #10 x 1/2" N.F. phillips	3
11	C 17960	CLAMP	4
12	163- 8	BOLT - #10 x 3/8" N.F. truss hd.	4
13	131- 525	NUT - lock #10 N.F. hex	4
14	C 21771	SUPPORT - basket (K90)	1
15	13- 428	BOLT - 1/4" x 1-3/4" hex (K90)	2
16	A 30171	WASHER - 17/64" x 1" (K90)	8
17	L 10610	WASHER - 21/64" x 1-1/4" x 1/8" nylon (K90)	4
18	C 21774	WINGNUT - lock, 1/4" N.C. (K90)	1
19	C 17961	SUPPORT - rear (early production) (H90)	1
20	131- 71	NUT - lock 1/4" - 20 hex (late production) (H90)	3
21	195- 102	WASHER - 5/16" (late production) (H90)	4
22	113- 1	BOLT - 1/4" x 1/2" (late production) (H90)	1
23	113- 5	BOLT - 1/4" x 1-1/2" (late production) (H90)	2
24	C 19887	SUPPORT - frame, lower (late production) (H90)	1
25	C 19886	SUPPORT - frame, upper (late production) (H90)	1
26	C 21525	BUSHING - (late production) (H90)	1

HOUSING AND DRAWBAR ASSEMBLY

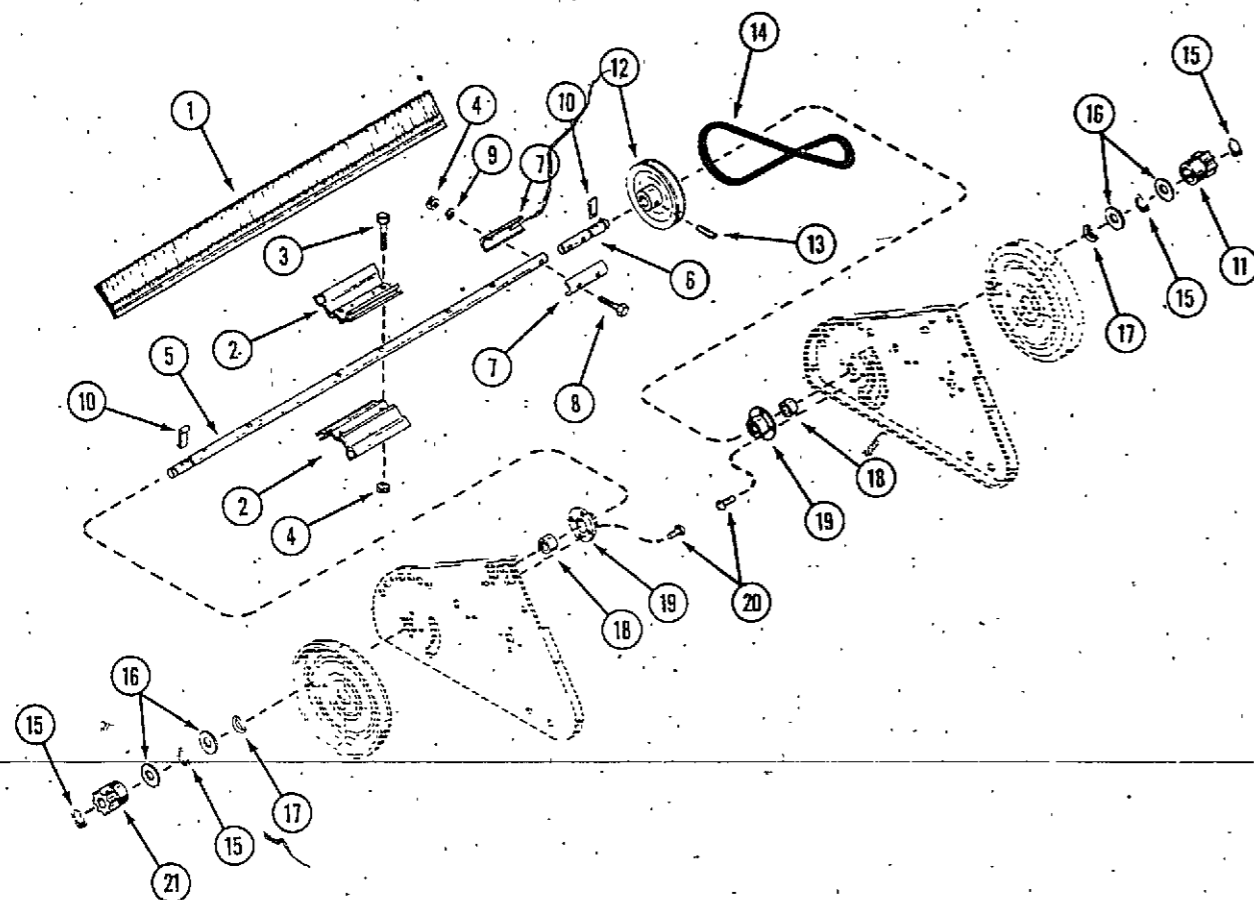


REF.	PART NO.	DESCRIPTION	REQ'D
1	C 17923	END PLATE ASSEMBLY - R.H.	1
2	C 17926	END PLATE ASSEMBLY - L.H.	1
3	C 17939	COVER - sweepgr	1
4	193- 524	SCREW - #10 x 3/8" N.F. sems	6
5	173- 240	SCREW - #10 x 5/8" N.F.	4
6	C 17967	SKIRT - sweeper, rubber	1
7	C 17966	RETAINER - skirt	1
8	173- 221	SCREW - #10 x 3/8" N.F. Phillips	4
9	C 17932	BAFFLE - front	1
10	193- 540	SCREW - 10 - 32 x 3/8" sems	4
11	C 17931	BAFFLE - top	1
12	193- 546	SCREW - 10 - 32 x 1-1/8" sems	6
13	C 21759	DRAWBAR - rear (K90)	1
13	C 17950	DRAWBAR - rear (H90)	1
14	193- 510	BOLT - 5/16" x 3/4" N.C. hex, sems	4
15	131- 351	NUT - lock 5/16" N.C. hex	6
16	C 21760	DRAWBAR - front, R.H. (K90)	1
16	C 17951	DRAWBAR - front, R.H. (H90)	1
17	C 17952	DRAWBAR - front, L.H. (H90)	1
17	C 21779	DRAWBAR - front, L.H. (K90)	1
18	C 17971	BOLT - 5/16" x 1-3/8", special	4
19	192- 19	LOCKWASHER - 1/4"	4
20	129- 102	NUT - 5/16" N.C. hex	4
21	13- 544	BOLT - 5/16" x 2-3/4" N.C. hex	2
22	C 21764	BRACKET - drawbar (K90)	1
23	C 17972	PIN - clevis (H90)	1
24	136- 159	PIN - hair (H90)	1
25	C 17953	BRACKET - drawbar (H90)	1
	321- 1571	DECAL - "CASE"	1
	C 21772	DECAL - Operator Tips	1

WHEEL AND DUST COVER ASSEMBLY



REF.	PART NO.	DESCRIPTION	REQ'D
1	C 17945	WHEEL ASSEMBLY - (includes tire)	2
2	C 17948	TIRE - rubber	2
3	C 21757	RIM - wheel (K90)	2
3	C 17946	RIM - wheel (H90)	2
4	C 17947	BUSHING - wheel	2
5	C 17949	CAP - hub	2
6	C 17933	COVER ASSEMBLY - dust R.H.	1
7	C 17936	COVER ASSEMBLY - dust L.H.	1
8	C 17934	LEVER - wheel adjust	2
9	C 17935	KNOB - lever, wheel adjust	2
10	45- 34	RIVET - 3/16" x 1/4" truss hd.	2
11	45- 35	RIVET - 3/16" x 5/16"	2
12	C 17937	AXLE - wheel	2
13	132- 333	PIN - cotter 1/8" x 5/8"	2
14	C 17969	WASHER - 3/8" x 7/8"	2
15	C 17975	WASHER - 25/32"	2
16	C 17968	WASHER - spring	2
17	C 17938	BUSHING - spacer	2
18	131- 94	NUT - lock, N.C. hex	2

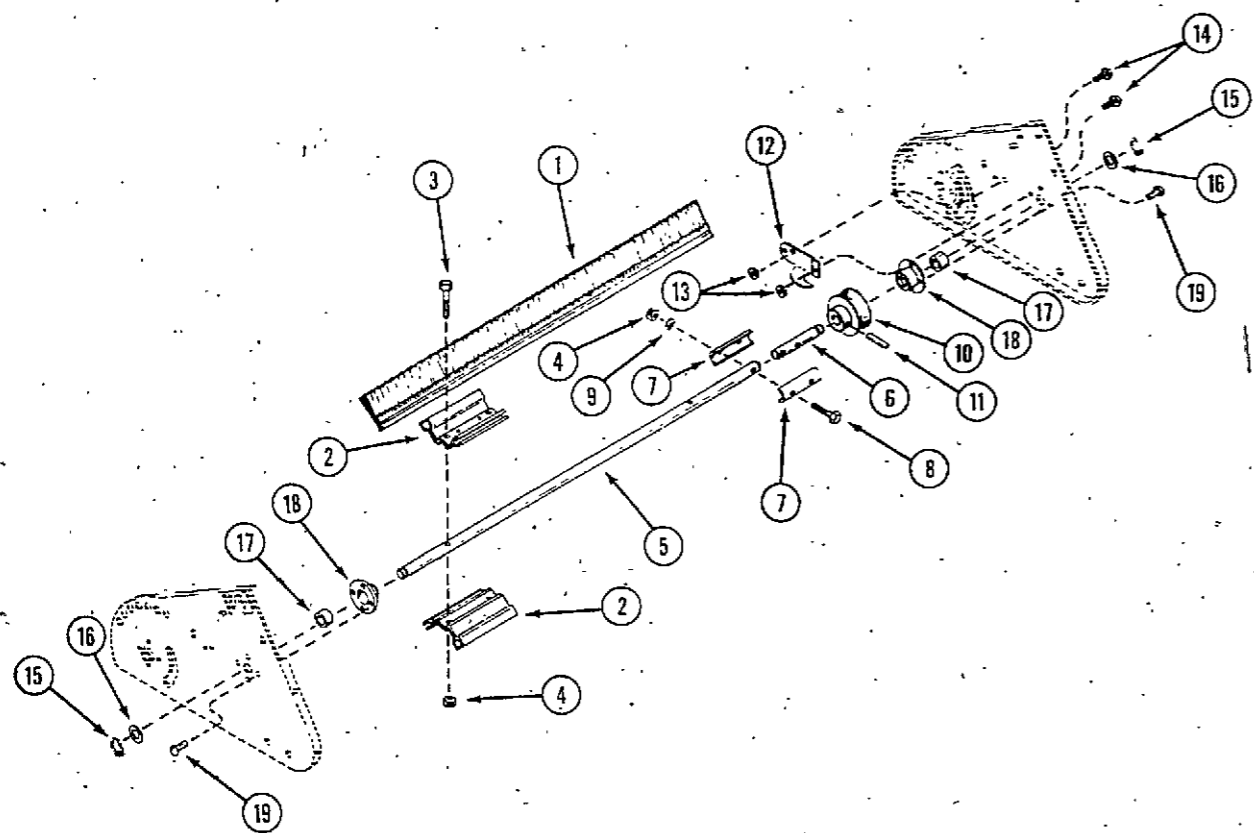


BRUSH DRIVE

REF.	PART NO.	DESCRIPTION	REQ'D
1	C 17940	BRUSH ASSEMBLY - (H90)	4
1	C 21911	BRUSH ASSEMBLY - (K90)	4
2	C 17941	RETAINER - brush	6
3	113- 17	BOLT - 1/4" x 1-1/8" N.C. hex	6
4	131- 1118	NUT - lock 1/4" N.C. hex	8
5	C 17929	SHAFT - brush (H90)	1
5	C 21756	SHAFT - brush, drive, long (K90)	1
6	C 21755	SHAFT - brush drive, short (K90)	1
7	C 21768	COUPLING - shaft (K90)	2
8	13- 420	BOLT - 1/4" x 1-1/4" hex (K90)	2
9	92- 4	LOCK WASHER - 1/4" (K90)	2
10	C 17942	PAWL - brush drive	2
11	C 17944	PINION - L.H.	1
12	C 17927	PULLEY - impeller drive, large	1
13	138- 79	PIN - roll 5/32" x 1-1/4"	1
14	C 17965	BELT - 3/8" round section	1
15	F 21293	RING - retaining	4
16	C 21782	WASHER - 19/32" x 1-1/8" (K90)	2
16	C 17974	WASHER - 5/8" (H90)	2
17	C 21763	WASHER - spring (K90)	2
18	C 17924	BEARING - shaft	2
19	C 17925	RETAINER - bearing	2
20	45- 35	RIVET - 3/16" x 5/16"	8
21	C 17943	PINION - R.H.	1

IMPELLER DRIVE

1	C 17940	BRUSH ASSEMBLY - (H90)	4
1	C 21911	BRUSH ASSEMBLY - (K90)	4
2	C 17941	RETAINER - brush	4
3	113- 17	BOLT - 1/4" x 1-1/2" N.C. hex hd.	2
4	131- 1118	NUT - lock 1/4" N.C. hex	4
5	C 21770	SHAFT - impeller, long (K90)	1
5	C 17930	SHAFT - impeller (H90)	1
6	C 21769	SHAFT - impeller, short (K90)	1
7	C 21768	COUPLING - shaft (K90)	2
8	13- 420	BOLT - 1/4" x 1-1/4" hex hd. (K90)	2
9	92- 4	LOCKWASHER - 1/4" (K90)	2
10	C 17928	PULLEY - impeller, drive, small	1
11	138- 79	PIN - roll 5/32" x 1-1/4"	1
12	C 17964	SCRAPER - impeller pulley	1
13	131- 525	NUT - lock #10 N.F. hex	2
14	175- 295	BOLT - #10 - 32 x 3/8" truss hd., phillips.	2
15	F 21293	RING - retaining	2
16	195- 2026	WASHER - 5/8" x 15/16"	2
17	C 17924	BEARING - shaft	2
18	C 17925	RETAINER - bearing	2
19	45- 35	RIVET - 3/16" x 5/16"	7



NUMERICAL INDEX

PART NO.	PAGE NO.	REF. NO.	PART NO.	PAGE NO.	REF. NO.		
A	30171	5	16	C	21763	11	17
C	17923	7	1	C	21764	7	22
C	17924	11	17	C	21768	11	7
C	17924	11	18	C	21769	11	6
C	17925	11	18	C	21770	11	5
C	17925	11	19	C	21771	5	14
C	17926	7	2	C	21772	7	
C	17927	11	12	C	21774	5	18
C	17928	11	10	C	21779	7	17
C	17929	11	5	C	21781	5	1
C	17930	11	5	C	21782	11	16
C	17931	7	11	C	21911	11	1
C	17932	7	9	F	21293	11	15
C	17933	9	6	F	21293	11	15
C	17934	9	8	L	10610	5	17
C	17935	9	9				
C	17936	9	7				
C	17937	9	12				
C	17938	9	17				
C	17939	7	3				
C	17940	11	1				
C	17941	11	2				
C	17942	11	10				
C	17943	11	21				
C	17944	11	11				
C	17945	9	1				
C	17946	9	3				
C	17947	9	4				
C	17948	9	2				
C	17949	9	5				
C	17950	7	13				
C	17951	7	16				
C	17952	7	17				
C	17953	7	25				
C	17954	5	5				
C	17955	5	2				
C	17956	5	1				
C	17957	5	3				
C	17958	5	8				
C	17959	5	9				
C	17960	5	11				
C	17961	5	19				
C	17964	11	12				
C	17965	11	14				
C	17966	7	7				
C	17967	7	6				
C	17968	9	16				
C	17969	9	14				
C	17971	7	18				
C	17972	7	23				
C	17974	11	16				
C	17975	9	15				
C	19886	5	25				
C	19887	5	24				
C	21525	5	26				
C	21755	11	6				
C	21756	11	5				
C	21757	9	3				
C	21759	7	13				
C	21760	7	16				

HARDWARE CODE NUMBERS

11-	1118	5	7
13-	420	11	8
13-	428	5	19
13-	544	7	21
45-	34	9	10
45-	35	9	11
45-	35	11	19
45-	35	11	20
92-	4	11	9
129-	102	7	20
113-	1	5	22
113-	5	5	23
113-	17	5	6
113-	17	11	3
131-	94	9	18
131-	71	5	20
131-	351	7	15
131-	352	5	4
131-	525	5	13
131-	525	11	13
131-	1118	11	4
132-	333	9	13
136-	159	7	24
138-	79	11	11
138-	79	11	13
163-	8	5	12
173-	21	7	8
173-	240	7	5
175-	295	11	14
182-	528	5	10
192-	19	7	19
193-	510	7	14
193-	524	7	4
193-	540	7	10
193-	546	7	12
195-	102	5	21
195-	2026	11	16
321-	1571	7	

INGERSOLL
Ingersoll Equipment Co., Inc.